

SENATE BILL 339
RESEARCH FOR DESIGN RECOMMENDATIONS

California Transportation Commission

REVENUE COLLECTION PROCESS

DEVELOPMENT OF RECOMMENDATIONS

Commission staff met with the California Department of Tax and Fee Administration

Commission staff met with the State Controller's Office

Commission staff reviewed prior revenue collection aspects of the 2017 pilot

Commission staff met with Caltrans

CURRENT
REVENUE
COLLECTION
VERSUS
PILOT
REVENUE
COLLECTION

**The California
Department of
Tax and Fee
Administration
collects payment
from fuel
distributors**

versus

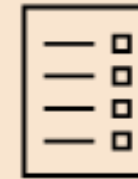
**An Account
Manager collects
payment from
individuals or
fleets**

Current Process



An oil terminal is an industrial facility for the storage of fuel.

CDTFA collects excise taxes on fuel as it leaves the terminal, before it gets to the retail fueling station



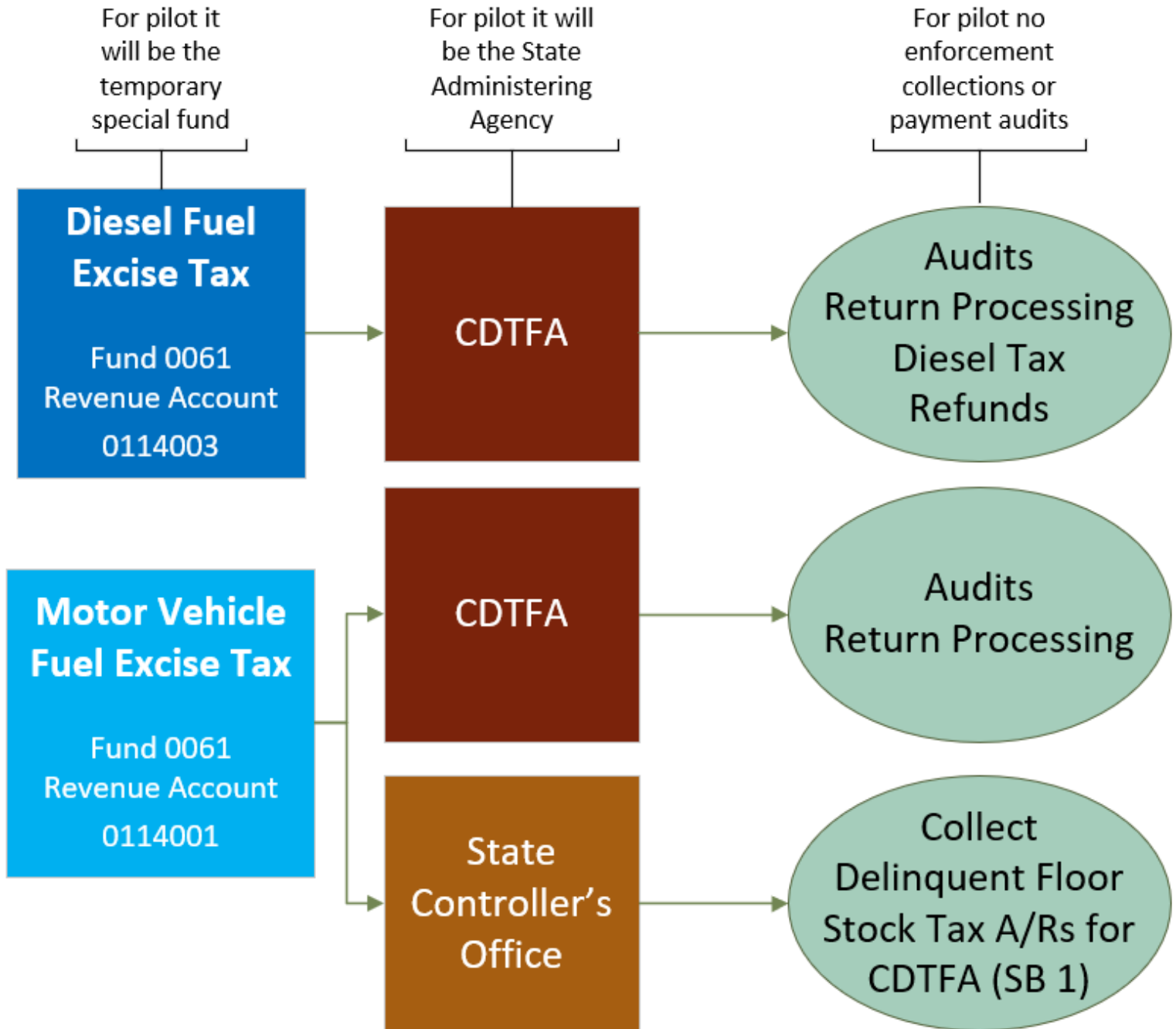
There are significant penalties for late payments

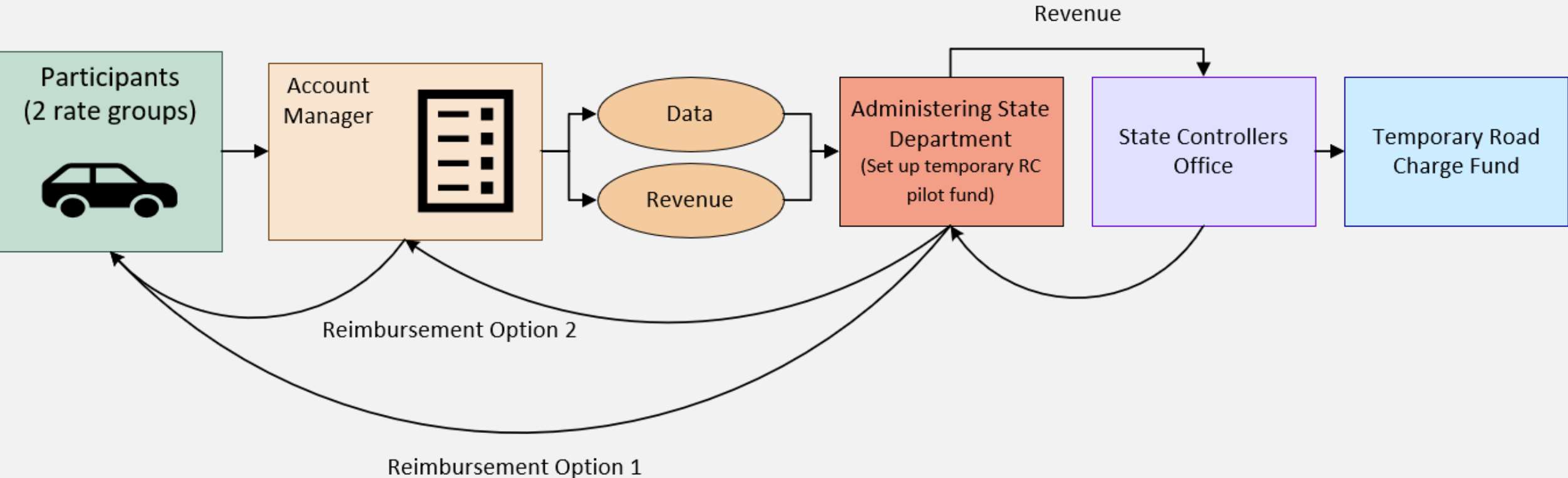
Suppliers report tax information monthly to CDTFA & make monthly payments.



Sales tax is calculated based on gas sales and paid by station owners

**CURRENT
PROCESS -
ADMINISTRATION**



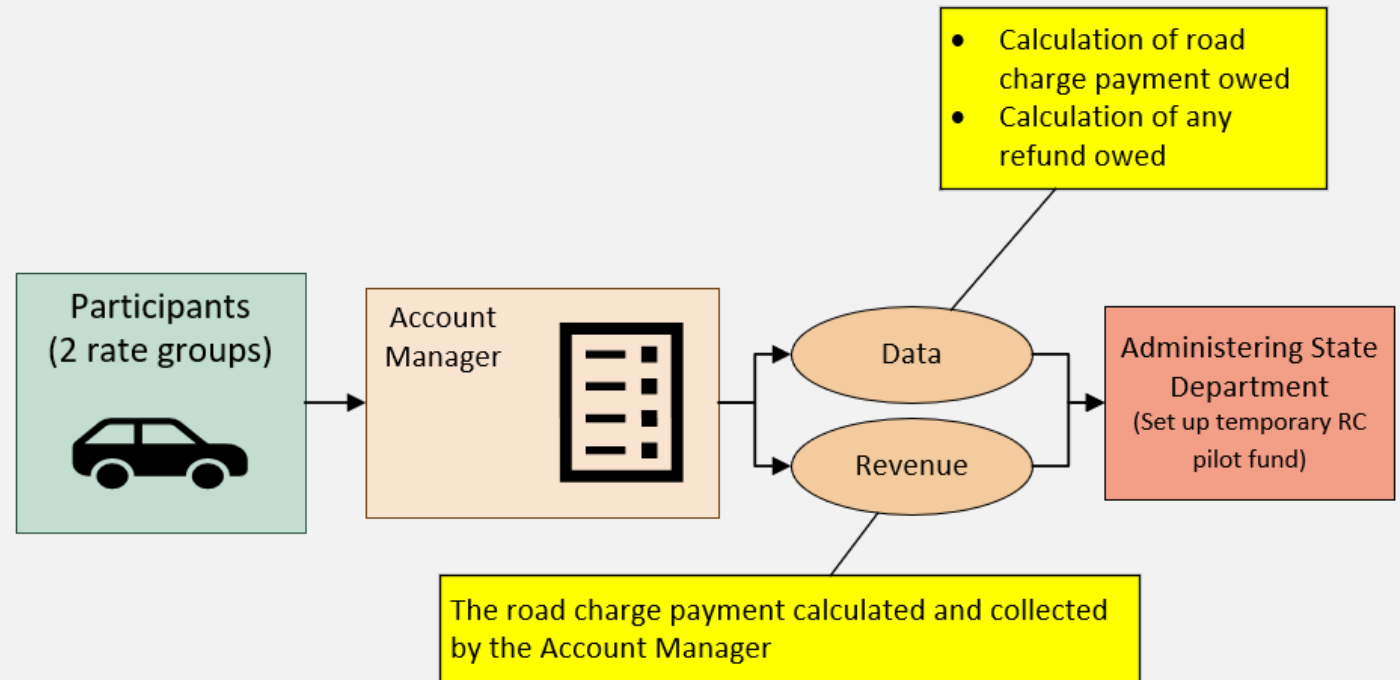


DRAFT ROAD CHARGE PILOT REVENUE COLLECTION & REIMBURSEMENT PROCESS

FEE/REFUND CALCULATION & INITIAL FEE COLLECTION

Based on lessons learned from the 2017 pilot, the Account Manager is responsible to:

- Calculate the revenue owed
- Calculate any refund owed
- Collect the revenue from the participants

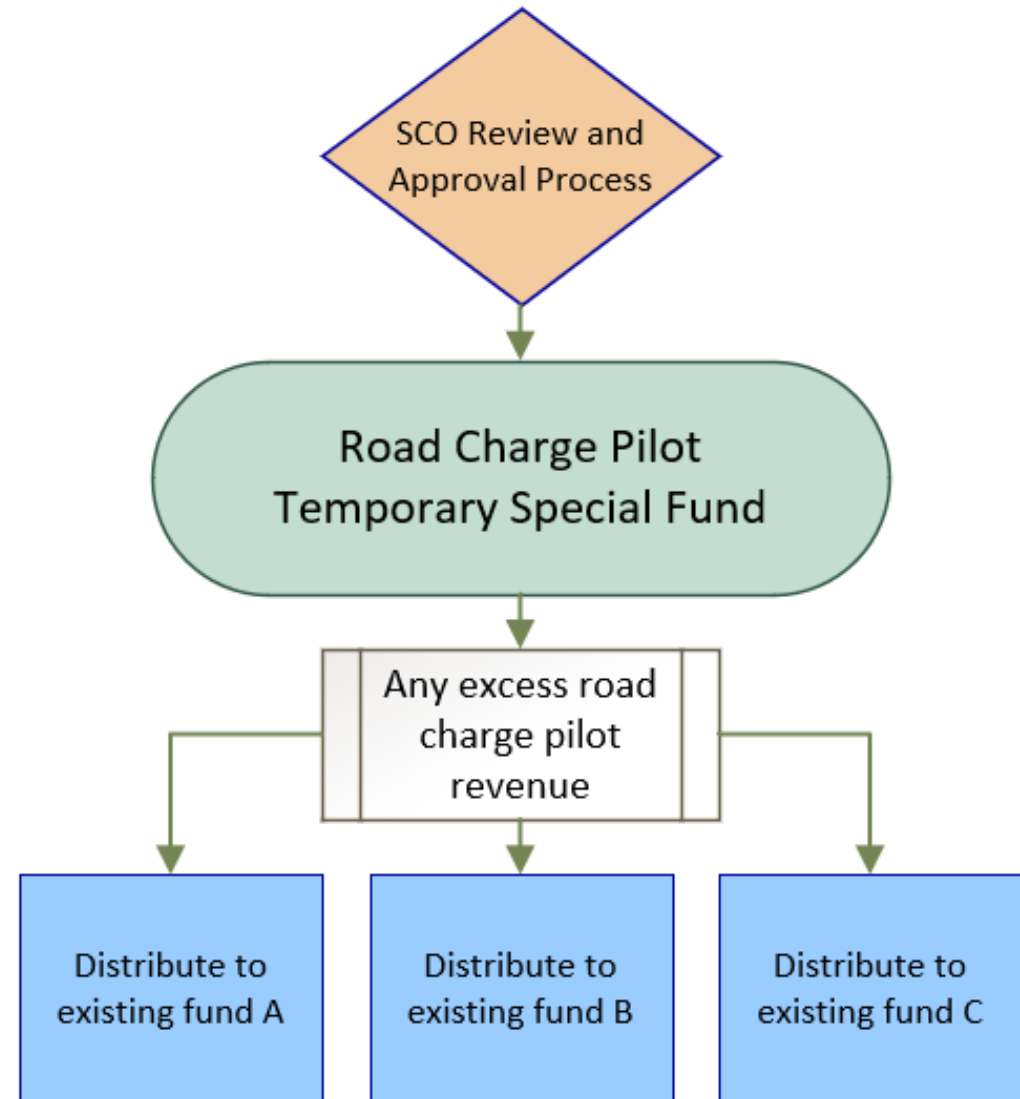


DECISION
POINTS FOR
THE ROAD
CHARGE TAC

Decision	Staff Recommendation
How long will funds be collected?	Possibly around 6 months – not too long, but long enough to work out issues.
How often will funds be collected?	Monthly seems to be the usual timeframe.
Who should be the state administering agency?	The TAC may want to consider recommending the DMV or another state agency.
Should refunds go from the Administering State Department to the Account Manager or directly to participants?	It would be less work for the Administering State Department to have the Account Manager distribute refunds.

REVENUE DISTRIBUTION

If the road charge pilot ends up collecting more revenue in total from participants than what is refunded back to participants, the Administering State Department will need to work with the State Controller's Office to set up a distribution of the revenues from the temporary special fund to other existing program funds.



QUESTIONS?