

MEMORANDUM

To: CHAIR AND COMMISSIONERS
CALIFORNIA TRANSPORTATION COMMISSION

CTC Meeting: June 24-25, 2020

From: STEVEN KECK, Chief Financial Officer

Reference Number: 2.3c., Action Item

Prepared By: Janice Benton, Chief
Division of Design

Subject: RELINQUISHMENT RESOLUTIONS

ISSUE:

Should the California Transportation Commission (Commission) approve the California Department of Transportation's (Department) request for relinquishment resolutions that will transfer highway facilities no longer needed for the State Highway System to the local agencies identified in the summary?

RECOMMENDATION:

The Department recommends that the Commission approve the relinquishment resolutions, summarized below, that will transfer highway facilities no longer needed for the State Highway System to the local agencies identified in the summary. It has been determined that each facility in the specific relinquishment resolution summarized below may be disposed of by relinquishment. Upon the recording of the approved relinquishment resolutions in the county where the facilities are located, all rights, title, and interest of the State in and to the facilities to be relinquished will be transferred to the local agencies identified in the summary. The facilities are safe and drivable. The local authorities have been advised of the pending relinquishments a minimum of 90 days before the Commission meeting pursuant to Section 73 of the Streets and Highways Code. Any exceptions or unusual circumstances are described in the individual summaries.

RESOLUTIONS:

Resolution R-4042 – 01-Men-101-PM 46.36/47.53
(Request No. 1249) – 1 Segment

Relinquishes right of way on the superseded portion of Route 101 (Main Street), from State Route 20 to the north City limits, to the City of Willits under the terms and conditions as stated in the relinquishment agreement dated January 25, 2012. The 90-day notice was received by

*“Provide a safe, sustainable, integrated and efficient transportation system
to enhance California’s economy and livability”*

the City of Willits on February 18, 2020, and the 90-day period expired on May 18, 2020. The City, by Resolution No. 2020-21 dated May 13, 2020, agreed to accept title upon relinquishment by the State. See Attachment 1 for the relinquishment location.

Resolution R-4044 – 04-CC-680-PM 13.6
(Request No. 56144) – 1 Segment

Relinquishes right of way, consisting of collateral facilities, in the County of Contra Costa along Route 680 at Circle Drive. The County Board of Supervisors agreed to accept the relinquishment and waive the 90-day notice on April 9, 2020. See Attachment 2 for the relinquishment location.

Resolution R-4046 – 06-Tul-99-PM 40.3/41.0
(Request No. 87929) – 8 Segments

Relinquishes right of way, consisting of collateral facilities, in the County of Tulare in the vicinity of Route 99 and Betty Drive under the terms and conditions as stated in the relinquishment agreement dated August 13, 2013. The County, by resolution No.2020-0241 dated May 12, 2020, agreed to waive the 90-day notice requirement and accept title upon relinquishment by the State. See Attachment 3 for the relinquishment location.

Resolution R-4047 – 06-Ker-155-PM R1.46
(Request No. 87931) – 1 Segment

Relinquishes right of way, consisting of collateral facilities, in the City of Delano, Kern County, along Route 155 and Browning Road. The City agreed to waive the 90-day notice and accept title upon relinquishment by the State under the terms and conditions as stated in the relinquishment agreement dated October 16, 2019. See Attachment 4 for the relinquishment location.

Resolution R-4048 – 08-SBd-58-PM R22.64/R30.53
(Request No. 497-S) – 16 Segments

Relinquishes right of way, consisting of collateral and superseded facilities, in the County of San Bernardino along Route 58 near Hinkley under the terms and conditions as stated in the relinquishment agreement dated April 22, 2014. The County Board of Supervisors by resolution No. 2020-25 agreed to accept the relinquishment and waive the 90-day notice on March 24, 2020. See Attachment 5 for the relinquishment location.

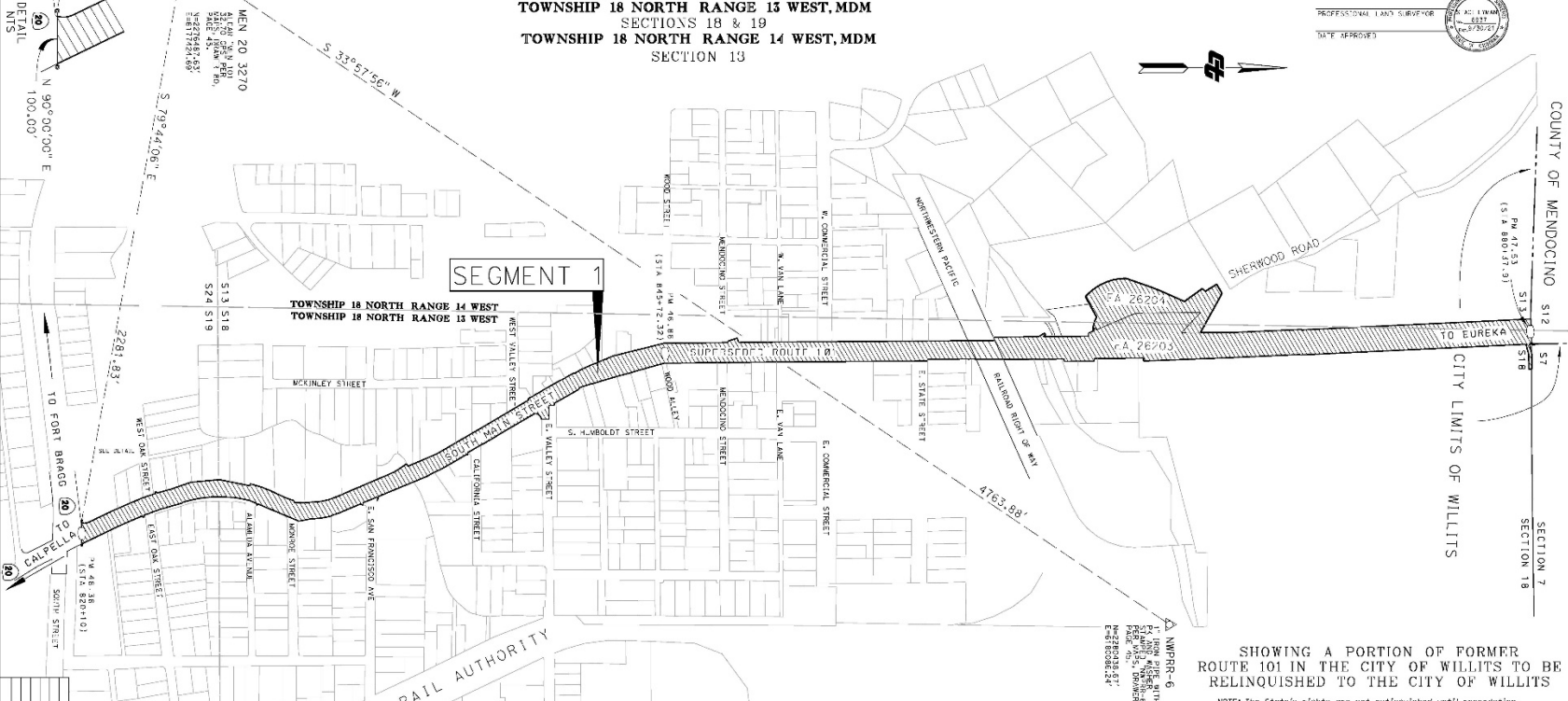
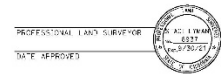
Attachments:

Attachments 1, 2, 3, 4, and 5 – Relinquishment Location Maps

FOR STATE HIGHWAY MAP BOOK

RELINQUISHMENT 1249
CITY OF WILLITS
COUNTY OF MENDOCINO
TOWNSHIP 18 NORTH RANGE 13 WEST, MDM
SECTIONS 18 & 19
TOWNSHIP 18 NORTH RANGE 14 WEST, MDM
SECTION 13

NOTE: The State of California or its officers or agents shall not be responsible for the accuracy or completeness of digital images of this map.



SEGMENT 1

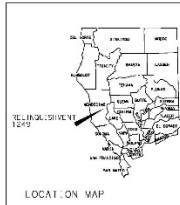
TOWNSHIP 18 NORTH RANGE 14 WEST
 TOWNSHIP 18 NORTH RANGE 13 WEST

SHOWING A PORTION OF FORMER ROUTE 101 IN THE CITY OF WILLITS TO BE RELINQUISHED TO THE CITY OF WILLITS

NOTE: The State's rights are not extinguished until rescission of related California Transportation Commission resolution.

DATE PROJECT SUBMITTED	1/10/2020
DATE REVISED	
DATE REVISION MADE	
DATE	
DATE	
DATE	

FILED IN BOOK _____ HIGHWAY MAPS, PAGE _____
 ON _____, 2020.
 SEE CTC RESOLUTION NUMBER _____ RECORDED ON _____,
 _____, 2020, AS _____, OFFICIAL RECORDS, MCR.



NOTES
 Coordinates and bearings are in NAD 83 (1983) Zone 10, and elevations are in feet unless otherwise noted.
 All distances are in feet unless otherwise noted.

LEGEND

	Relinquishment
	Right of Way
	Easement
	Other

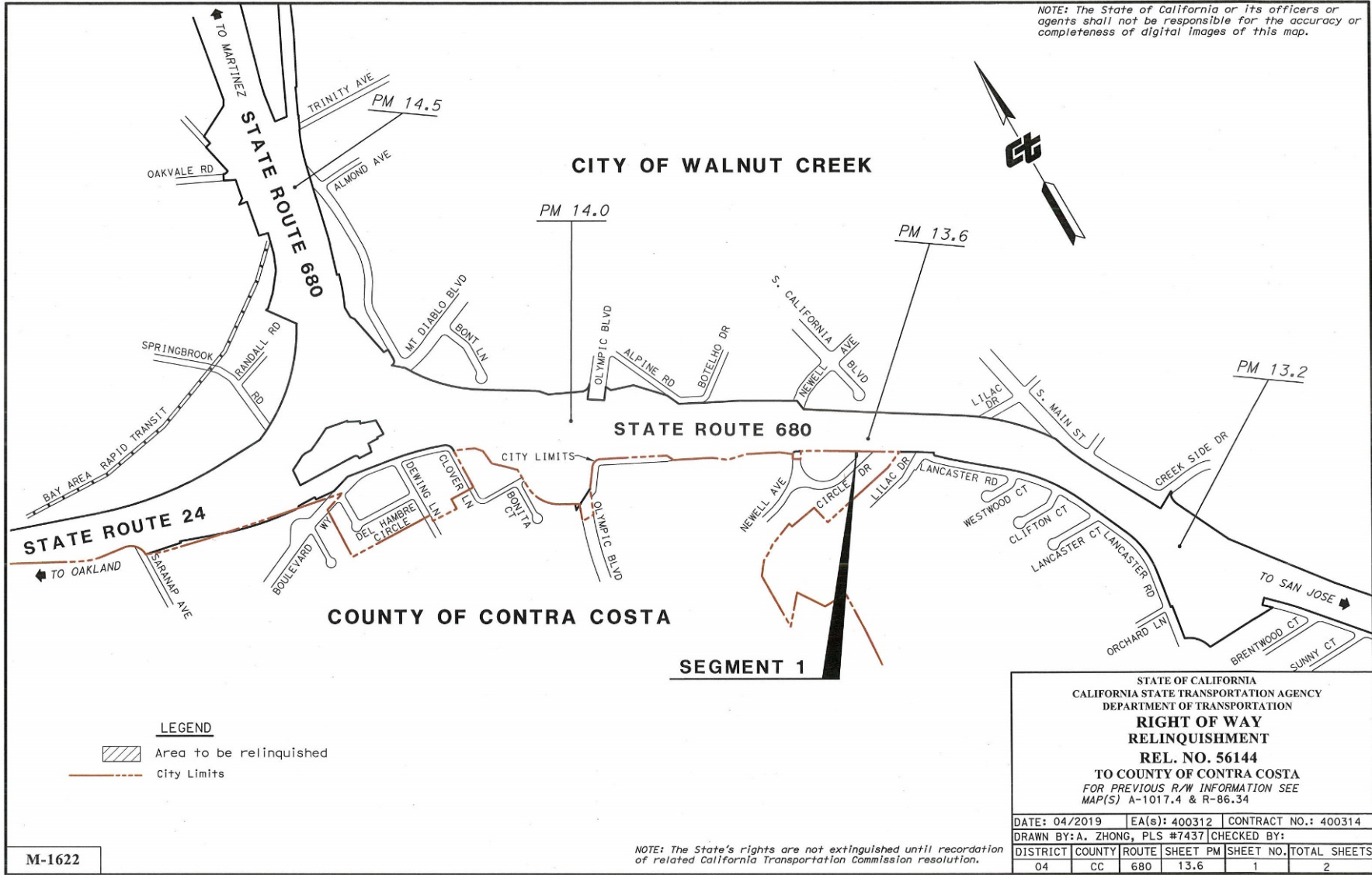
STATE OF CALIFORNIA
 CALIFORNIA STATE TRANSPORTATION AGENCY
 DEPARTMENT OF TRANSPORTATION
RIGHT OF WAY RELINQUISHMENT MAP
MAP NO. 1249

FOR PREVIOUS R/W INFORMATION SEE MAPS 141 THRU 146, 145A

TO DESIGN:	N/A	EAs: 26203/26204	FAM:
DISTRICT	MCN	ROUTE	101
		PM	48.36/47.53
		SHEET NO.	1
		TOTAL SHEETS	1

PROJECT ID: 01 1200 0204
 01 1200 0204

NOTE: The State of California or its officers or agents shall not be responsible for the accuracy or completeness of digital images of this map.



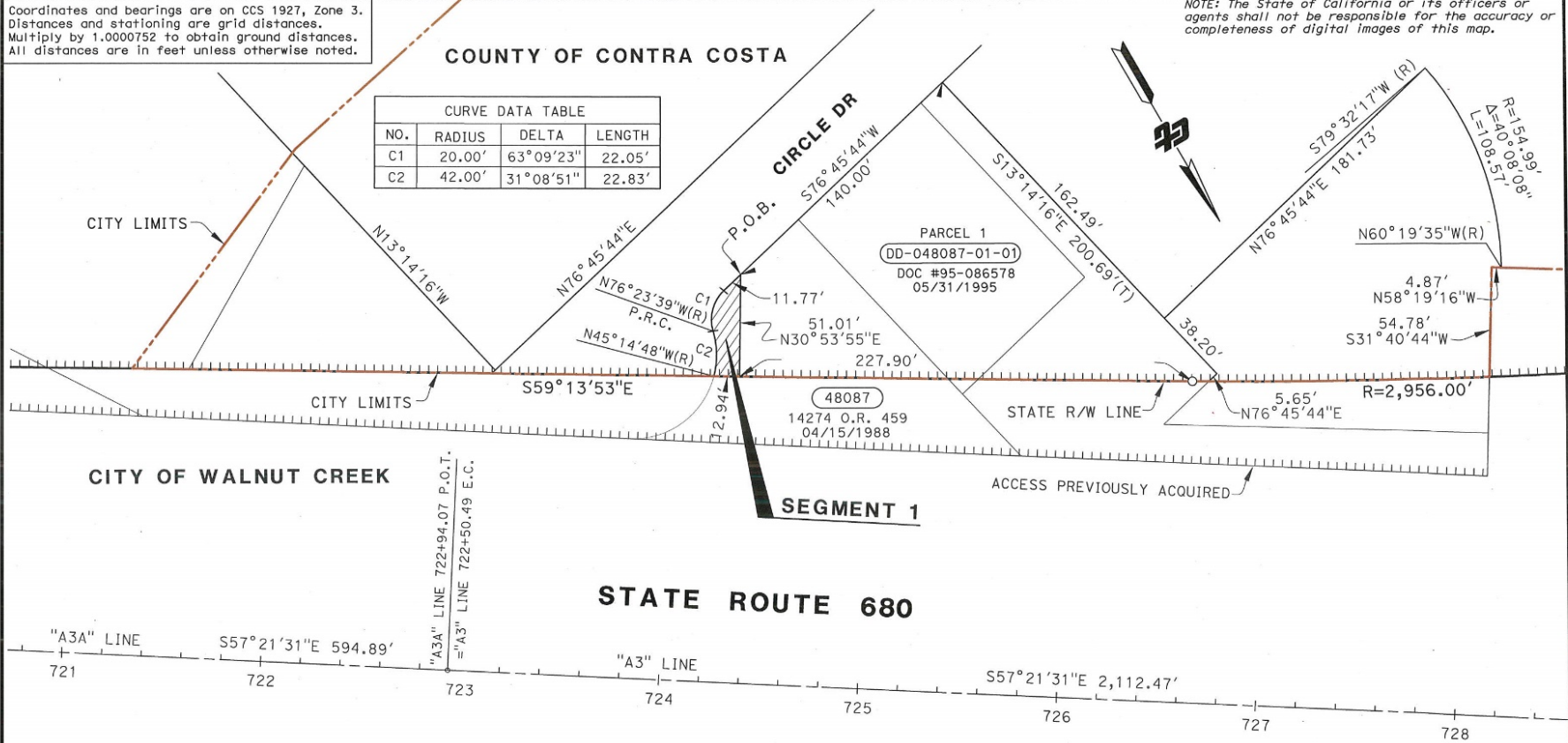
M-1622

Coordinates and bearings are on CCS 1927, Zone 3. Distances and stationing are grid distances. Multiply by 1.0000752 to obtain ground distances. All distances are in feet unless otherwise noted.

COUNTY OF CONTRA COSTA

CURVE DATA TABLE			
NO.	RADIUS	DELTA	LENGTH
C1	20.00'	63°09'23"	22.05'
C2	42.00'	31°08'51"	22.83'

NOTE: The State of California or its officers or agents shall not be responsible for the accuracy or completeness of digital images of this map.

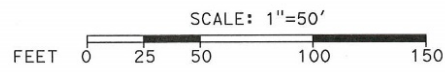


CITY OF WALNUT CREEK

STATE ROUTE 680

LEGEND

- Access Prohibited
- City Limits
- P.O.B. Point of Beginning
- (R) Indicates Radial Bearing
- o Indicates calculated point. (Does not imply monument set)
- Area to be relinquished



STATE OF CALIFORNIA
CALIFORNIA STATE TRANSPORTATION AGENCY
DEPARTMENT OF TRANSPORTATION
**RIGHT OF WAY
RELINQUISHMENT**
REL. NO. 56144
TO COUNTY OF CONTRA COSTA
FOR PREVIOUS R/W INFORMATION SEE
MAP(S) A-1017.4 & R-86.34

DATE: 04/2019	EA(S): 400312	CONTRACT NO.: 400314			
DRAWN BY: A. ZHONG, PLS #7437		CHECKED BY:			
DISTRICT	COUNTY	ROUTE	SHEET PM	SHEET NO.	TOTAL SHEETS
04	CC	680	13.6	2	2

M-1622

NOTE: The State's rights are not extinguished until recordation of related California Transportation Commission resolution.

PROJECT ID: 0416000263

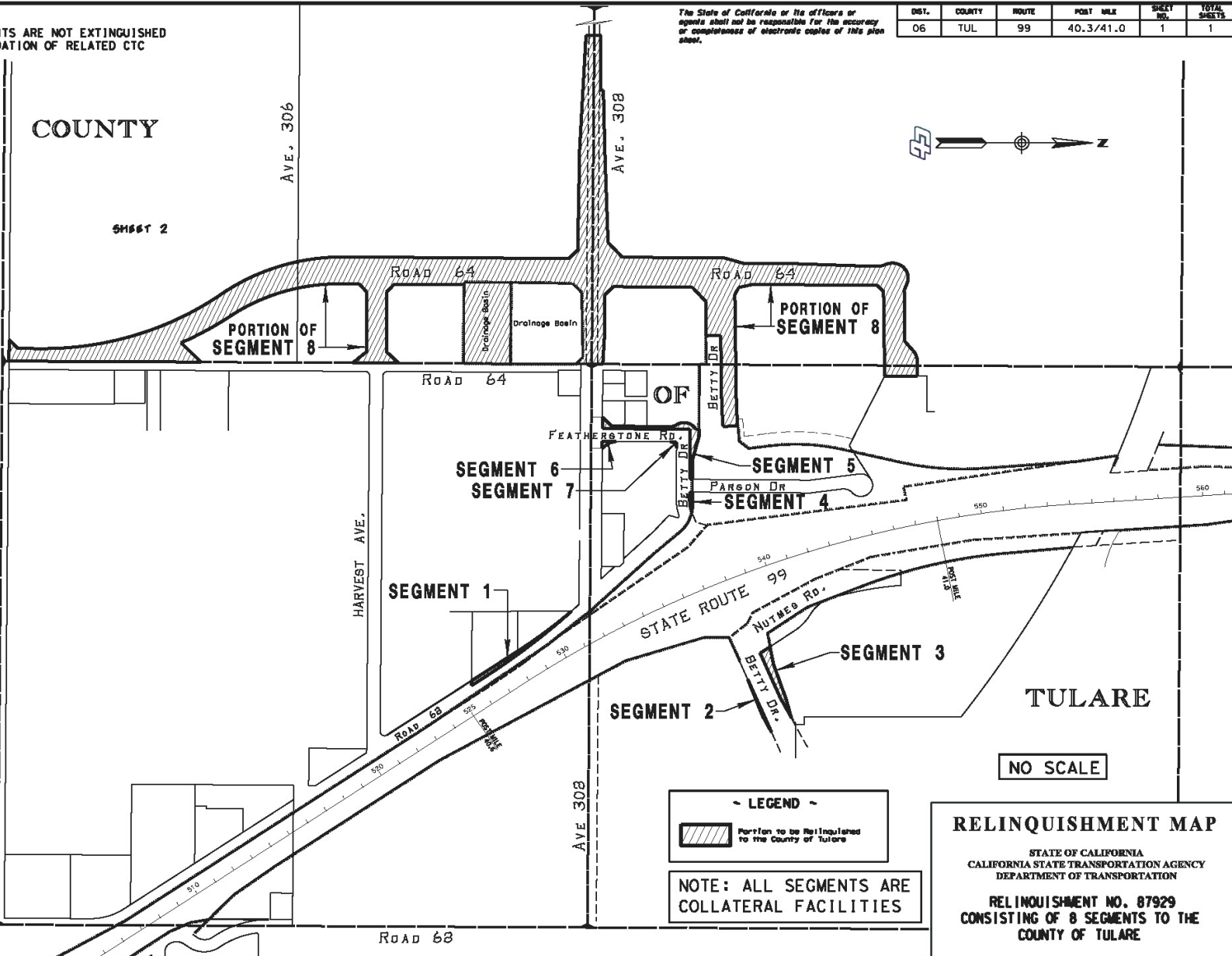
NOTE:
STATE'S RIGHTS ARE NOT EXTINGUISHED
UNTIL RECORDATION OF RELATED CTC
RESOLUTION.

The State of California or its officers or
agents shall not be responsible for the accuracy
or completeness of electronic copies of this plan
sheet.

DIST.	COUNTY	ROUTE	POST MILE	SHEET NO.	TOTAL SHEETS
06	TUL	99	40.3/41.0	1	1

COUNTY

SHEET 2



LEGEND

Portion to be Relinquished to the County of Tulare

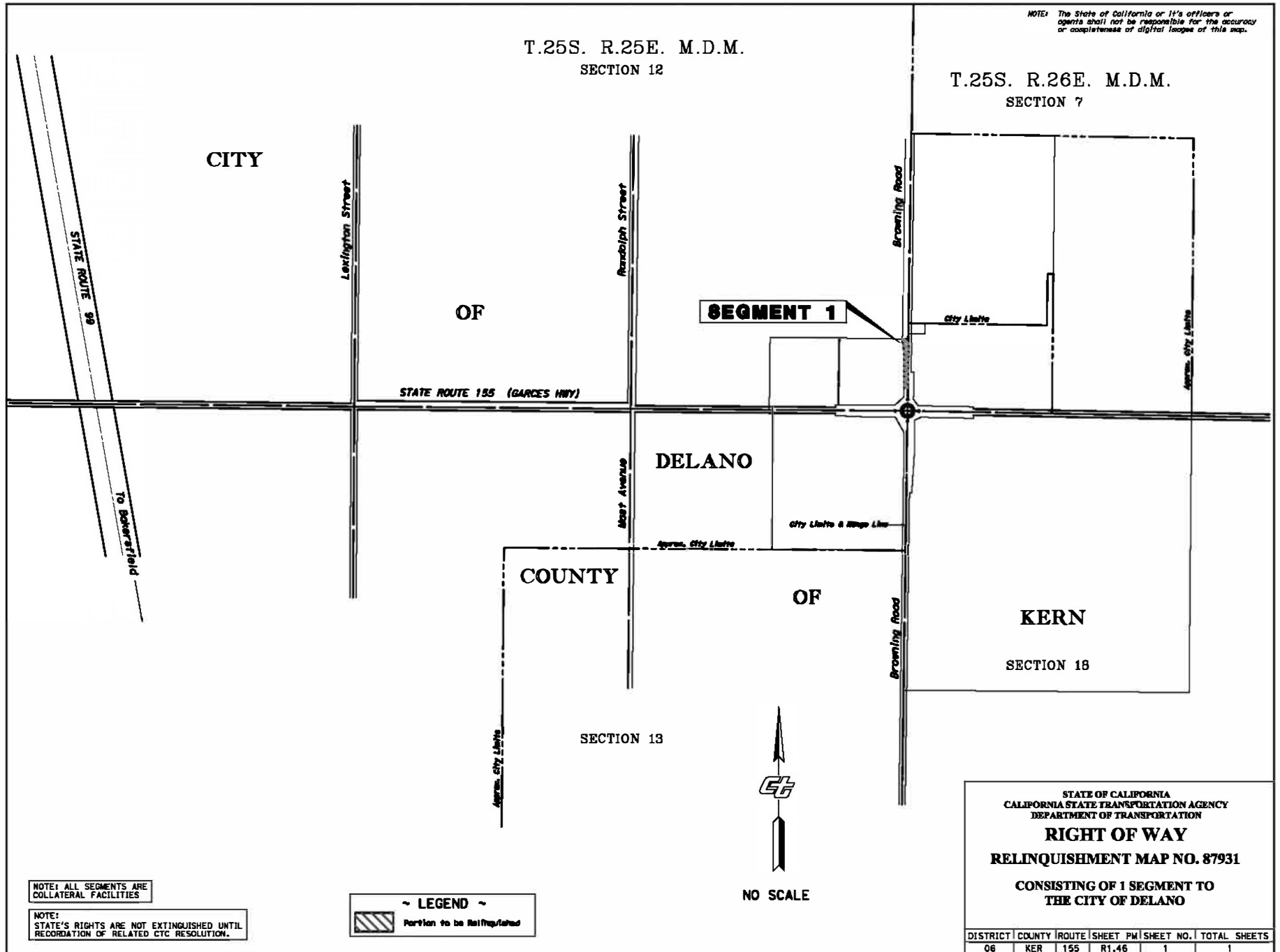
NOTE: ALL SEGMENTS ARE
COLLATERAL FACILITIES

NO SCALE

RELINQUISHMENT MAP

STATE OF CALIFORNIA
CALIFORNIA STATE TRANSPORTATION AGENCY
DEPARTMENT OF TRANSPORTATION

RELINQUISHMENT NO. 87929
CONSISTING OF 8 SEGMENTS TO THE
COUNTY OF TULARE



STATE OF CALIFORNIA
CALIFORNIA STATE TRANSPORTATION AGENCY
DEPARTMENT OF TRANSPORTATION

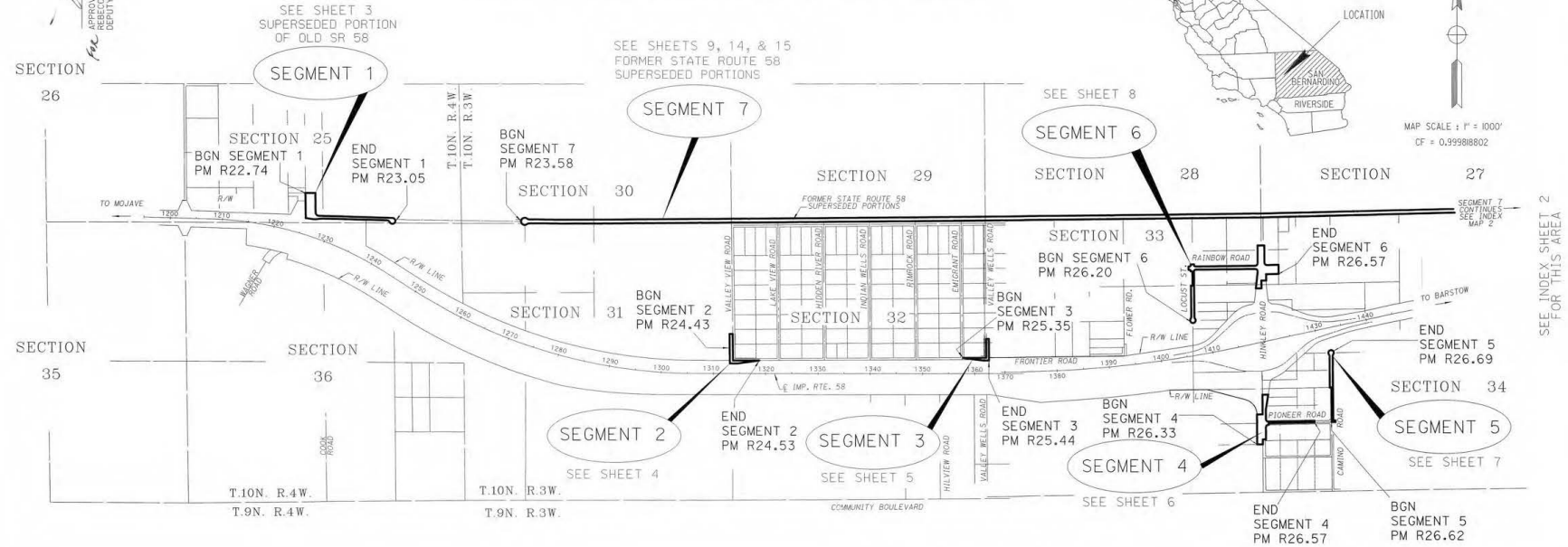
PROPOSED RELINQUISHMENT OF STATE ROUTE 58 SUPERSEDED
HIGHWAY TOGETHER WITH STATE ROUTE 58 COLLATERAL FACILITIES
IN THE COUNTY OF SAN BERNARDINO WITHIN
SECTIONS 31 & 32, TOWNSHIP 10 NORTH, RANGE 2 WEST, SBM
SECTIONS 25 - 36, TOWNSHIP 10 NORTH, RANGE 3 WEST, SBM
SECTIONS 25 & 36, TOWNSHIP 10 NORTH, RANGE 4 WEST, SBM

DIST.	COUNTY	ROUTE	POST MILE	SHEET	TOTAL
08	SBd	58	R23.58/R30.53	1	16

LICENSED LAND SURVEYOR
THOMAS J. DATMAN
 Exp. 9-30-2020
 No. 6833
 DATE APPROVED
 4-20-20



MAP SCALE: 1" = 1000'
CF = 0.99988802



SAN BERNARDINO COUNTY RECORDER'S CERTIFICATE

THIS MAP HAS BEEN FILED UNDER DOCUMENT NUMBER **DOC NO 2020-0138259**
 THIS **22nd** DAY OF **APRIL**, 20**20**, AT **9:00 AM**, IN
 BOOK **18** OF STATE HIGHWAY MAPS AT PAGE (S) **48 to 63**, AT
 THE REQUEST OF STATE OF CALIFORNIA, DEPARTMENT OF TRANSPORTATION
 IN THE AMOUNT OF \$ **0.00**

BOB DUTTON
 ASSESSOR-RECORDER
 COUNTY OF SAN BERNARDINO
 BY: **CONFORMED**
 DEPUTY RECORDER

FREE RECORDING: THIS INSTRUMENT IS FOR THE BENEFIT OF THE STATE
 OF CALIFORNIA AND IS ENTITLED TO BE RECORDED WITHOUT FEE
 (GOVT CODE 6103)

STATE OF CALIFORNIA
 CALIFORNIA STATE TRANSPORTATION AGENCY
 DEPARTMENT OF TRANSPORTATION

**INDEX MAP OF
 PROPOSED
 RELINQUISHMENT 497-S
 TO THE COUNTY OF
 SAN BERNARDINO**

MAP SCALE: 1" = 1000'

FEET 0 1000 2000 3000

1. ADDITIONAL INFORMATION MAY BE OBTAINED FROM THE
 DISTRICT OFFICE, RIGHT OF WAY ENGINEERING BRANCH AT
 454 N. FOURTH STREET, SAN BERNARDINO, CA, SPACE
 2. STATE RIGHTS ARE NOT EXTINGUISHED UNTIL RECORDATION
 OF THE RELATED CTC RESOLUTION OF RELINQUISHMENT

COORDINATES AND BEARINGS ARE ON CCS83 (1992-88) ZONE 5.
 DISTANCES AND STATIONING ARE GRID DISTANCES. DIVIDE
 GRID DISTANCES BY THE COMBINATION FACTOR (CF) TO OBTAIN
 GROUND DISTANCES. CF=0.999888

□ SEGMENT TO BE RELINQUISHED

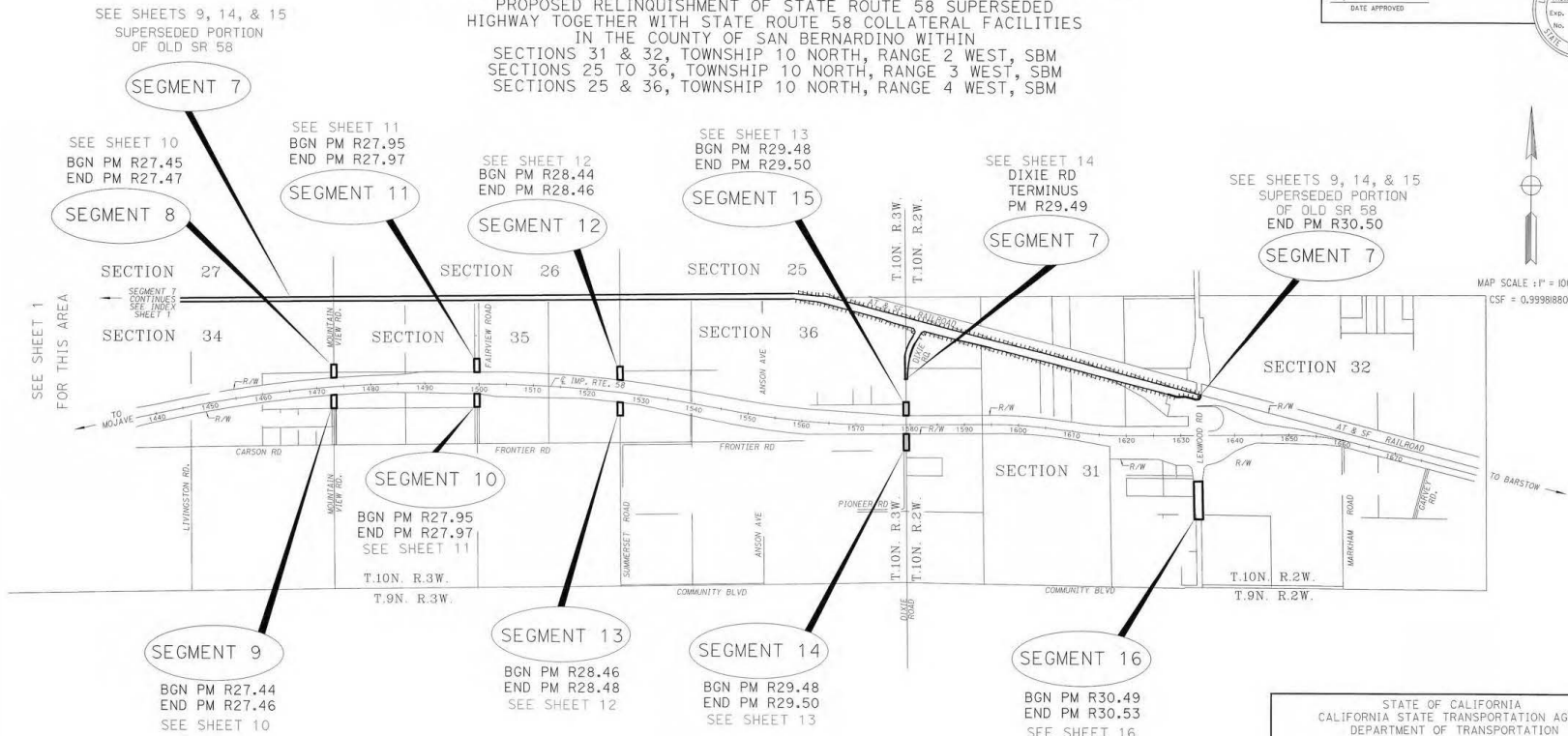
STATE OF CALIFORNIA
CALIFORNIA STATE TRANSPORTATION AGENCY
DEPARTMENT OF TRANSPORTATION

DIST.	COUNTY	ROUTE	POST MILE	SHEET	TOTAL
08	Sbd	58	R23.58/R30.53	2	16


 LICENSED LAND SURVEYOR
 No. 420-20
 DATE APPROVED


 THOMAS J. DATTMAN
 No. 420-20
 STATE OF CALIFORNIA

PROPOSED RELINQUISHMENT OF STATE ROUTE 58 SUPERSEDED HIGHWAY TOGETHER WITH STATE ROUTE 58 COLLATERAL FACILITIES IN THE COUNTY OF SAN BERNARDINO WITHIN SECTIONS 31 & 32, TOWNSHIP 10 NORTH, RANGE 2 WEST, SBM SECTIONS 25 TO 36, TOWNSHIP 10 NORTH, RANGE 3 WEST, SBM SECTIONS 25 & 36, TOWNSHIP 10 NORTH, RANGE 4 WEST, SBM



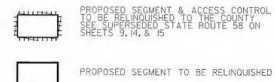
STATE OF CALIFORNIA
CALIFORNIA STATE TRANSPORTATION AGENCY
DEPARTMENT OF TRANSPORTATION

**INDEX MAP OF
PROPOSED
RELINQUISHMENT 497-S
TO THE COUNTY OF
SAN BERNARDINO**

MAP SCALE: 1" = 1000'

FEET 0 1000 2000 3000

1. ADDITIONAL INFORMATION MAY BE OBTAINED FROM THE DISTRICT OFFICE, BIGHT OF WAY ENGINEERING BRANCH AT 464 W. FOURTH STREET, SAN BERNARDINO, CA 92401.
2. STATE RIGHTS ARE NOT PATRONSHEED UNTIL RECORDED OF THE RELATED CTC RESOLUTION OF RELINQUISHMENT.



COORDINATES AND BEARINGS ARE ON CCS83 (N92.88) ZONE 5. DISTANCES AND STATIONING ARE GRID DISTANCES. GRID DISTANCES BY THE COMBINATION FACTOR (CF) TO OBTAIN GROUND DISTANCES. CF=0.9998889