

EQUITY MATTERS: CREATING A SAFE, EQUITABLE AND INCLUSIVE TRANSPORTATION SYSTEM FOR ALL



Charles T. Brown, MPA, CPD, LCI
California Transportation Commission Meeting
Wednesday, June 24, 2020
10:00 am – 10:30 am PST

EQUITY

- Equity involves trying to understand and give **people** what they need to enjoy full, healthy lives.
- Equity is the presence of justice and fairness within the procedures, processes, and distribution of resources by institutions or systems.
- Facing equity issues requires an understanding of the underlying or root causes of inequalities and oppression within our society.



CONSIDERATION OF SOCIAL IDENTITIES

- Which identities do you think about most often?
- Which identities do you think about least often?
- Which of your own identities would like to learn more about?
- Which of your identities have the strongest effect on how you perceive yourself?
- Which of your identities have the greatest effect on how others perceive you?



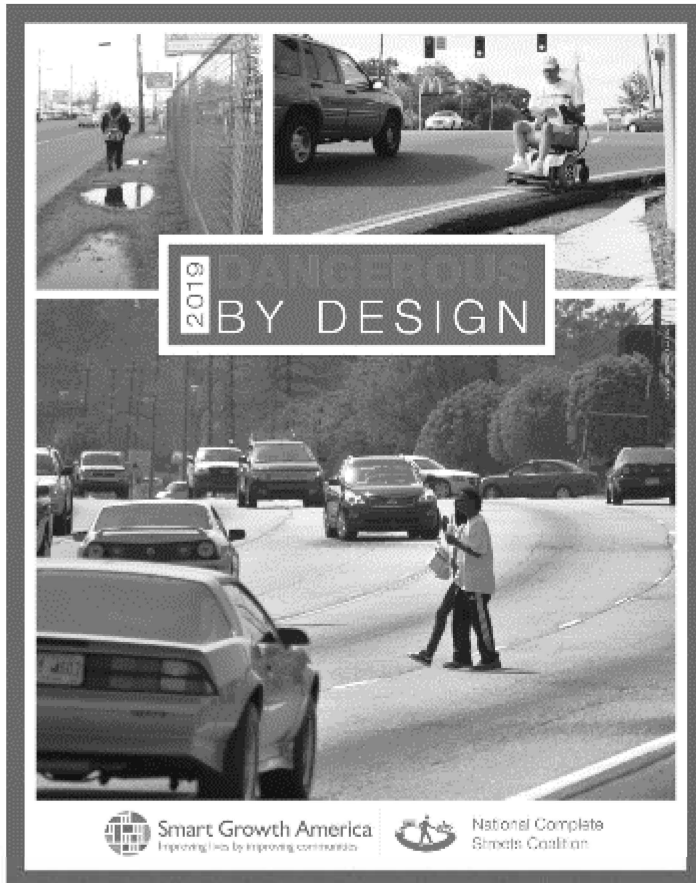


*"TRANSPORTATION HAS BEEN **WEAPONIZED** AS A
TOOL OF OPPRESSION WITHIN SOCIETY."*





HIGHWAY ROBBERY: HISTORIC TREME, NEW ORLEANS, LA



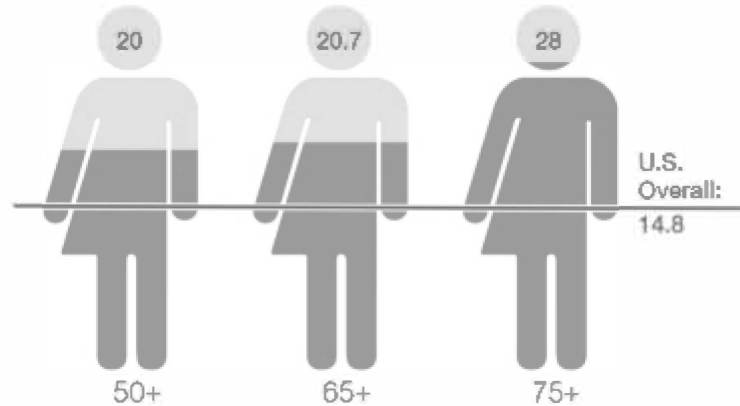
EQUITY: NATIONALLY

- **Who is most at risk?:**
- **“Older adults, people of color, and people walking in low-income communities** are disproportionately represented in fatal crashes involving people walking.”



Older adults are disproportionately represented in deaths of people walking

Relative pedestrian danger by age



SAFETY
BY DESIGN



Smart Growth America
Empowering lives by designing communities



National Complete
Streets Coalition

EQUITY: NATIONALLY

- Older Adults

- “Relative pedestrian danger for older adults age 50 and above is **more than a third higher** than the general population.”



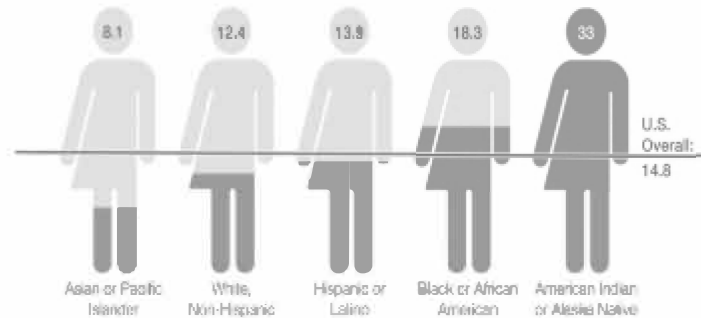
EQUITY: NATIONALLY

- **People of color**

- “Between 2008 and 2017, Black/African-Americans were **72% more likely** to have been struck and killed by drivers while walking.”

People of color are disproportionately represented in fatal crashes involving people walking.

Relative pedestrian danger by race and ethnicity, 2008-2017



2010 DANGEROUS
BY DESIGN



Smart Growth America
improving lives by improving communities



National Complete
Streets Coalition

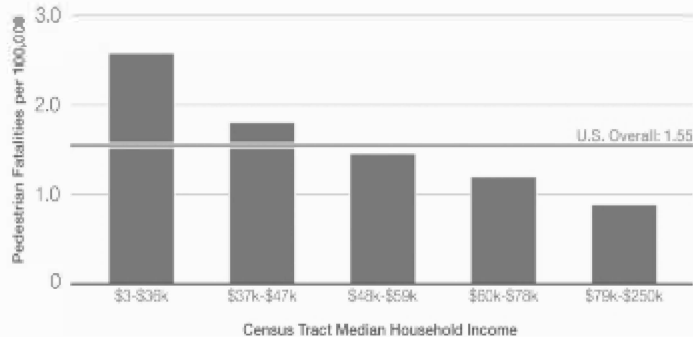


EQUITY: NATIONALLY

- **Low-income Neighborhoods**
- “People living in neighborhoods where the median household income is \$36,000 or less were killed at **much higher rates** than their counterparts.”

People die while walking at much higher rates in lower-income communities.

Based on income of census tracts where fatalities occur.



2019 DANGEROUS
BY DESIGN



Smart Growth America
Improving lives by improving communities



National Complete
Streets Coalition



Hurricane Katrina (August 23 – 25, 2005)

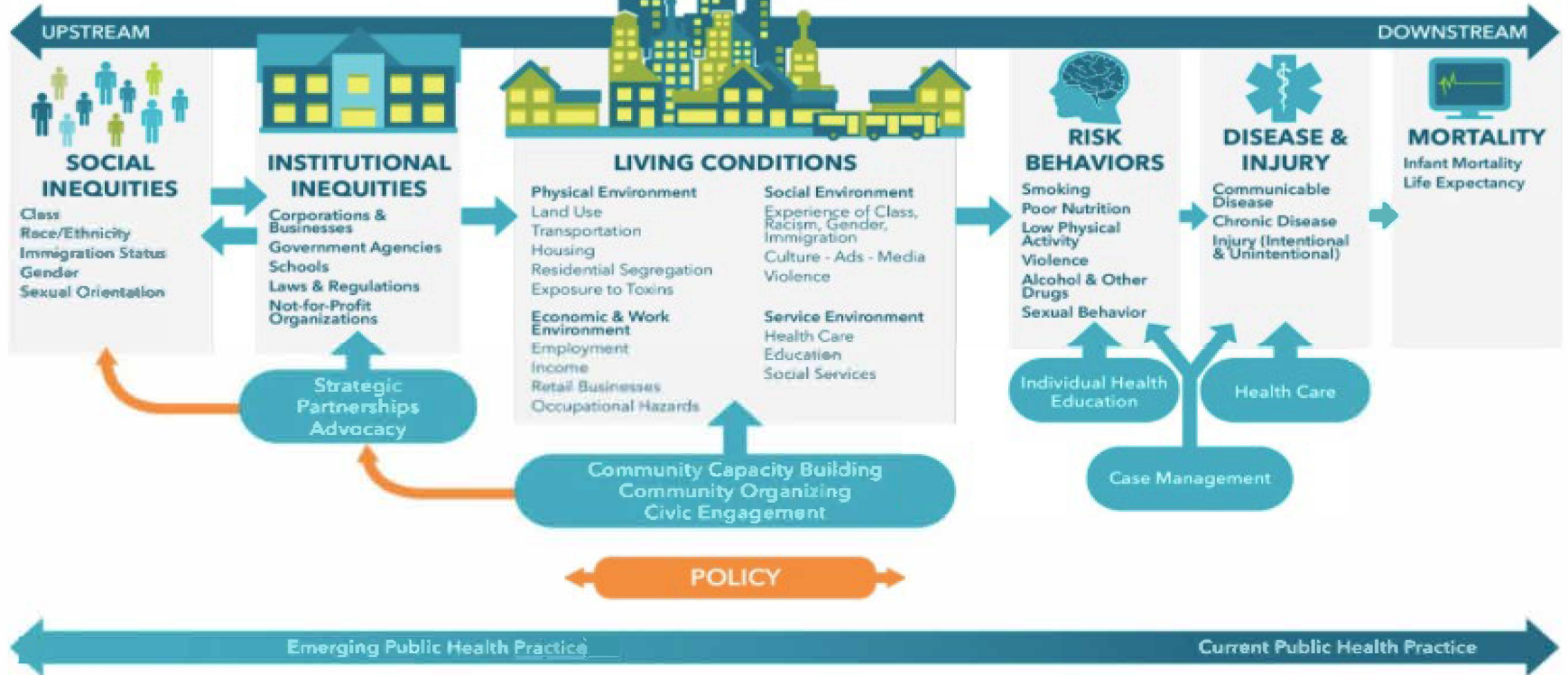


Hurricane Sandy (October 22 – November 2, 2012)



DOWNSTREAM VERSUS UPSTREAM APPROACH

A PUBLIC HEALTH FRAMEWORK FOR REDUCING HEALTH INEQUITIES BAY AREA REGIONAL HEALTH INEQUITIES INITIATIVE



Where we live, block by block

Houston, Texas, United States

What these colors mean

Greater than 75% of population
50-75%
Less than 50%

White, non-Hispanic

Black or African American, non-Hispanic

Hispanic

Asian

American Indian or Native Alaskan

Native Hawaiian or Pacific Islander

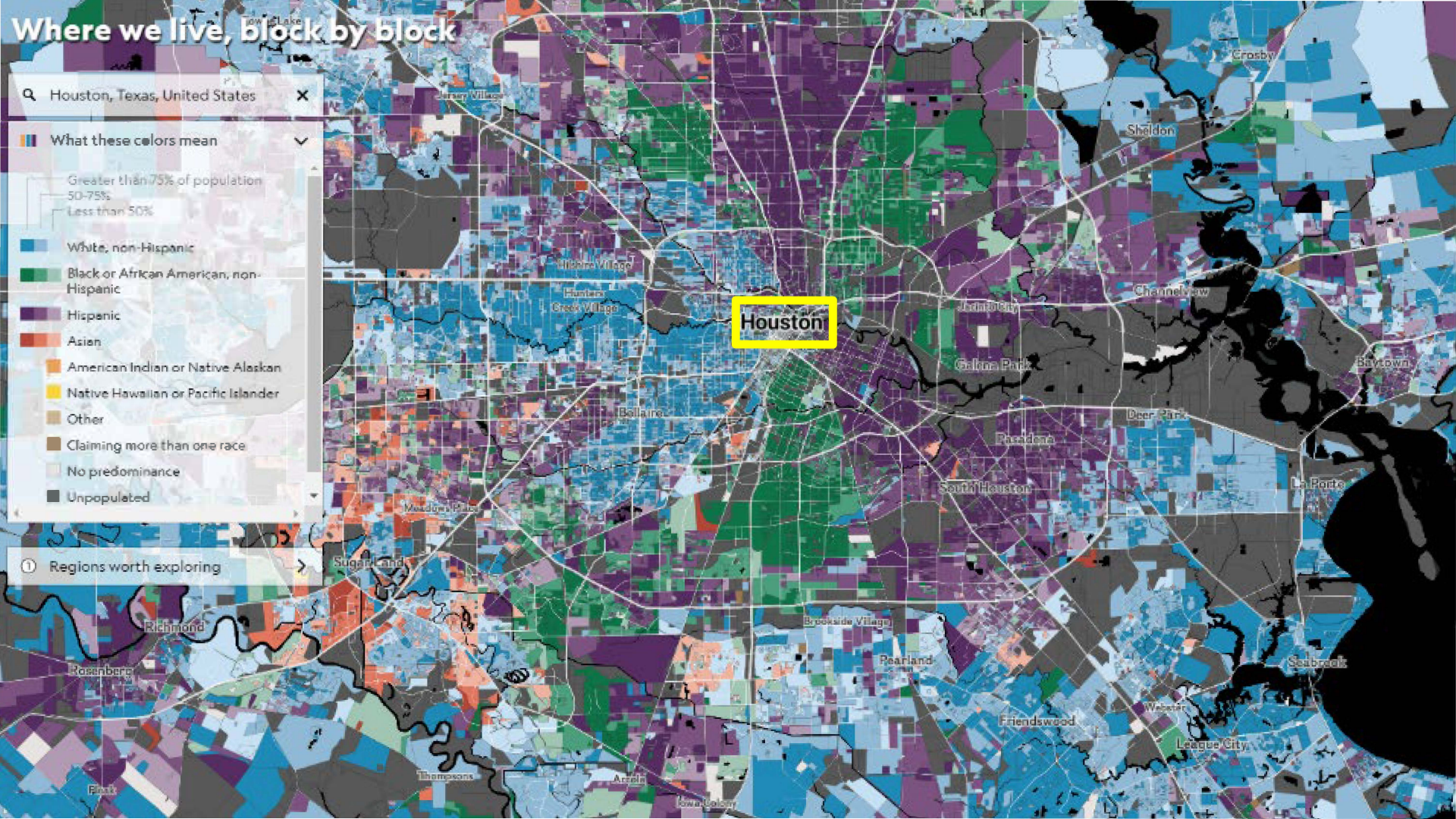
Other

Claiming more than one race

No predominance

Unpopulated

Regions worth exploring



Where we live, block by block

Atlanta, Georgia, United States

What these colors mean

- Greater than 75% of population
- 50-75%
- Less than 50%
- White, non-Hispanic
- Black or African American, non-Hispanic
- Hispanic
- Asian
- American Indian or Native Alaskan
- Native Hawaiian or Pacific Islander
- Other
- Claiming more than one race
- No predominance
- Unpopulated

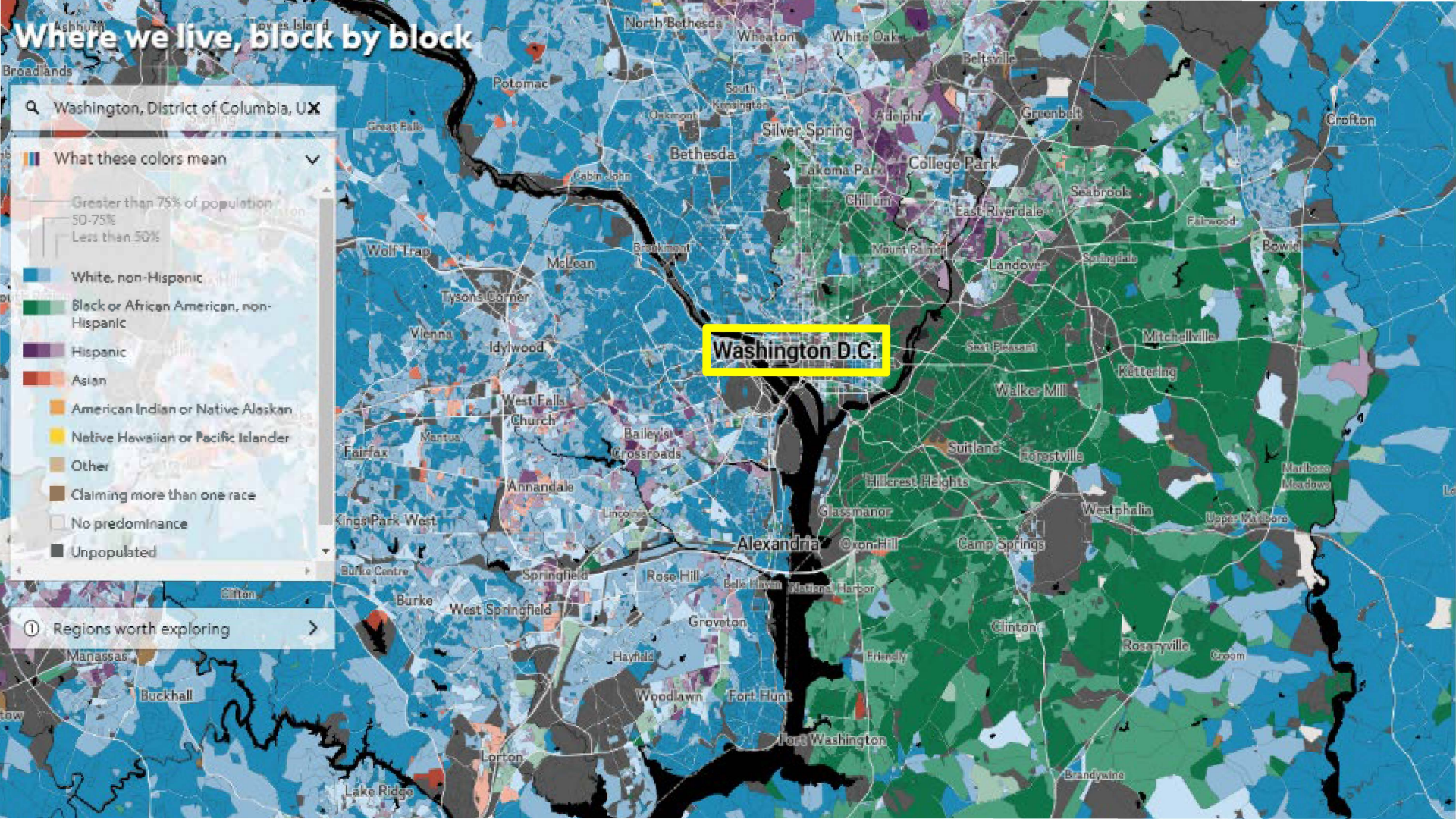
Regions worth exploring

④



1

Where we live, block by block



Where we live, block by block

Portland, Oregon, United States

What these colors mean



Regions worth exploring



EQUITY IMPLICATIONS



Race



Place



Health



**“HISTORY DOESN'T SAY
GOODBYE; HISTORY SAYS
SEE YOU LATER.”**





CALIFORNIA IS THE
16TH MOST DANGEROUS
STATE FOR PEDESTRIANS



HOW CAN **WE** CREATE
A SAFE, EQUITABLE
AND INCLUSIVE
SYSTEM FOR **ALL**?





whitespace

#1. EQUITY & JUSTICE FRAMEWORK

- Distributive Justice
- Procedural Justice
- Interactional Justice
- Representational Justice
- Care





DISTRIBUTIVE JUSTICE:
**WHO HAS PHYSICAL ACCESS TO THE STREET,
PARK OR TRAIL?**





MAJOR TAKEAWAYS:

- **Most respondents (54%) do not feel that children are safe from traffic when bicycling in their neighborhoods.**



MAJOR TAKEAWAYS: Nearly 1 in 4 (22%) feel they can safely bike to local parks or trails from their homes.



PROCEDURAL JUSTICE:
**WHO HAS INFLUENCE OVER THE DESIGN,
OPERATIONS, AND PROGRAMMING?**





MAJOR TAKEAWAYS:

- **Minority youth are not including in planning and transportation decision-making processes.**



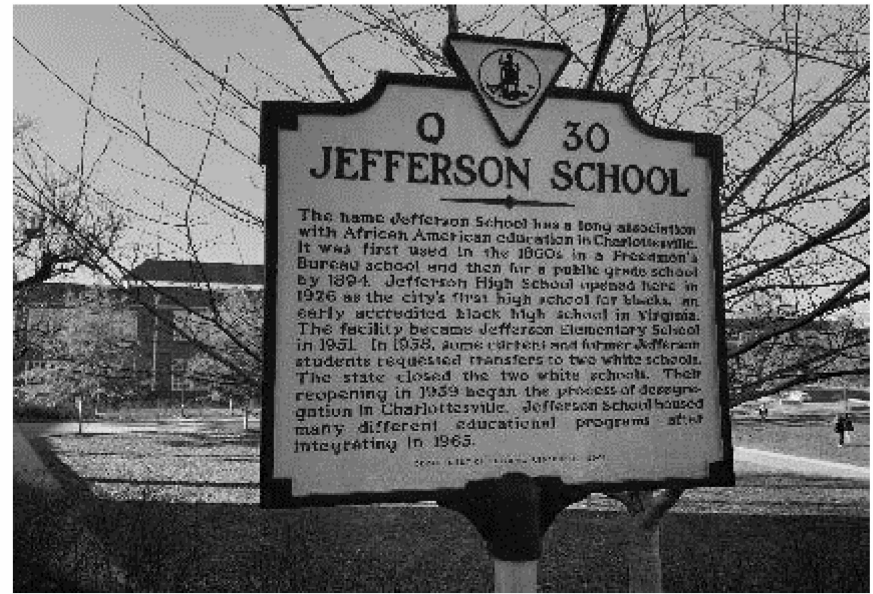
INTERACTIONAL JUSTICE:
**WHAT MAKES PEOPLE FEEL WELCOME OR
UNWANTED IN THE SPACE?**





MAJOR TAKEAWAYS:

- African-Americans are **2.5 times** more likely to be killed by law enforcement. Males reported being stopped at a rate **7x** than that of females.



REPRESENTATIONAL JUSTICE:
**DO PEOPLE FEEL THEIR EXPERIENCE AND
HISTORY IS REPRESENTED IN THE SPACE?**





MAJOR TAKEAWAYS:

- Think about how often historical and cultural **erasure** takes place in communities across the country



USDA
United States Department of Agriculture

**FOREST SERVICE
U.S.
DEPARTMENT OF AGRICULTURE**

PLEASE DO YOUR PART

PRACTICE SOCIAL DISTANCING
Provide space of at least 6 feet at all times during your visit

DO NOT GATHER IN GROUPS
Follow the latest guidance from officials

COMMUNICATE WITH OTHERS AS YOU PASS
Alert trail user of your presence and step aside to let others pass

PACK OUT YOUR TRASH
Leave with everything you bring in and use

**PACK IT IN
PACK IT OUT**

Forest Service
Pacific Southwest Region

USDA is an equal opportunity provider, employer, and lender.

CARE:

**HOW DO PEOPLE DEMONSTRATE THEIR CARE
FOR THE SPACE AND OTHER PEOPLE IN IT?**





MAJOR TAKEAWAYS:

- **Our systems are biased against women and doesn't protect religious minority groups.**



#2. EQUITY STRATEGIES & RECOMMENDATIONS

- Anti-Racist Values/Culture
- Racial Equity Action Plan
- Equity Trainings
- Equity Performance Measures
- Internal Equity Group
- External Equity Advisory Group





GENTRIFICATION AND DISPLACEMENT:

**“TREES PLANTED IN MINORITY COMMUNITIES
MATURE JUST IN TIME FOR GENTRIFICATION TO
TAKE PLACE**





**“NEVER FORGET THAT
JUSTICE IS WHAT LOVE
LOOKS LIKE IN PUBLIC.”—
CORNEL WEST**

CONTACT INFORMATION

- **Charles T. Brown, MPA, CPD, LCI**
- Rutgers: charles.brown@ejb.rutgers.edu
- Personal: charlesbrown@equitablecities.com



@ctbrown1911

