

# 2022 CALGreen

## California Department of Housing and Community Development (HCD)

Kyle Krause, CBO  
Acting Deputy Director





## Electric Vehicle (EV) Charging

- Significant steps forward
- 2022 CALGreen - effective Jan 1, 2023
- Governor's Executive Orders
  - B-16-2012 (1.5 millions ZEVs in California)
  - B-48-2018 (250,000 ZEV chargers by 2025)
  - N-79-20 (100% of sales of passenger cars and trucks to be ZEV by 2025)



## Electric Vehicle (EV) Terminology

- EV Charging Space (EV Space)
- EV Charging Station (EVCS)
- EV Capable Space
- EV Ready Space
- Level 2 EV Supply Equipment (EVSE)
- Low Power Level 2 EV Charging Receptacle



# New One- and Two-Family Homes and Townhomes with Attached Private Garages

## 2019

- All EV Capable (EV Charging Space).
- Raceway
- Service panel and/or subpanel capacity and space(s).
- “EV CAPABLE” label on panel or subpanel.

## 2022

No change.



# New Multifamily Dwellings

## 2019

- 10% of parking spaces to be EV Capable (EV Charging Spaces).
- Spaces must be identified on plans.
- No chargers required to be installed.

## 2022

No change to EV Capable percentage.



## New Hotels and Motels

### 2019

- 6% of parking spaces to be EV Capable (EV Charging Spaces).
- Spaces must be identified on plans.

### 2022

10% of parking spaces to be EV Capable (EV Charging Spaces).



**New**

## **Multifamily Dwellings and Hotels/Motels**

**2019 -** EV Capable spaces only  
No immediate charging available

**2022 -** **EV Charging becomes available!**

- 25% of parking spaces require low power Level 2 receptacles
- 5% of parking spaces in buildings with 20 or more units require higher power Level 2 chargers (EVSE)
- Some tradeoffs for chargers



# Existing and New Parking Facilities for Multifamily Dwellings

**2019** - No requirements.

**2022** - EV Capable spaces required.

- 10% of new parking spaces for existing buildings.
- 10% of altered spaces to be EV Capable (permitted activities).





# Multifamily Dwellings and Hotels/Motels Voluntary Measures – Tiers 1 and 2

**2019** - Percentages of EV Capable spaces increased to 15% and 20% for Tier 1 and Tier 2, respectively.

**2022** - No EV Capable requirements.

- Percentage of Low Power Level 2 receptacles increased to 35% and 40% for Tier 1 and Tier 2, respectively.
- 10% and 15% percent of total parking spaces for projects with 20 or more units to have EVSE (chargers) for Tier 1 and Tier 2, respectively.



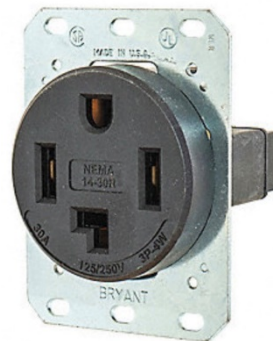
# Receptacles



Level 2 16-Amp with NEMA 14-30 receptacle



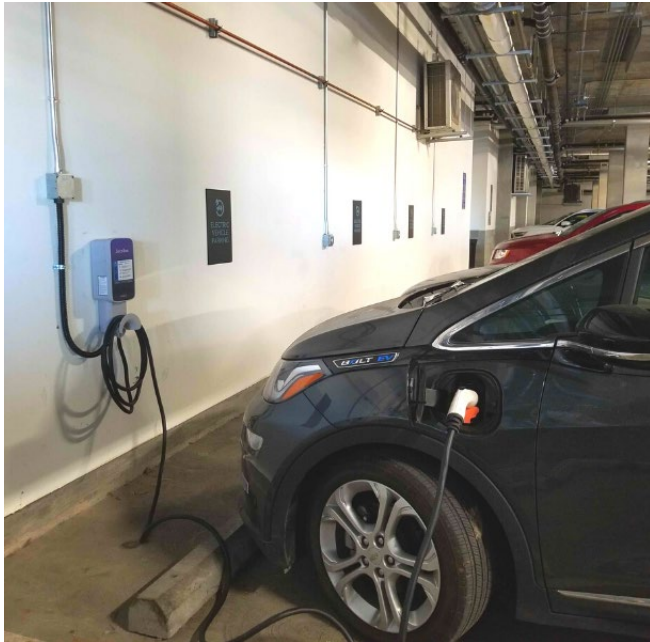
Portable Charger switches between 120V and 240V



NEMA 14-30 is a four-wire 240v, 30Amp receptacle



# Chargers



# Questions or Comments?

