

# California Statewide Local Streets & Roads Needs Assessment - 2020 Update

California Transportation Commission  
October 13-14, 2021

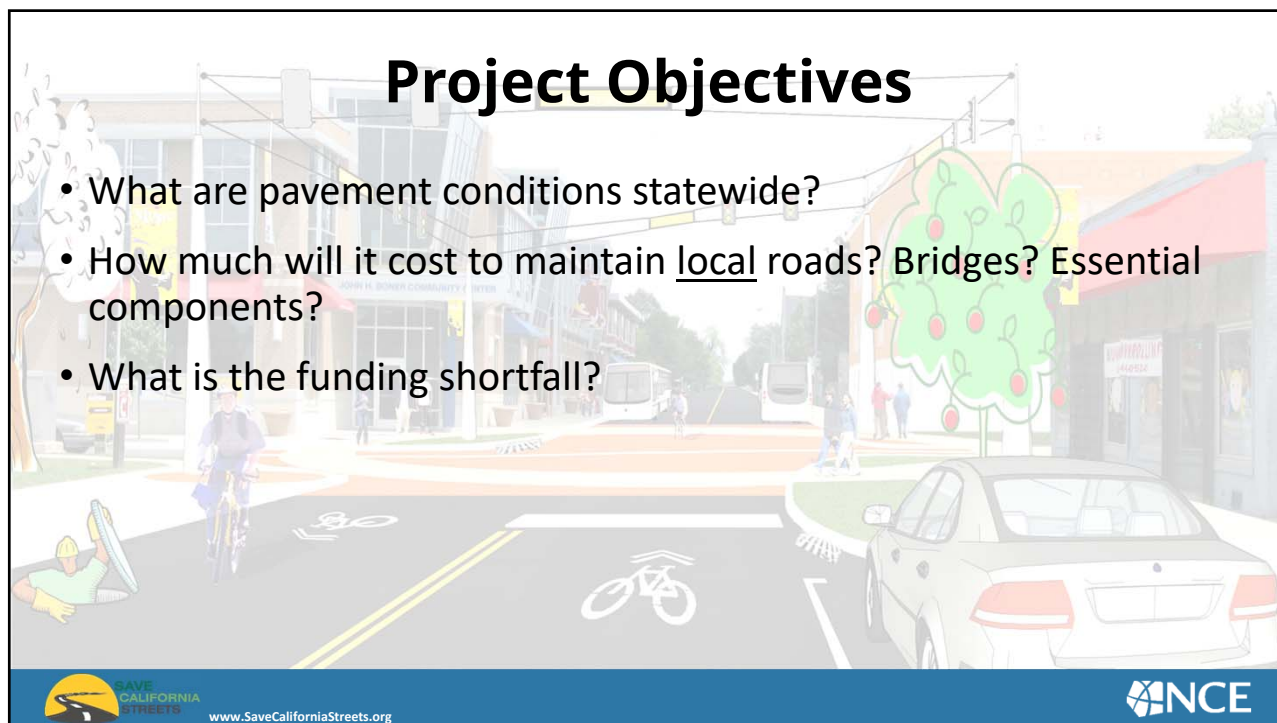


Logos: CSAC, LEAGUE OF CALIFORNIA CITIES, M, RTPA RCTF, NCE

1

## Project Objectives

- What are pavement conditions statewide?
- How much will it cost to maintain local roads? Bridges? Essential components?
- What is the funding shortfall?

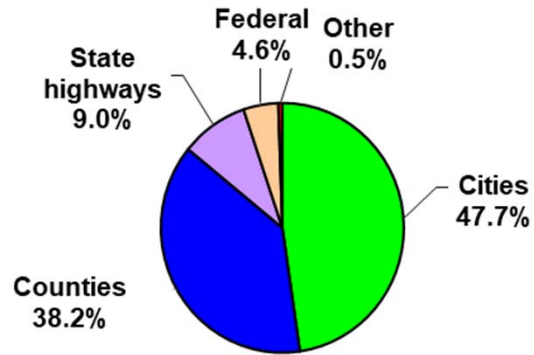


Logos: SAVE CALIFORNIA STREETS, www.SaveCaliforniaStreets.org, NCE

2

## Local Roads Are A Huge Part of California's Network

More than 85% of California's roads are owned by cities and counties. That's more than 144,000 centerline miles.

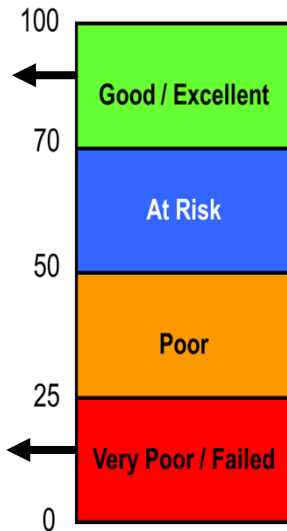


www.SaveCaliforniaStreets.org



3

## Average Statewide PCI



2020  
Average PCI = 66  
Cities = 68  
Counties = 61



www.SaveCaliforniaStreets.org



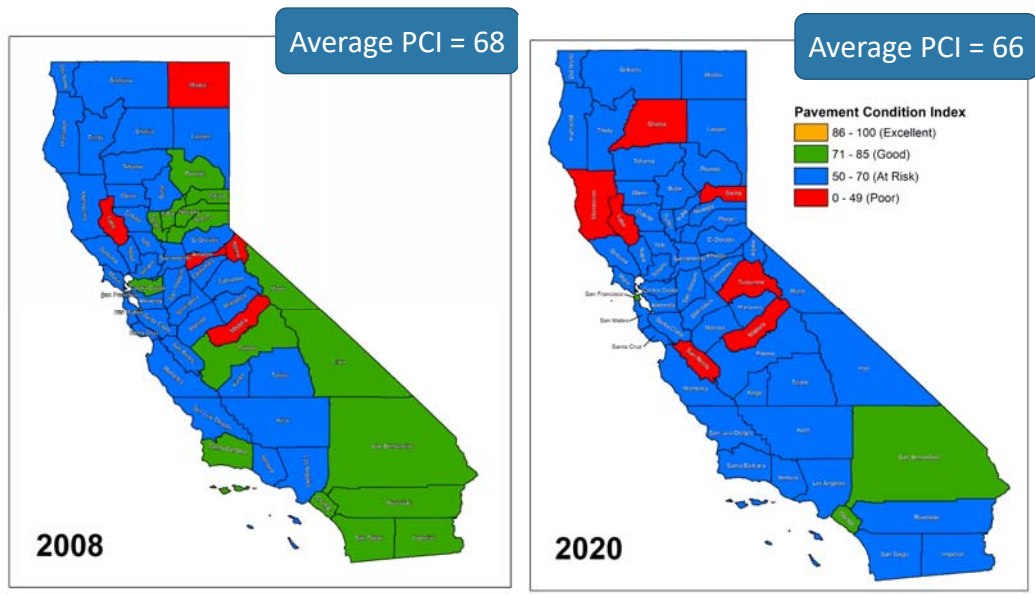
4

PCI of 66  
Looks  
Like This



5

### Compare 2008 with 2020

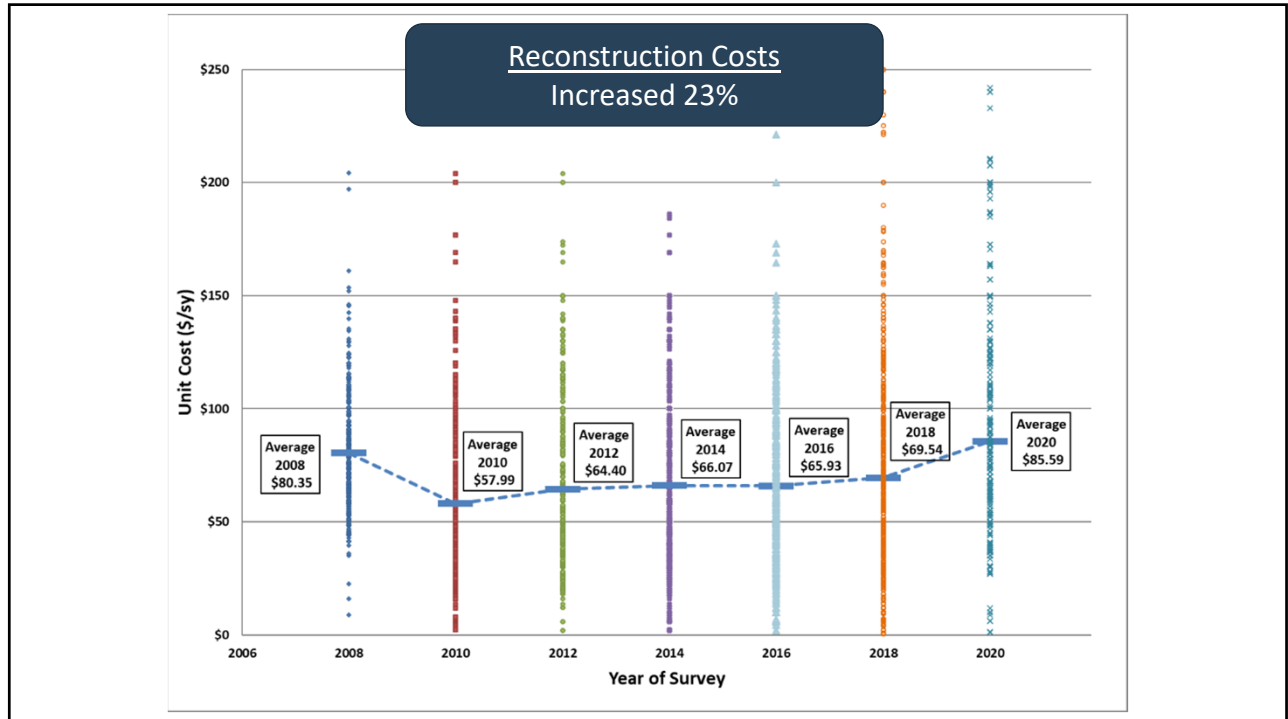


6

# Construction Costs Have Increased Significantly



7



8



9

### Essential Components Include:

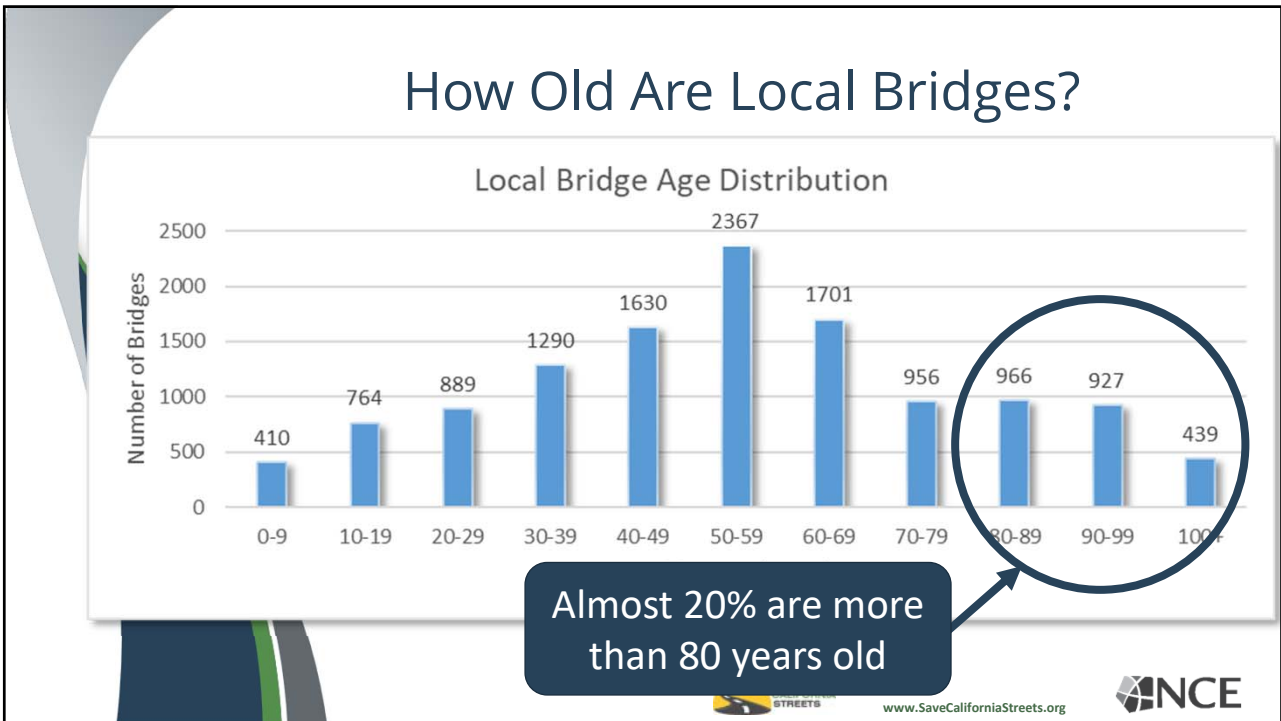
They add up ... approximately 30% of total needs!

 [www.SaveCaliforniaStreets.org](http://www.SaveCaliforniaStreets.org) 

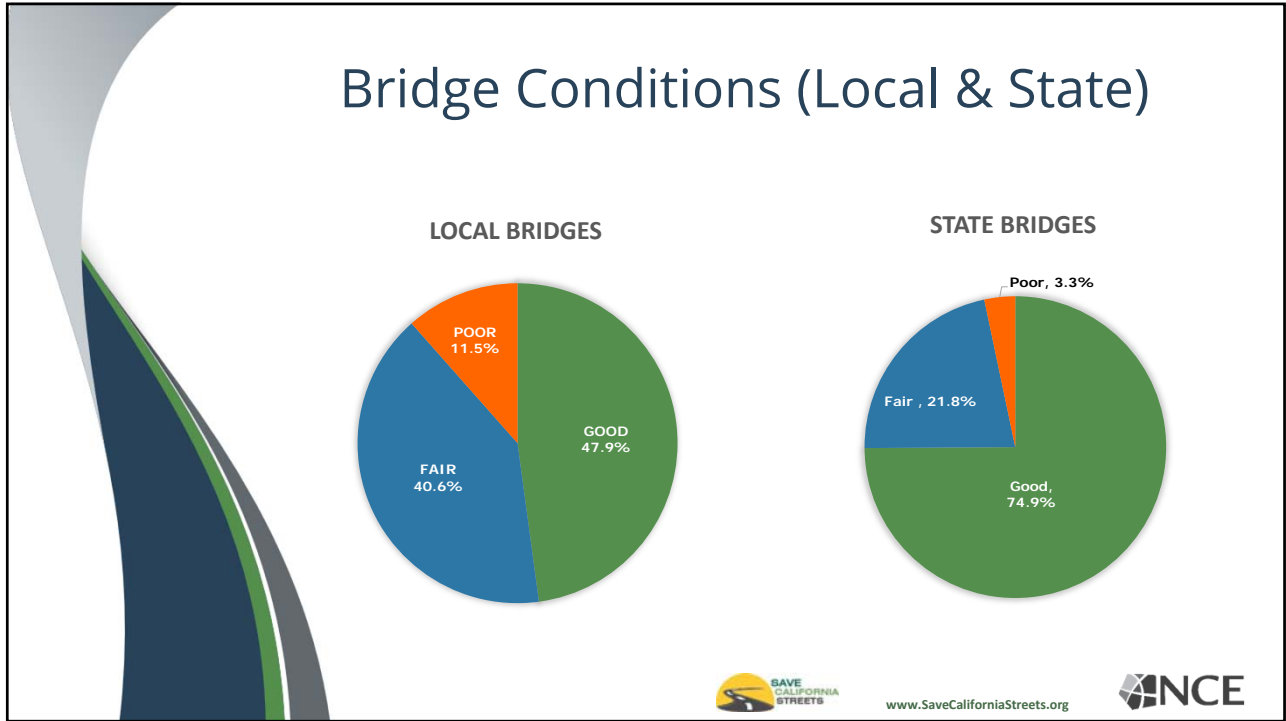
10



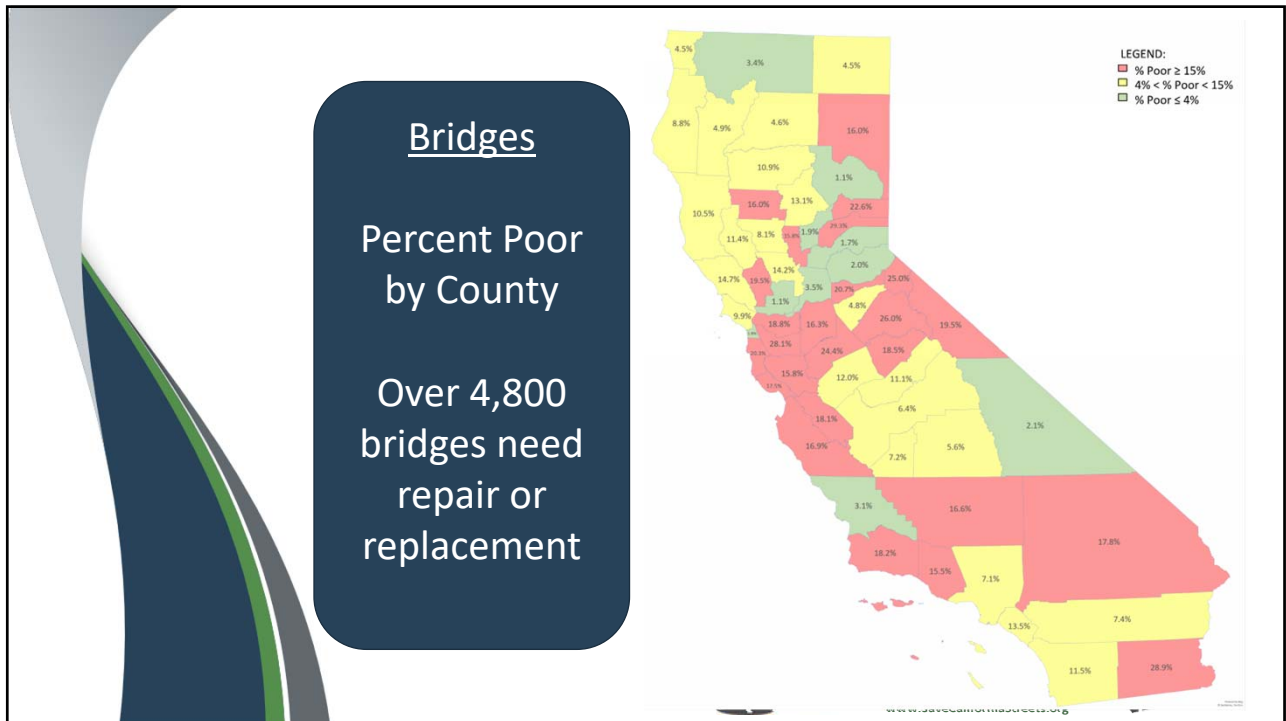
11



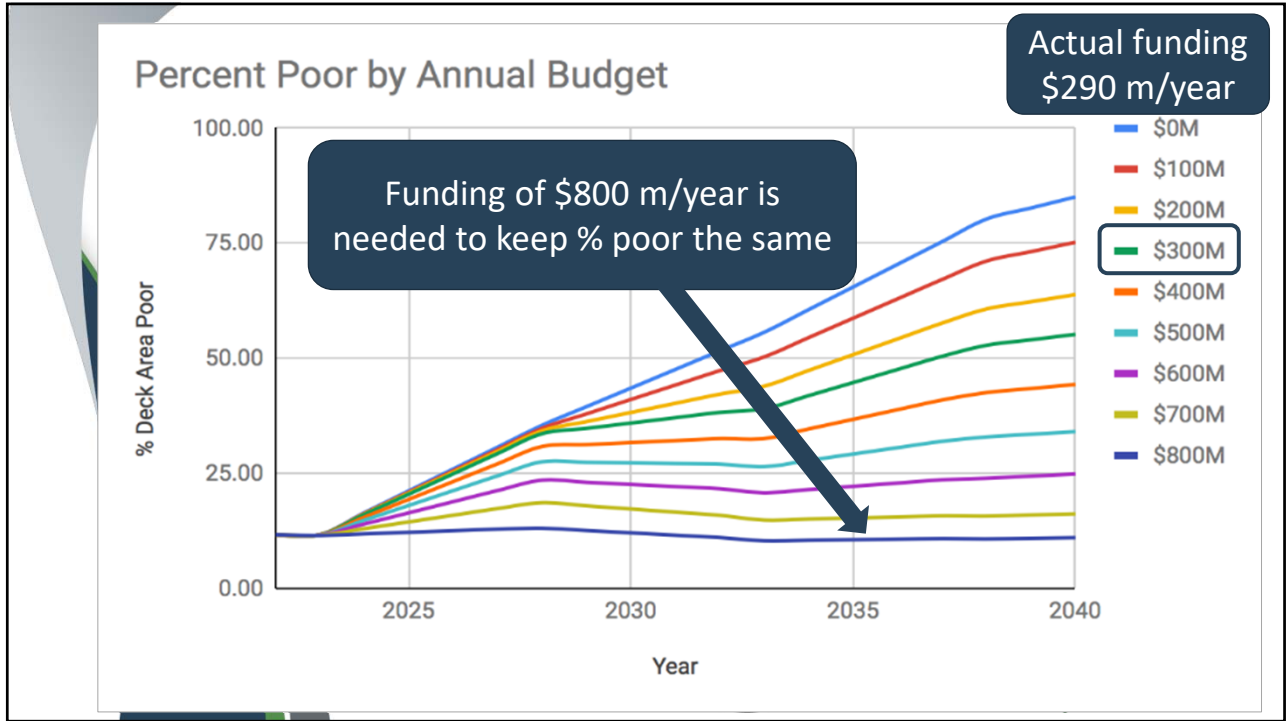
12



13



14

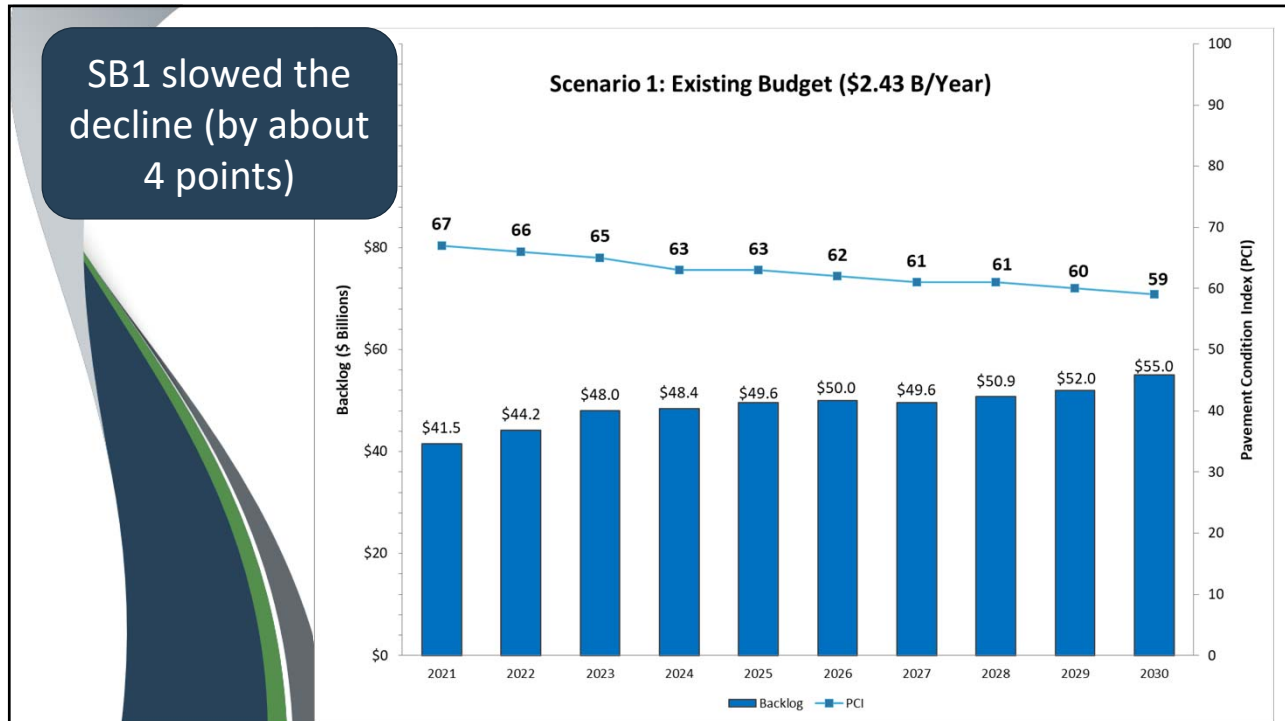


15

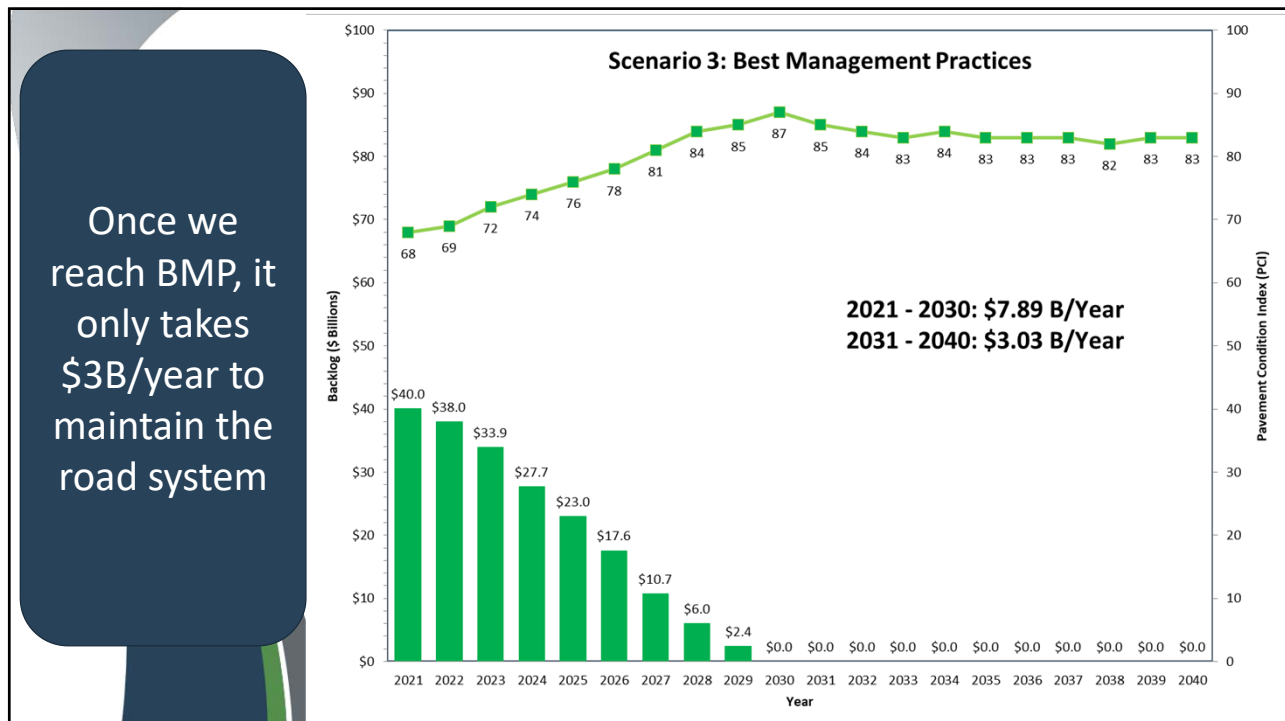


16





17



18

## Statewide Needs Summary

Transportation Asset	Needs (\$B)	2020 (\$B)		
	2018	Needs	Funding	Shortfall
Pavement	\$ 61.7	\$ 76.0	\$ 38.4	\$ (37.6)
Essential Components	\$ 34.1	\$ 35.5	\$ 13.4	\$ (22.1)
Bridges	\$ 5.5	\$ 7.2	\$ 2.9	\$ (4.3)
<b>Totals</b>	<b>\$ 101.3</b>	<b>\$ 118.7</b>	<b>\$ 54.7</b>	<b>\$ (64.0)</b>



[www.SaveCaliforniaStreets.org](http://www.SaveCaliforniaStreets.org)



19

## Key Findings

- SB 1 arrested historical deterioration over last 2 years
  - Could be underestimated because PCI lags
  - 2018 was a conservative year due to repeal efforts
  - Not enough data to fully appreciate impacts of SB 1
- Local bridges are still aging
  - Over 4,800 bridges need repair or replacement
  - Dedicated funding has been flat for over 10 years
  - Need additional \$500m/year to maintain bridges
- Construction costs went up sharply
  - Unintended consequence of SB1?
- Funding shortfall of \$64 billion



[www.SaveCaliforniaStreets.org](http://www.SaveCaliforniaStreets.org)



20

To download the report, go to:  
[www.SaveCaliforniaStreets.org](http://www.SaveCaliforniaStreets.org)



Contact Us:

Margot Yapp, NCE  
President  
[myapp@ncenet.com](mailto:myapp@ncenet.com)

Chris Lee, CSAC  
Legislative Representative  
[clee@counties.org](mailto:clee@counties.org)

Damon Conklin, League of CA Cities  
Legislative Representative  
[dconklin@cacities.org](mailto:dconklin@cacities.org)

