

REAP 2.0 CTC/CARB/HCD Joint Meeting 4/7/22

REGIONAL EARLY ACTION PLANNING GRANTS OF 2021
STATE OF CALIFORNIA

Housing and Community Development
Office of Planning and Research
California Strategic Growth Council
California Air Resource Board



REAP 2.0 Partner Agencies



California Department of Housing and Community Development – Increases the supply of affordable places to live in California, including through planning and implementation grants



Governor's Office of Planning and Research- State's comprehensive planning agency



CALIFORNIA
STRATEGIC
GROWTH
COUNCIL

California Strategic Growth Council – cabinet-level committee charged with inter-agency coordination on key environmental and housing issues



California Air Resources Board – state agency for climate change programs and air pollution control



Quick Overview

- \$600 million new grant program as part of the CA Comeback Plan (funded under AB 140)
 - \$500 million Federal Coronavirus Fiscal Recovery Fund of 2021
 - \$100 million State General Fund
- Supports projects across the State that help create additional homes near daily destinations by
 - Supporting infill housing production and affordability goals
 - Affirmatively Furthering Fair Housing (AFFH)
 - Reducing Vehicle Miles Traveled (VMT)



CALIFORNIA
STRATEGIC
GROWTH
COUNCIL



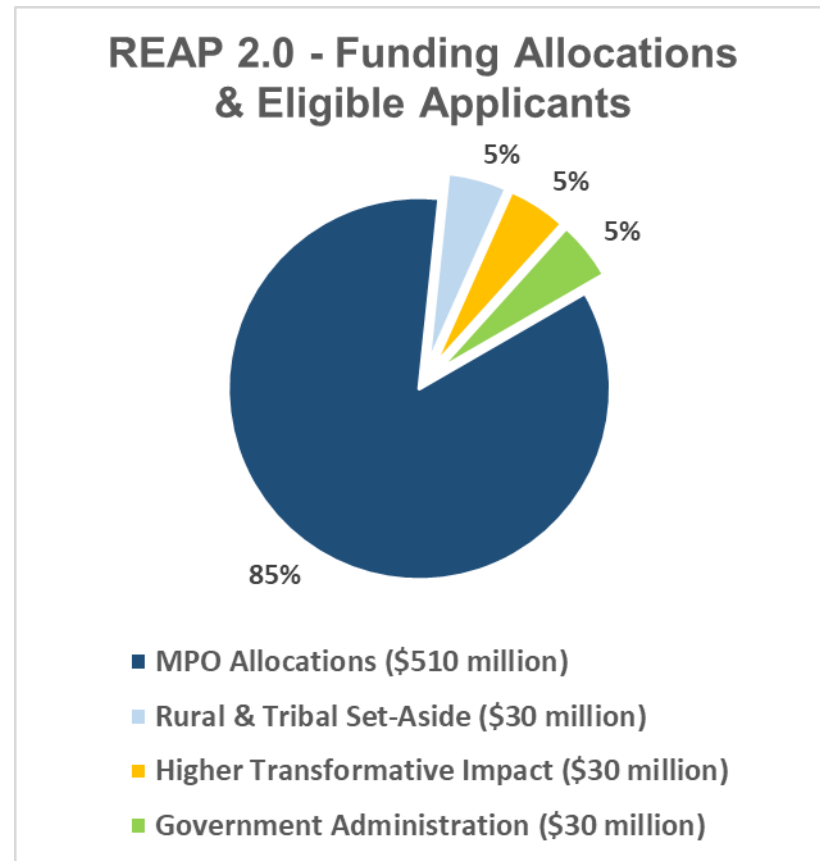
Background

- Recognition that the State is not on track to meet its Housing & Climate Goals
 - Co-benefits of planning for housing in way that reduces VMT for public health, equity, land conservation, and economic goals in addition to addressing housing & climate crises
- Success of REAP 1.0 (2019)
 - \$125m for narrower uses that focused on accelerating housing production through planning activities
- Success of REAP 1.0 + State surplus + coronavirus aid package = CA Legislature making a big investment in REAP 2.0 in 2021

Program Overview

- Regional planning agencies, counties in rural areas not a part of a regional planning agency, and tribal entities eligible for funding
 - Can suballocate to local jurisdictions and eligible entities
- Grant program that funds both planning and implementation activities
- Program Objectives:
 - Accelerate infill development that facilitates housing supply, choice, and affordability
 - Affirmatively Further Fair Housing (AFFH)
 - Coronavirus Economic Recovery
 - Reduce Vehicle Miles Traveled (VMT)
- Transformative Emphasis
- More than halfway through the program development stage for REAP 2.0
 - Framework Paper & Survey released in November for input on initial broad concepts. Received over 65+ detailed responses
 - Draft Guidelines for MPO allocation and Tribal/Rural Allocation released on 3/24/22
 - Currently in the draft guidelines public comment period which will close 4/15/22

Funding



- Funding Breakdown
 1. MPO over-the-counter allocations based on 2030 projected population (\$510m)
 2. Rural Non-MPO Counties & Tribal Entities Competitive Set-aside (\$30m)
 3. Higher Impact Transformative Competitive Set-aside (\$30m)
 4. State Program Admin (\$30m)

REAP 2.0 MPO/COG Formula-Based Maximum Allocation Amounts

The REAP 2.0 program makes available 85 percent of funds (\$510,000,000) to MPOs and COGs through the "Formula Allocations to MPOs and COGs" funding stream. Maximum award amounts are based on California Department of Finance 2030 Population Projections.

Applicant	Max. award amount
Association of Monterey Bay Area Governments	\$ 10,133,742.41
Butte County Association of Governments	\$ 2,944,762.37
Fresno Council of Governments	\$ 13,633,148.06
Kern Council of Governments	\$ 12,670,717.96
Kings County Association of Governments	\$ 2,060,590.24
Madera County Transportation Commission	\$ 2,213,724.74
Merced County Association of Governments	\$ 3,912,152.75
Metropolitan Transportation Commission	\$ 102,842,103.03
Sacramento Area Council of Governments	\$ 33,727,893.48
San Diego Association of Governments	\$ 43,037,322.72
San Joaquin Council of Governments	\$ 10,612,514.62
San Luis Obispo Council of Governments	\$ 3,539,684.58
Santa Barbara County Association of Governments	\$ 5,839,412.28
Shasta County Regional Transportation Agency	\$ 2,243,909.07
Stanislaus Council of Governments	\$ 7,535,242.05
Southern California Association of Governments	\$ 246,024,084.00
Tahoe Regional Planning Agency	\$ 604,134.15
Tulare County Association of Governments	\$ 6,424,861.49

Proposed Non-MPO Award Amounts

Geographic category	Counties	Maximum amount available	Population
<u>Eastern Slope</u>		\$672,144.65	33,323
	Alpine		
	Inyo		
	Mono		
<u>Far North</u>		\$2,060,042.77	102,131
	Lassen		
	Modoc		
	Plumas		
	Sierra		
	Siskiyou		
<u>Motherlode</u>		\$5,132,972.02	254,478
	Amador		
	Calaveras		
	Mariposa		
	Nevada		
	Tuolumne		
<u>North Coast</u>		\$6,603,327.52	327,374
	Del Norte		
	Humboldt		
	Lake		
	Mendocino		
	Trinity		
<u>Upper Sacramento Valley</u>		\$2,406,513.04	119,308
	Colusa		
	Glenn		
	Tehama		
Counties (geographic set aside)		\$16,875,000.00	836,614
Counties (residual)		\$5,625,000.00	-
Tribal Entities		\$7,500,000.00	-
Total		\$30,000,000.00	



CALIFORNIA
STRATEGIC
GROWTH
COUNCIL



Nexus Requirement

Each application should satisfy housing, VMT reduction, and AFFH goals. MPO applicants must also have a nexus to pandemic recovery (not applicable for tribal/rural allocation)

Accelerate
Infill Housing



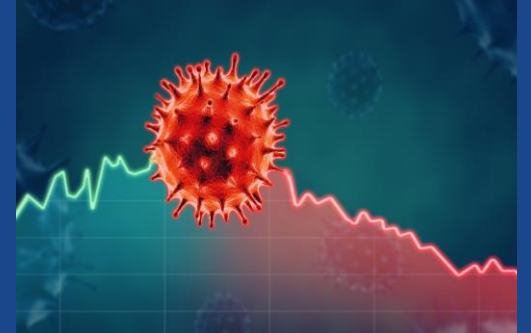
Reduce Vehicle
Miles Traveled



Affirmatively
Further Fair
Housing



Covid-19 Recovery



State and Local Fiscal Recovery Funds (SLFRF)

- \$500 million of the \$600 million total from REAP 2.0 comes from Federal Covid-19 Relief dollars, with its own requirements (SLFRF)
- SLFRF is meant to address negative economic impacts of COVID-19 for impacted households— as a result, REAP 2.0 activities funded by SLFRF dollars have a narrower list of eligible uses than REAP 2.0 activities funded by General Fund dollars (see Draft Guidelines for more detail)
- Rural/Tribal Allocation only funded by General Fund, not SLFRF

Possible Use of Funds

- This is a flexible program
- A sampling of possible uses:
 - Planning activity that leads to significant upzoning near transit or in an infill area
 - Program-level environmental clearance to eliminate need for project-specific review for new infill housing projects
 - Infrastructure investments to ready infill sites for housing development, and other predevelopment costs
 - Regional housing trust funds
 - Non-motorized transportation programs and infrastructure investments that support new housing in infill areas
 - Connecting new infill housing to daily services
- See Draft Guidelines for more information

High-Level Timeline

- Fall 2021 – May 2022: Program Development
- January 2022: Advance Application Released
- March 24, 2022: Draft Guidelines Released
- March 24 – April 15, 2022: Public Comment Period
- May 2022: Final Guidelines and Program Launch
- Summer 2022: Higher Impact and Transformative Allocation NOFA released
- December 31, 2022: Final Application Deadline for All Buckets of Funding
- June 2024: Encumbrance Deadline (All Funds Must be Awarded and Encumbered)
- June 2026: Expenditure Deadline (All Funds Must be Spent by Awardees)

Draft Guidelines – Public Comment Period Closes 4/15

Regional Early Action Planning Grants of 2021 (REAP 2.0)

Draft Guidelines for Metropolitan Planning Organizations

State of California
Governor Gavin Newsom



March 2022
Website: <https://www.hcd.ca.gov/grants-funding/active-funding/reap2.shtml>
Email: REAP2021@hcd.ca.gov

Tribal and Rural Allocation Regional Early Action Planning Grants of 2021 (REAP 2.0)

Draft Guidelines for the Tribal and Rural Allocation

State of California
Governor Gavin Newsom



March 2022
Website: <https://www.hcd.ca.gov/grants-funding/active-funding/reap2.shtml>
Email: REAP2021@hcd.ca.gov

Questions? Contact Information for REAP 2.0

- REAP2021@hcd.ca.gov
- <https://www.hcd.ca.gov/grants-funding/active-funding/reap2.shtml>