

Overview: Community Transportation Needs Assessment



Regional Stakeholders



CMO is a statewide initiative that provides funding for zero-emission shared mobility options to under-resourced communities in California. CMO is available throughout California to all eligible disadvantaged and low-income communities and tribal governments, to increase access to safe, reliable, convenient and affordable transportation options. For eligibility requirements, application information and to contact the technical assistance team, please visit: www.cleanmobilityoptions.org.

History of Action

The **Stanislaus Sustainable Communities Coalition (SSCC)** began in 2015. The coalition **works with residents, community based organizations, education and government partners** to address social and environmental justice concerns Stanislaus County.

The SSCC leads and supports initiatives that ensures that communities are:

- Included in the civic engagement process,
- Able to access agendas and technical documents in multiple languages,
- Involved and informed of local projects or initiatives that will impact their communities, and
- Understand and advocate for funding to improve critical infrastructure in their communities (roads, sewer, sidewalks, lighting, public spaces, etc.)





Education

- Facilitated focus groups and community workshops to learn, understand and plan to address social and environmental justice concerns. For example, the SSCC member organizations have co-facilitated civic engagement, leadership development, public speaking workshops in English and Spanish.



Data and Plans

- Partner with higher education institutions (i.e. CSU Stanislaus, UC Merced and Santa Clara University) and statewide organizations (i.e. California Walks, National Safe Routes Partnership) to learn about community data, understand what the data is telling us, and co-develop plans with resident leader to make changes.
- The SSCC has supported various Safe Routes to Schools initiatives in Stanislaus County. SSCC member organizations partnered with CalWalks and Safe Routes Partnership to develop Safe Routes plans, which lead to Stanislaus County to apply and successfully obtain Round 4 ATP funds for Modesto's Airport Neighborhood (one of the most vulnerable census tracts according to CalEnviroScreen).



Policy

- The SSCC is in the process of finalizing Recommendations for Modesto Comprehensive General Plan. The document provides policy recommendation for the Environmental Justice Element (Chapter) based on community participation and input. There are some policies recommendations related to transportation.



Programs

- Host workshops and provide information to residents of Stanislaus County about federal and state programs. Valley Improvement Projects (VIP) is part of the Clean Vehicle Empowerment Collaborative (CVEC) whose goal is to inform residents about EV's and programs to access EV's. CVEC also focuses on addressing accessibility of purchasing EV's and charging stations challenges.

California Climate Initiatives Clean Mobility Options investments in Stanislaus County



- Three local nonprofits awarded research vouchers
- Conduct targeted needs assessments
- Building capacity for future clean mobility projects

01 Doing the Research

By gathering data from local residents, recommended data sources, and analyzing it, we hope to improve the transportation infrastructure and increase access to clean transportation options.



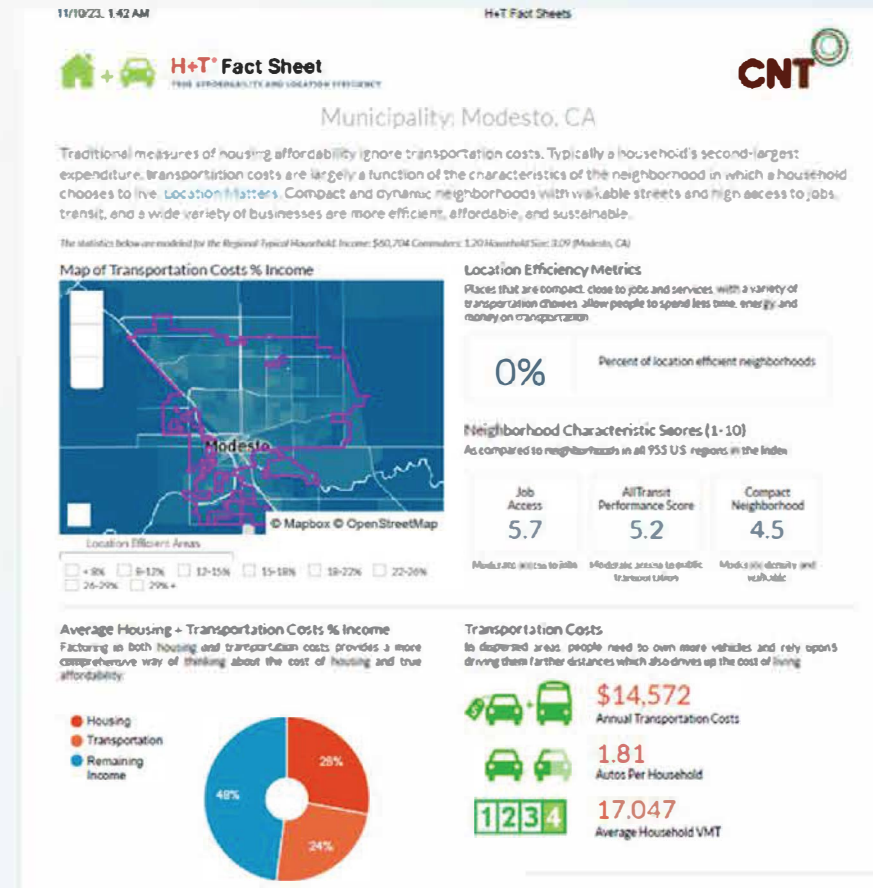
Looking at Data Sources

Transportation Access Data Analysis

We will look at **Recommended Data Sources** to determine mobility patterns and transportation gaps.

On-the-Ground Data **Collection to obtain more localized** and accurate information.

Additional Data Sources that provide neighborhood characteristics, i.e., parks, schools, health clinics, retail shopping, and/or points of interests.



TIMS SWITRS Crash Summary & Map

Overview

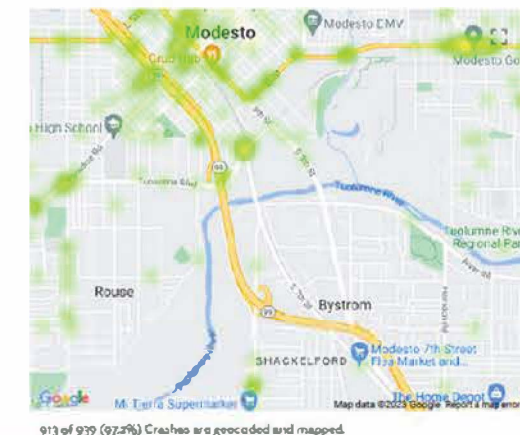
This report was created with the help of The Transportation Injury Mapping System (TIMS). TIMS has been developed by UC Berkeley SafeTREC to provide quick, easy and free access to California crash data, the Statewide Integrated Traffic Records System (SWITRS), that has been geo-coded by SafeTREC to make it easy to map crashes.

Date & Location
Date: 01/01/2018 - 12/31/2022
County: Stanislaus
City: Modesto

Filters
Bicyclist Crash:
Pedestrian Crash:

Result

Total Crashes: 939
Total Victims: 44 Killed, 8,940 Injured
State Highway: 309 (23.3%)
Ped Involved: 535 (57%)
Bike Involved: 406 (43.2%)
Motorcycle Involved: 4 (0.4%)



02 Engage the Community

We will conduct surveys, hold community meetings, and gather data to best understand the transportation needs of the community.

We will then use this information to develop a Summary Report that will be presented to the local community.



03 Write the Summary Report

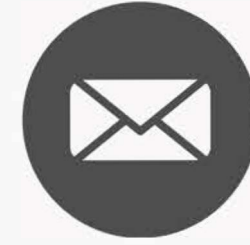
Our study is expected to provide insights and recommendations that will help to improve transportation efficiency, convenience and safety for everyone in the community with clean transportation options like, electric vehicle carshare, micro mobility like scooters, e-bikes and other options like ride on demand services.



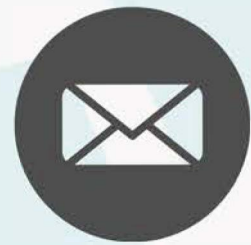
Contact Information



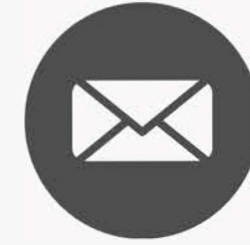
Ali Cooper
EVGide
Program Manager
ali@evigide.com



Edgar Garibay
Valley Improvement Projects
Project Manager
edgar@vip209.com



Sebastian Jones
MLK Committee
Board President
mlkcommitteinc@gmail.com



Nelson Gomez
South Modesto Business United
Board President
smbu95354@gmail.com
