

Santa Cruz County

Mitch Weiss
Interim Executive Director



Santa Cruz County Overview



Santa Cruz County is a diverse community of 267,551 residents situated at the northern tip of Monterey Bay, approximately 65 miles south of San Francisco, 35 miles north of Monterey, and 35 miles southwest of Silicon Valley.

Transportation Infrastructure within the County

Rail Corridor

Preserving the rail corridor and analysis of options.



Coastal Rail Trail

Planning, engineering, and construction of the Monterey Bay Sanctuary Scenic Trail - Coastal Rail Trail.



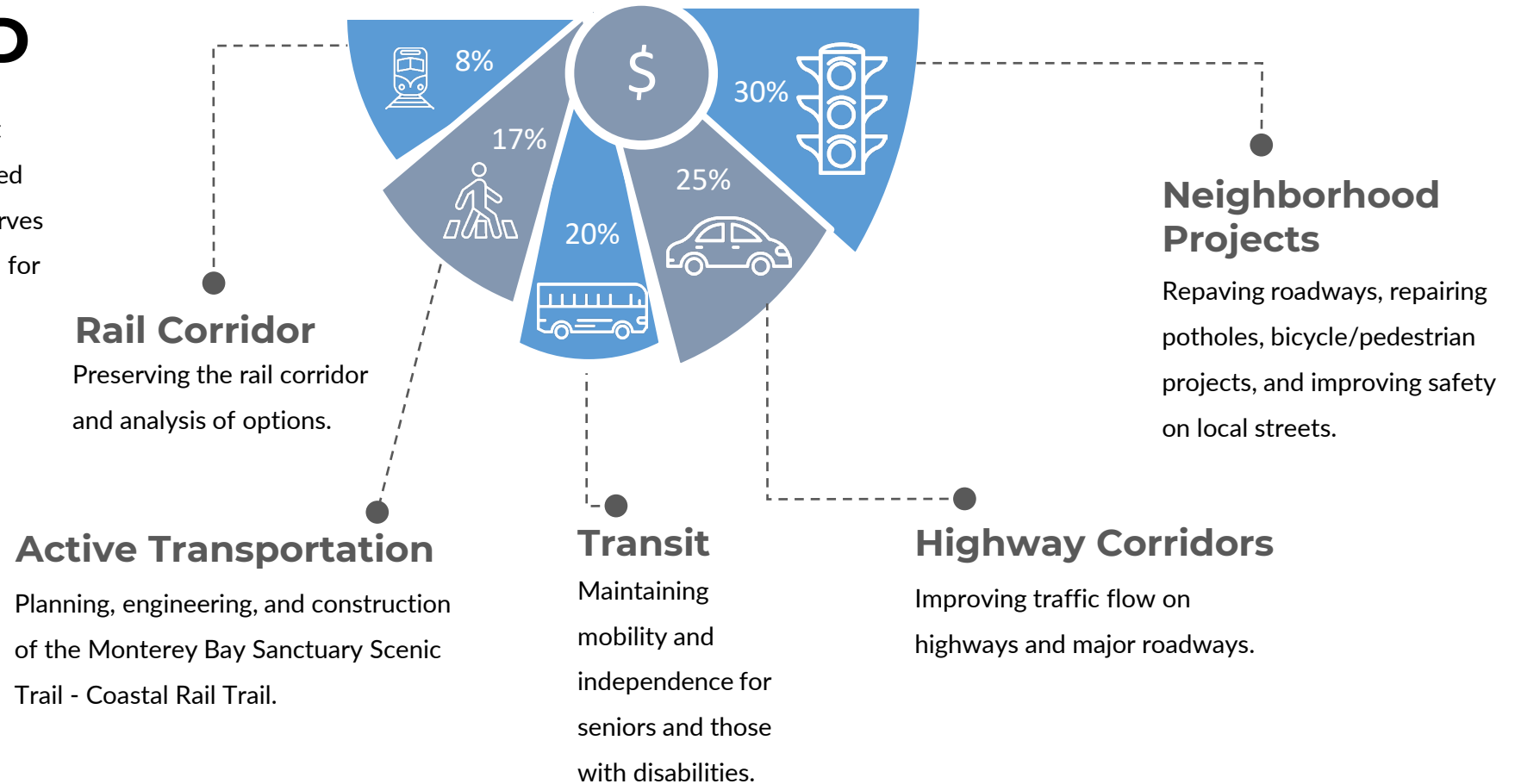
Highway Corridors

Improving traffic flow on highways and major roadways.



2016 Measure D

Santa Cruz County voters passed a half-cent sales tax in 2016. The measure was developed based on extensive public input. The RTC serves as the taxing authority. This has been critical for securing recent funding.



ACTIVE PROJECTS

Coastal Rail Trail



Segment Status

Creating a more connected, equitable, and sustainable Central Coast.

Project Information

The Coastal Rail Trail is the 32-mile spine of the larger Monterey Bay Sanctuary Scenic Trail Network (MBSST). Currently, 19 miles of projects are constructed or in various stages of development.



Zero-Emission Passenger Rail & Trail Project

Creating a more connected, equitable, and sustainable Central Coast.

Project Information

The project proposes new high-capacity, zero-emission passenger rail service and stations on approximately 22 miles of the Santa Cruz Branch Rail Line and 13 miles of Coastal Rail Trail Segments 13-20.

The project aims to take advantage of the publicly owned rail right-of-way to provide passenger rail service to connect the most populated areas of Santa Cruz County to each other and to the greater region as well as to provide integrated intercity travel options for riders on the Central Coast.



ACTIVE PROJECTS

Highway 1 Corridor Investment Program

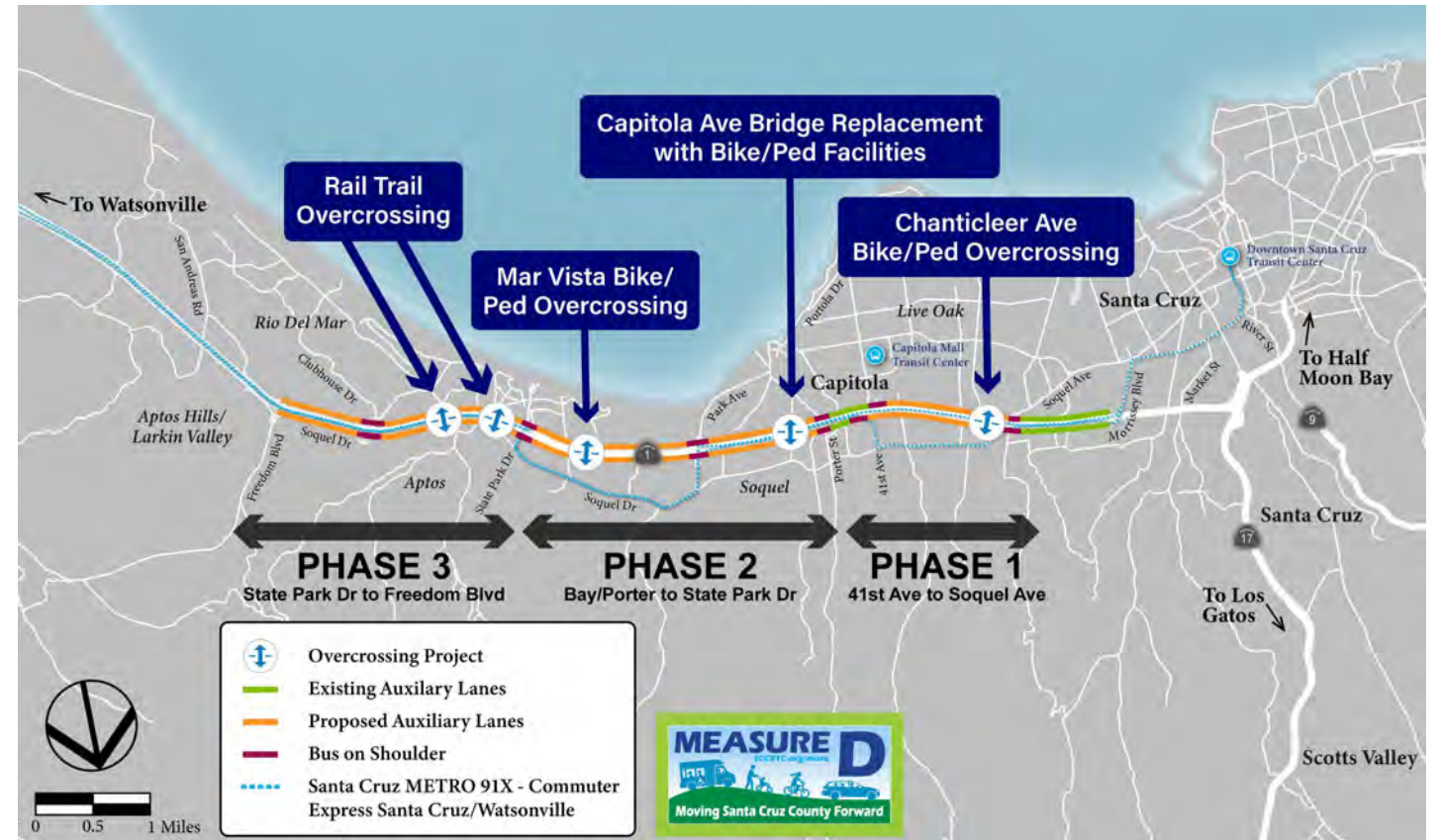


Project Update

Creating a more connected, equitable, and sustainable Central Coast.

Expanding Multimodal Access

Highway 1 is a physical barrier between east-west travel for cyclists and pedestrians in Santa Cruz County. This separation creates gaps in the region's bicycle and pedestrian network. The Highway 1 corridor investment program will improve neighborhood connectivity by constructing new pedestrian overcrossings over Highway 1. The highway will also be expanded to add auxiliary lanes and bus-on-shoulder facilities.



ACTIVE PROJECTS

Highway 1 Corridor Investment Program



Phase 1: Under Construction

*Creating a more connected, equitable,
and sustainable Central Coast.*

Project Description

- Northbound and southbound auxiliary lanes and bus-on-shoulder improvements between the 41st Avenue and Soquel Avenue/Drive interchanges
- Bicycle and pedestrian overcrossing at Chanticleer Avenue

Project Schedule

Construction expected to be completed in late 2024.



ACTIVE PROJECTS

Watsonville-Santa Cruz Multimodal Corridor Program



Thank You

