

2025 Active Transportation Program



Tab 17

Staff Recommendations
Statewide and Small Urban & Rural
Components

Summary of Recommendations



| | Statewide | Small Urban & Rural | Overall |
|------------------------|-------------------------------------|-------------------------------------|---------------------------------------|
| Available | \$84,350,000 | \$16,870,000 | \$168,700,000 |
| Projects Funded | 9 | 4 | 13 |
| Cut-off Score | 96 | 95 | N/A |
| Average Award | \$9,734,000 | \$12,211,000 | \$10,496,000 |
| DAC Projects | \$84.3 million for 9 projects, 100% | \$16.8 million for 4 projects, 100% | \$104.4 million for 13 projects, 100% |
| SRTS Projects | \$44.3 million for 5 projects, 55% | \$8.8 million for 2 projects, 50% | \$53.1 million for 7 projects, 54% |
| Counties Represented | 6 | 2 | 8 |

Current Funding



Projects Funded:

| CTC Application ID | Implementing Agency Name | Project Name | Total Project Cost | ATP Fund Request | Project Type | Final Score |
|---|--|--|--------------------|------------------|--|-------------|
| 5-Salinas, City of-1 | City of Salinas | John Street/Williams Road Safe Routes to Schools Project and Programming | \$ 9,955 | \$ 7,954 | Infrastructure + Non-Infrastructure - Medium | 100 |
| 6-Madera, City of-1 | City of Madera | Madera Citywide Safe Routes to School | \$ 7,756 | \$ 6,201 | Infrastructure - Medium | 99.5 |
| 6-Visalia, City of-2 | City of Visalia | Highland Community Connectivity Project | \$ 7,194 | \$ 5,470 | Infrastructure + Non-Infrastructure - Medium | 98 |
| 3-Grass Valley, City of-1 | City of Grass Valley | Wolf Creek Community and Connectivity Project | \$ 16,300 | \$ 12,990 | Infrastructure - Large | 98 |
| 7-San Gabriel Valley Council of Governments-1 | San Gabriel Valley Council of Governments (SGVCOG) | SAFE PATHS POMONA: At-Grade Pedestrian And Bike Safety | \$ 26,158 | \$ 20,162 | Infrastructure - Large | 97.5 |
| 7-Inglewood, City of-1 | City of Inglewood | Westchester/Veterans Station Multimodal Connection Project | \$ 9,013 | \$ 7,656 | Infrastructure - Medium | 97 |
| 6-Visalia, City of-4 | City of Visalia | Beyond Bike Lanes - Elevating Santa Fe Street | \$ 14,424 | \$ 11,390 | Infrastructure + Non-Infrastructure - Large | 96.5 |
| 7-Los Angeles County-1 | Los Angeles County Public Works | West Rancho Dominguez Walks: Providing Safer Access to Schools/Parks | \$ 9,990 | \$ 7,990 | Infrastructure - Medium | 96 |
| 10-Stanislaus Council of Governments-1 | Stanislaus Council of Governments | Church Street Mobility Enhancement Project | \$ 9,744 | \$ 7,795 | Infrastructure - Medium | 96 |
| 9-Big Pine Paiute Tribe of the Owens Valley-1 | Big Pine Paiute Tribe of the Owens Valley | Big Pine Paiute Tribal Active Transportation Plan | \$ 251 | \$ 251 | Plan | 95 |
| 1-Mendocino County-1 | Mendocino County | Covelo/Round Valley Safe Routes to School | \$ 6,181 | \$ 6,181 | Infrastructure - Medium | 95 |
| 9-Inyo County-1 | County of Inyo | Connecting Tecopa: Bicycle and Pedestrian Safety Corridor | \$ 9,877 | \$ 7,802 | Infrastructure - Medium | 95 |
| 6-Visalia, City of-3 | City of Visalia | Goshen Visalia Corridor Connection Project | \$ 43,300 | \$ 34,608 | Infrastructure + Non-Infrastructure - Large | 95 |




**9 PROJECTS
FUNDED IN
THE
STATEWIDE
COMPONENT**

- **Northern California**
 - 5 projects
 - \$37,863,000 in funding
- **Southern California**
 - 8 projects
 - \$63,357,000 in funding




**4 PROJECTS
FUNDED IN THE
Small Urban &
Rural
COMPONENT**

City of Salinas:

John Street / Williams Road Safe Routes to Schools Project and Programming

TOTAL PROJECT COST:
\$9,955,000

TOTAL ATP COST:
\$7,954,000

- Economically disadvantaged community
- Provides safe connection for bicyclists and pedestrians to key destinations.
- Provides education and encouragement programming

KEY OUTPUTS INCLUDE:

- 11 New Crosswalks
- 15 Rectangular Rapid Flashing Beacons
- 0.9-mile Class I multi-use path
- 1.0-mile Class II buffered bike lane
- 0.23-mile one-way Class IV bikeways

Current Condition

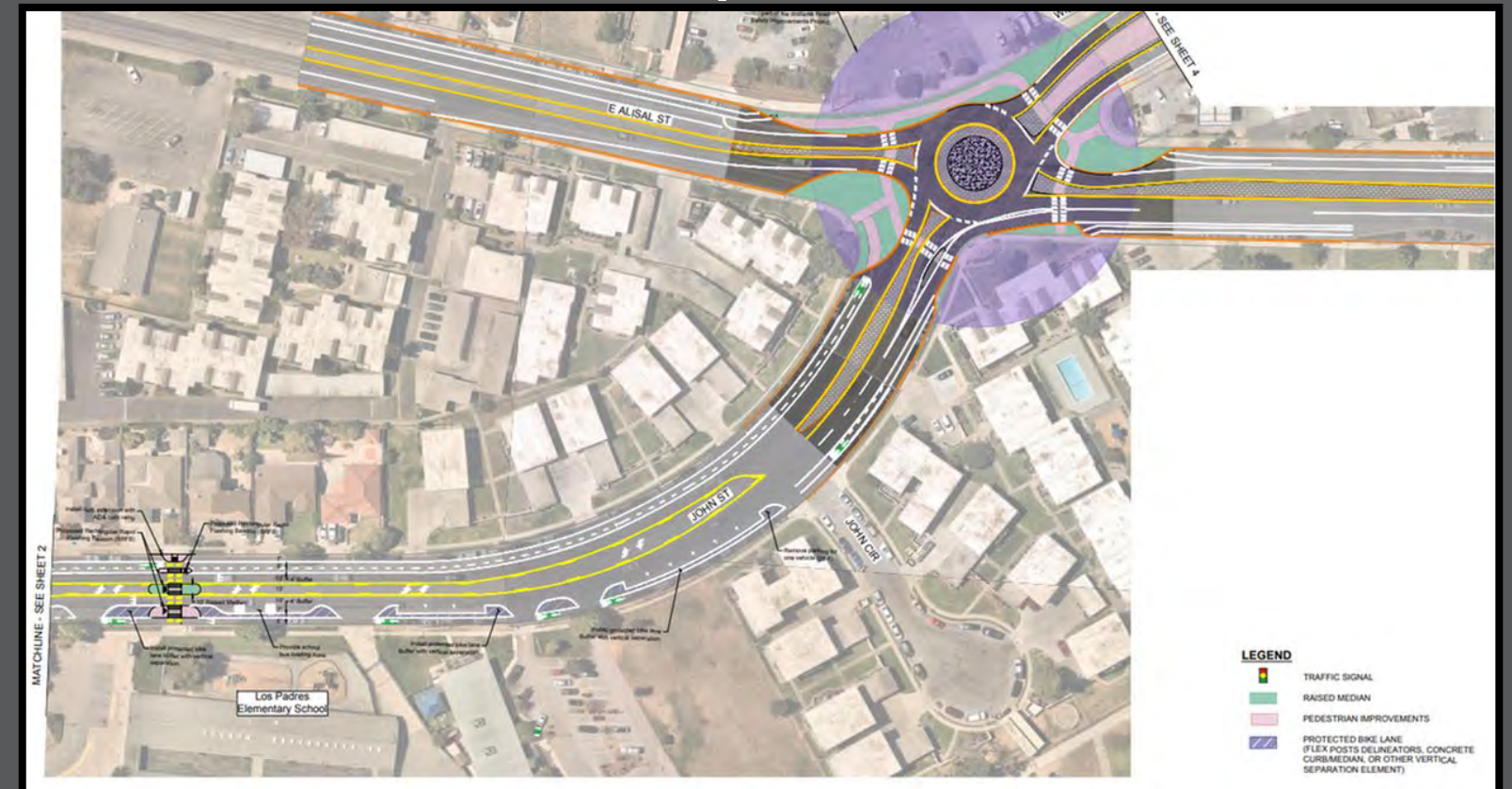
Cycle 7
SITE VIST



John St & E Alisal St,
facing south

- There are no bicycle facilities or bicycle protection features in this intersection.
- Crosswalks are not high-visibility ladder crosswalks and are faded.
- Pedestrians cross to islands in most cases, necessitating multiple crossings
- Crosswalks across slip lanes do not have pedestrian crossing timers and rely on drivers to obey yield signage
- Slip lanes encourage higher speeds from turning vehicles

Proposed



City of Inglewood:

Westchester / Veterans Station Multimodal Connection Project

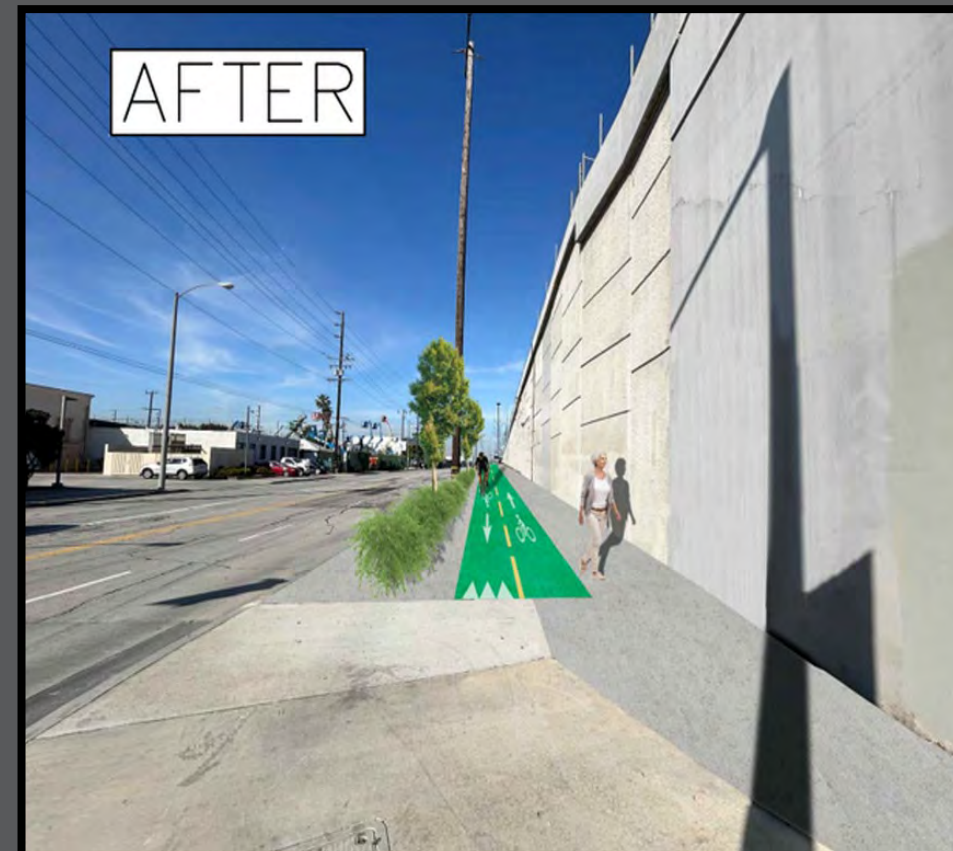
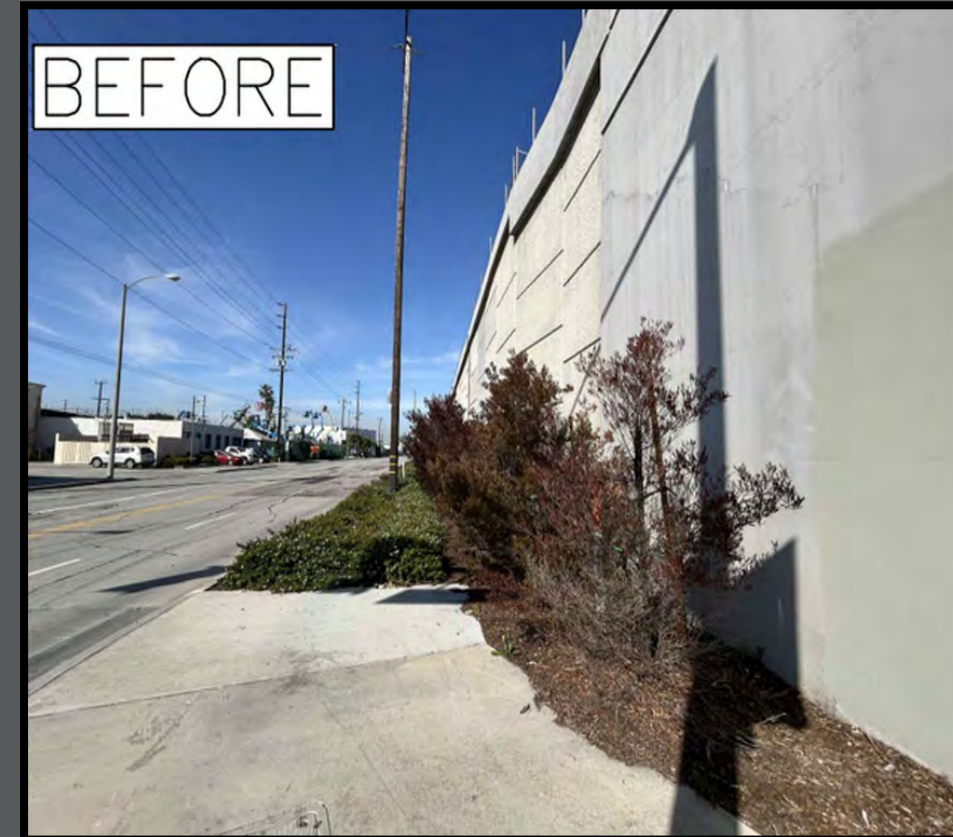
TOTAL PROJECT COST:
\$9,013,000

TOTAL ATP COST:
\$7,657,000

- Community challenges include linguistic isolation and high groundwater threats.
- This project bridges the accessibility gap to public transportation and other key destinations.
- Creates separated bikeway and pedestrian pathways.

KEY OUTPUTS INCLUDE:

- 14 Curb ramps
- 11 High-visibility crosswalks
- 0.9-Mile bicycle and pedestrian facilities
- 2,850 Square feet of raised curb
- 1 Traffic Signal



Big Pine Paiute Tribe of the Owens Valley:

Big Pine Paiute Tribal Active Transportation Plan

Cycle 7
SITE VIST

TOTAL PROJECT COST:
\$251,000

TOTAL ATP COST:
\$251,000

- The Tribe's reservation is divided by State Route 395.
- Plans for increasing safety while walking and biking to key destinations.
- Aims to create a comprehensive active transportation strategy.

KEY OUTPUTS INCLUDE:

- Increased walking and biking
- Improved access to safety
- Enhanced mobility
- Community health
- Economic opportunity accessibility
- Environmental sustainability



City of Visalia:

Highland Community Connectivity Project

Cycle 7
SITE VIST

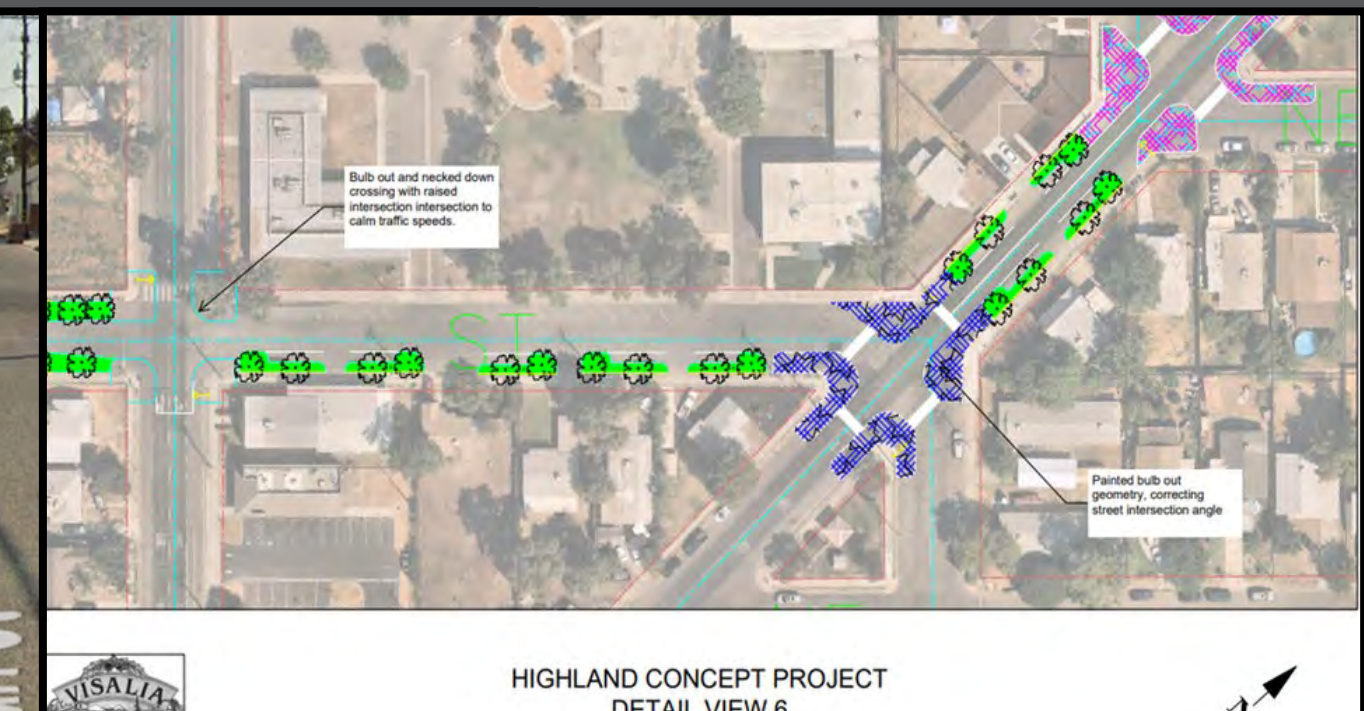
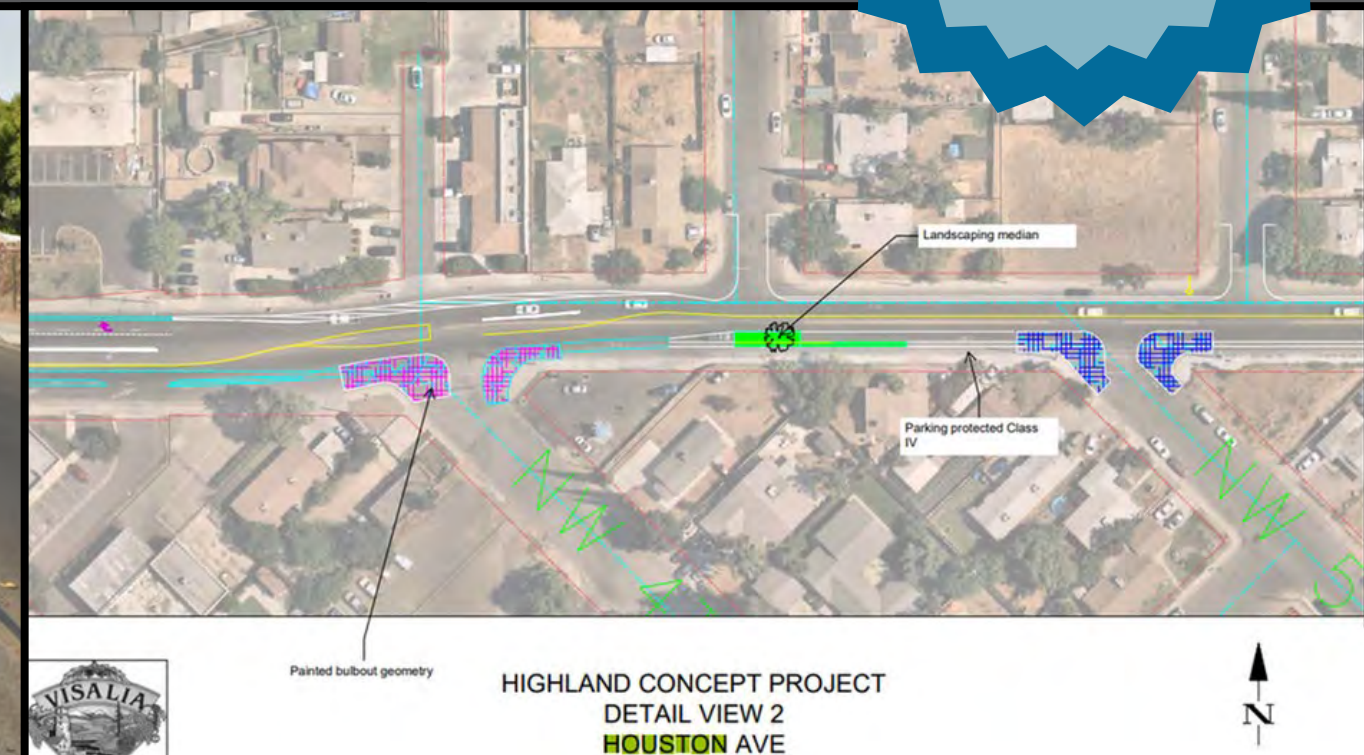
TOTAL PROJECT COST:
\$7,194,000

TOTAL ATP COST:
\$5,470,000

- Project serves an area of California with the highest poverty rates.
- The community is bifurcated by State Route 63.
- This project will add infrastructure to slow traffic, shorten pedestrian and cyclist crossing distances.

KEY OUTPUTS INCLUDE:

- Traffic calming measures
- 20 concrete bulb-out curb returns
- 8 painted bulb-out configurations
- Protected intersection
- 3000 ft of Class IV bike lanes
- One traffic circle
- Two raised intersections



What would the staff recommendations look like had the full funding been available? (additional \$400M)



| Component | Additional Projects Funded |
|---------------------|----------------------------|
| Statewide | 19 |
| Small Urban & Rural | 3 |



City of Oakland Department of Transportation: Franklin Complete Streets Project



City of Chula Vista: Anita Street and Industrial Boulevard Bicycle and Pedestrian Improvements



City of Shasta Lake: Link Shasta Active Transportation Network



**City of Stockton: Citywide
Stockton Bicycle-
Pedestrian Connectivity
Project – W. 8th
Street/Manthey
Road/Houston Avenue
Phase**



Tulare County: Cutler-Orosi Bicycle and Pedestrian Connectivity Improvements Project



Legend

-  Group 1
-  Group 2

California State Parks, Esri, TomTom, Garmin, FAO, NOAA, USGS, EPA, USFWS, Esri, CGIAR, USGS

Thank You



- **Laurie Waters**

California Transportation Commission
Laurie.Waters@catc.ca.gov
(916) 651-6145

- **Jaeden Gales**

California Transportation Commission
Jaeden.Gales@catc.ca.gov
(916) 720-6581

- **Emma Mallonee**

Caltrans
Emma.Mallonee@dot.ca.gov
(916) 628-3591