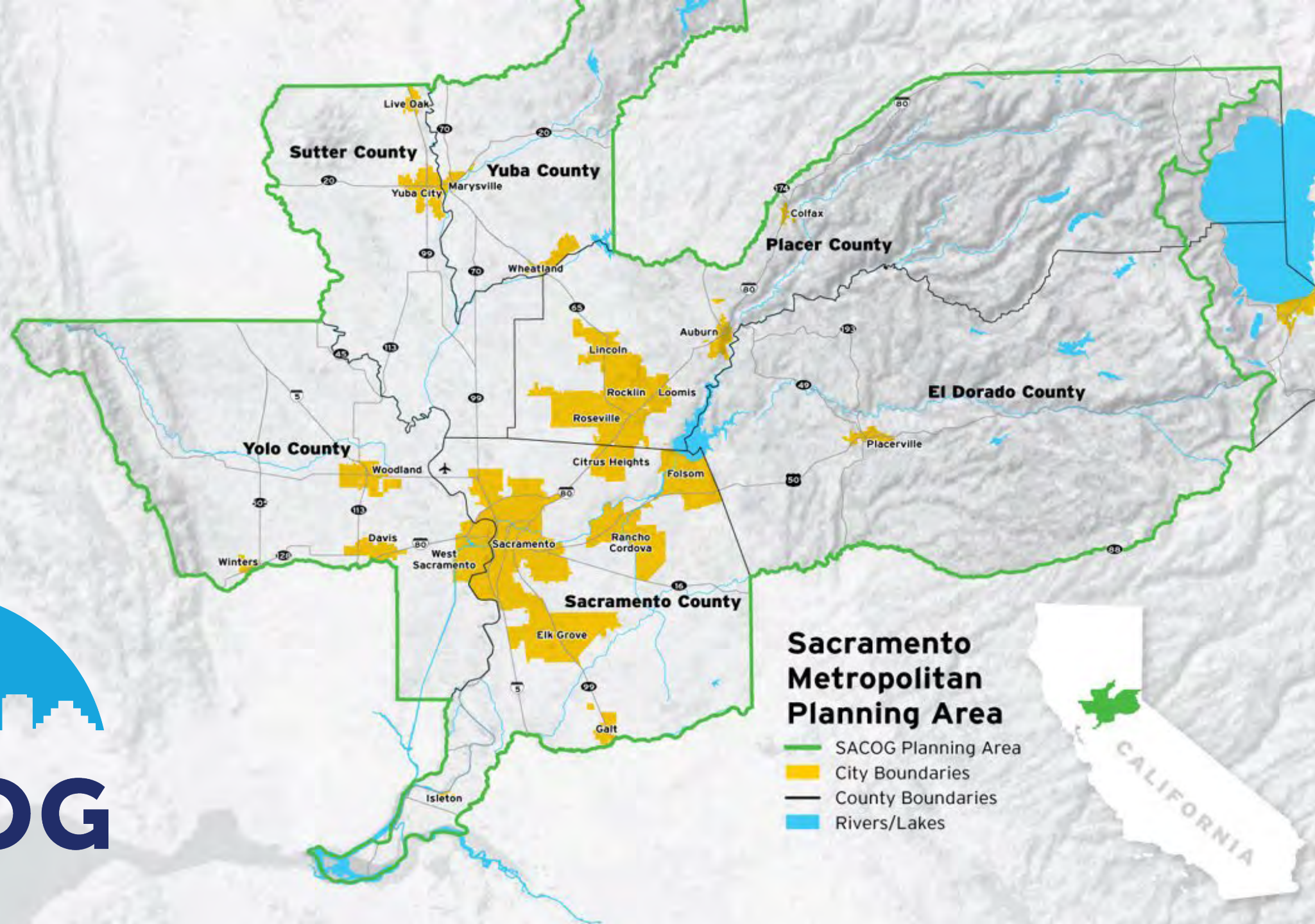


Welcome to the SACOG Region!







[Contact Us](#)

[Go!](#)

[Home](#)

[About ▾](#)

[Board ▾](#)

[Calendar](#)

[Projects ▾](#)

[News & Notices](#)

[Contact Us](#)



Capital Area Regional Tolling Authority

The Capital Area Regional Tolling Authority (CARTA) develops and operates toll facilities in the Sacramento region.



Q TYPE TO SEARCH

YUBA COUNTY AWARDED \$48 MILLION GRANT FOR MASSIVE DRAINAGE IMPROVEMENT IN OLIVEHURST

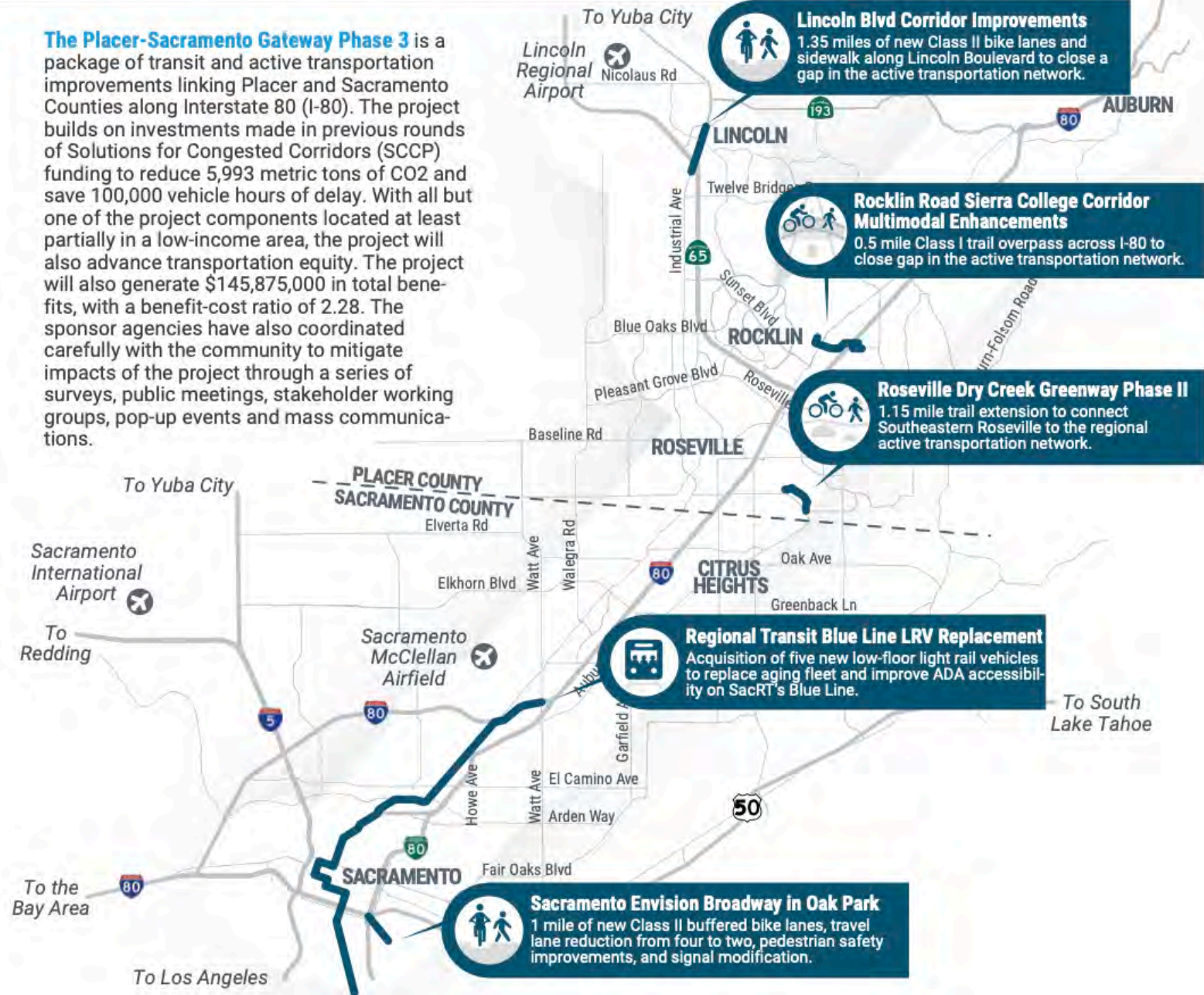
HOME > MORE NEWS > YUBA COUNTY AWARDED \$48 MILLION GRANT FOR MASSIVE DRAINAGE IMPROVEMENT IN OLIVEHURST



PLACER-SACRAMENTO GATEWAY PHASE 3 FACT SHEET

Auburn Municipal Airport  To Reno

The Placer-Sacramento Gateway Phase 3 is a package of transit and active transportation improvements linking Placer and Sacramento Counties along Interstate 80 (I-80). The project builds on investments made in previous rounds of Solutions for Congested Corridors (SCCP) funding to reduce 5,993 metric tons of CO2 and save 100,000 vehicle hours of delay. With all but one of the project components located at least partially in a low-income area, the project will also advance transportation equity. The project will also generate \$145,875,000 in total benefits, with a benefit-cost ratio of 2.28. The sponsor agencies have also coordinated carefully with the community to mitigate impacts of the project through a series of surveys, public meetings, stakeholder working groups, pop-up events and mass communications.



GRANT LINE ROAD SAFETY AND FREIGHT MOBILITY PROJECT

2024 CALIFORNIA TRANSPORTATION COMMISSION
FACT SHEET FOR SB 1 TCEP CYCLE 4

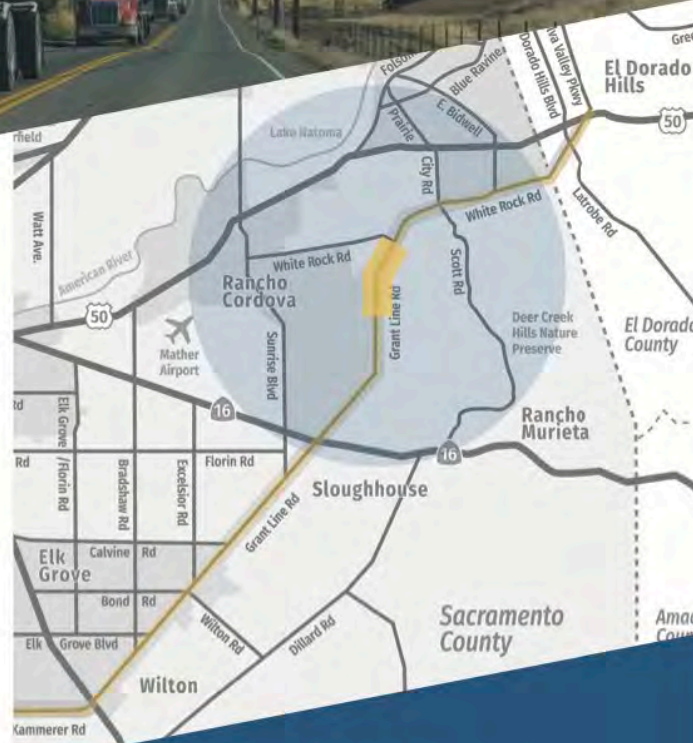


BACKGROUND

The Capital SouthEast Connector Joint Powers Authority (Connector JPA), in collaboration with Sacramento County and the City of Rancho Cordova, proposes the Grant Line Road Safety and Freight Mobility Project for Cycle 4 of the California Trade Corridor Enhancement Program that includes a funding request of \$20 million.

The Project will reconstruct 3.6 miles of Grant Line Rd. to a multi-modal corridor using a “fix it first, fix it right” approach that will rehabilitate the existing pavement, correct geometric deficiencies, improve traffic operations by modifying existing intersections, and construct a separated Class I multi-use path.

Our strategy focuses on a phased implementation, beginning with the design and right-of-way acquisition for the ultimate 4-lane facility while advancing construction of an initial two-lane phase from Chrysanthy Blvd. to White Rock Rd. This project advances the long-term vision of Capital Southeast Connector Expressway, while adapting to the immediate funding landscape and advancing the project to maximize federal, state, and regional support.



PROJECT QUICK FACTS



Figure 18: Example Permanent Trip to Green Infrastructure

SACRAMENTO

Sacramento expanding rapid bus network to South Sacramento

by: [Matthew Nibert](#)
 Posted: Apr 11, 2024 / 10:23 AM PDT
 Updated: Apr 11, 2024 / 01:10 PM PDT



(SacRT)



The Heights on Stockton Boulevard, an affordable housing community located at 5200 Prickly Pear Ave just East of Stockton Blvd, is well under way and set to expect its first residents in early 2024! [Mercy Housing California](#) (MHC) and [Mogavero Architects](#) in partnership with the City of Sacramento and the [Sacramento Housing and Redevelopment Agency](#) are

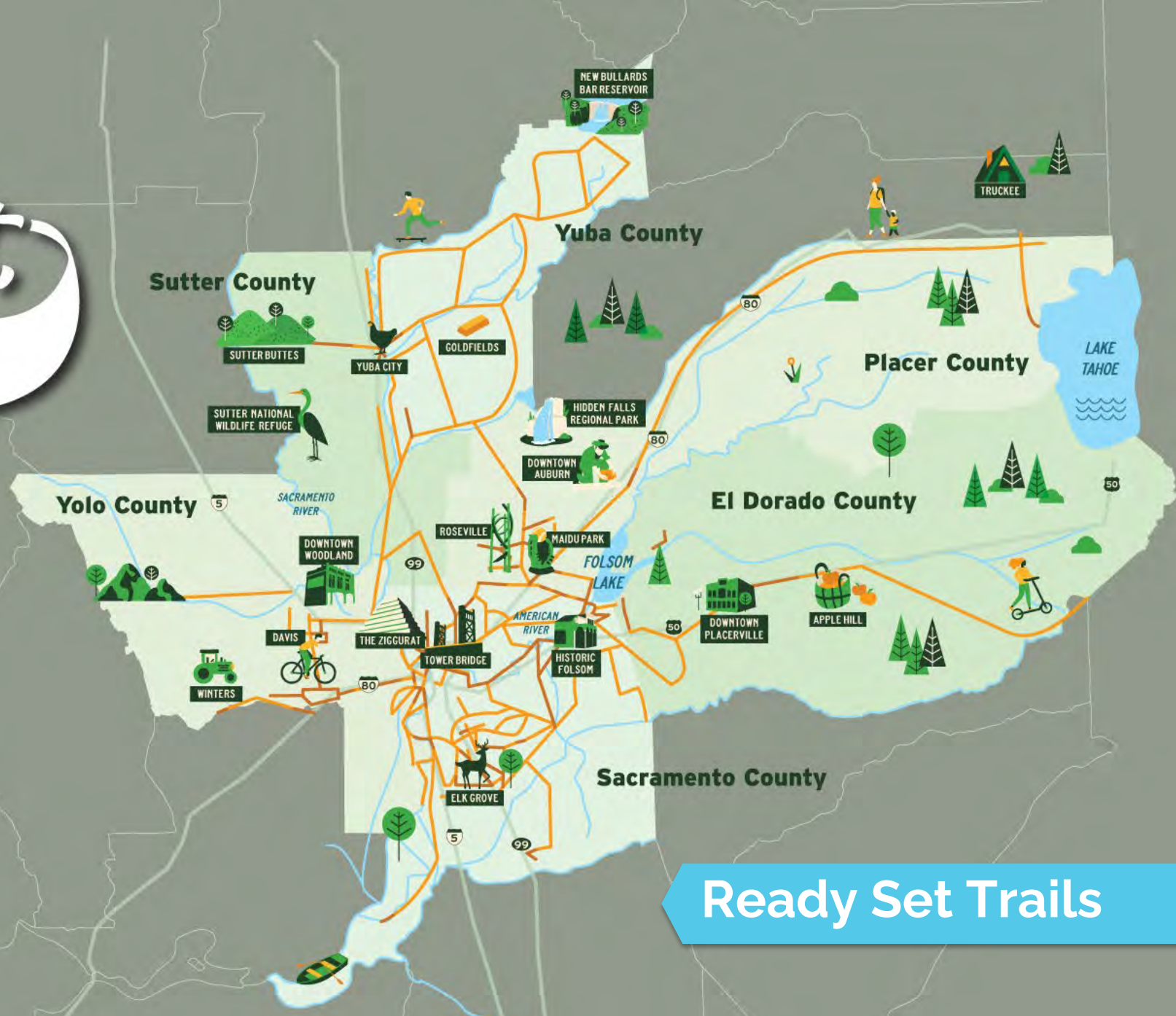


I Street Bridge



Ready, Set, TRAILS!

VISION FOR A CONNECTED
SACRAMENTO REGION



Ready Set Trails

Green Means Go



WELCOME TO
LITTLE
SAIGON

SAIGON
Great Wall

Oil Change
Valvoline



GREEN
MEANS GO





BLUEPRINT

METROPOLITAN TRANSPORTATION PLAN
SUSTAINABLE COMMUNITIES STRATEGY

Race Equity and Inclusion Initiative

RACIAL EQUITY ACTION PLAN

ADOPTED: OCTOBER 20, 2022



Sacramento To Be Home To Truck Charging Depot



More than 100 acres of land near Sacramento International Airport will be home to a massive electric truck charging depot. The depot will be powered by a large photovoltaic field supplying about two-thirds of the power. This will be the first in the Sacramento region, serving local freight haulers and eventually those using trucks to move goods from ports to inland distribution centers. The depot will serve as well as other shippers in the area. The full story can be found here.

Sparkz to begin battery manufacturing this year in Sacramento

✉ [f](#) [in](#) [X](#) [🖨](#) [🔗](#) Unlock URL [📄](#) Order Reprints [📁](#) Gift this Article



JASON KAMAUOHA
VP, SACRAMENTO
RELATIONSHIP
MANAGER

TALK TO US

Bank of Marin
Member FDIC

BOSCH ROSEVILLE INVESTMENT

- ▶ Creating Silicon Carbide Power Semiconductors
- ▶ Largest Bosch Global Factory Of Its Type
- ▶ Supports U.S. Supply Chain
- ▶ Up To 1,000 Construction Jobs
- ▶ Up To 700 STEM-Based Jobs

3
KCRA



YOUTH
LEADERSHIP
ACADEMY

