

## **MEMORANDUM**

**To:** CHAIR AND COMMISSIONERS  
CALIFORNIA TRANSPORTATION COMMISSION

**CTC Meeting:** December 4-5, 2025

**From:** STEVEN KECK, Chief Financial Officer

**Reference Number:** 2.3c., Action Item

**Prepared By:** Eric Souza, Chief  
Division of Design

**Subject:** **RELINQUISHMENT RESOLUTION**

### **ISSUE:**

Should the California Transportation Commission (Commission) approve the California Department of Transportation's (Department) request for a relinquishment resolution that will transfer highway facilities no longer needed for the State Highway System to the local agency identified in the summary?

### **RECOMMENDATION:**

The Department recommends that the Commission approve the relinquishment resolution, summarized below, that will transfer highway facilities no longer needed for the State Highway System to the local agency identified in the summary. It has been determined by the Department that each facility in the specific relinquishment resolution summarized below may be disposed of by relinquishment. Upon the recording of the approved relinquishment resolution in the county where the facilities are located, all rights, title, and interest of the State in and to the facilities to be relinquished will be transferred to the local agency identified in the summary. The facilities are safe and drivable. The local authorities have been advised of the pending relinquishment a minimum of 90 days before the Commission meeting pursuant to Section 73 of the Streets and Highways Code. Any exceptions or unusual circumstances are described in the individual summary.

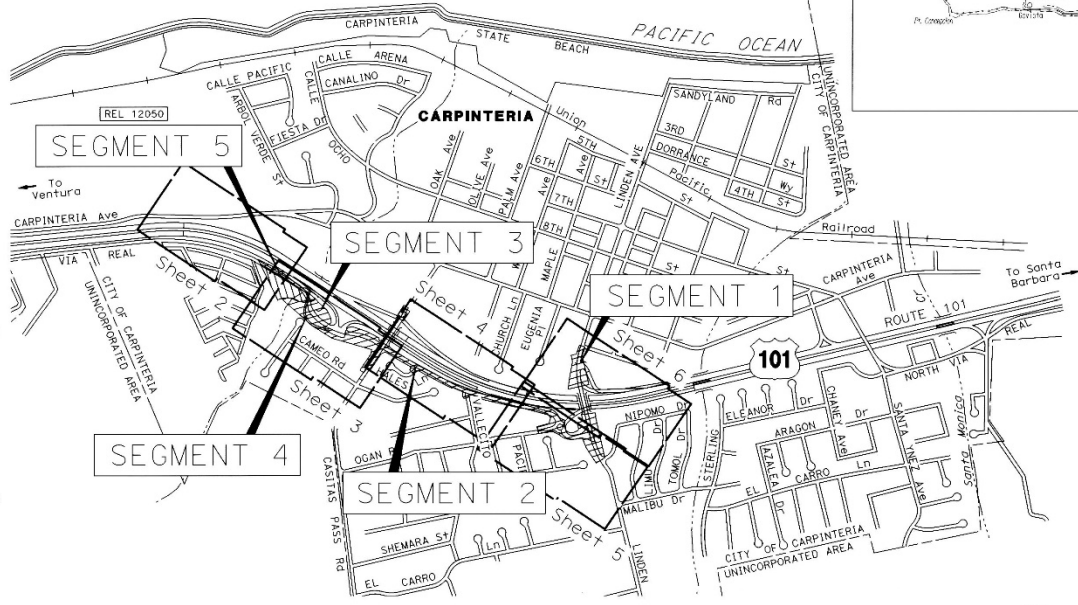
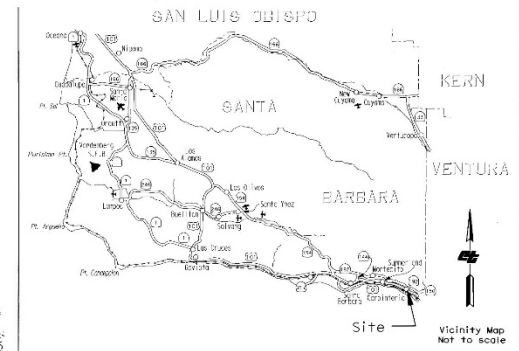
**RESOLUTION:**

Resolution R-4126 – 05-SB-101-PM 2.3/3.2  
(Request No. 12050) – 4 Segments

Relinquishes right of way consisting of collateral and nonmotorized transportation facilities in the city of Carpinteria (City) along United States Highway 101 on Via Real, Casitas Pass Road, Ogan Road, and Linden Avenue, under the terms and conditions as stated in the freeway agreement dated February 13, 2013. The City, by letter dated October 9, 2025, agreed to waive the 90-day notice requirement and accept title upon relinquishment by the State. See Attachments 1A, 1B, 1C, 1D, 1E, and 1F for the relinquishment location.

Attachments 1A, 1B, 1C, 1D, 1E, and 1F – Relinquishment Location Maps

# COUNTY OF SANTA BARBARA CITY OF CARPINTERIA



- Abbreviations**
- CF Calculated from
  - EA Expenditure authorization
  - FA# Federal aid number
  - FB Caltrans Field Book
  - ETC From true corner
  - LT Left
  - Inst. Instrument
  - POC Point on curve
  - POT Point on tangent
  - O.R. Official Records
  - RT Right

**Survey Note**  
Points are found per their respective Caltrans Field Book, as noted in each point name, except centerline reference monuments are found per R9.

- References**
- Caltrans**
- AB Design: Document Retrieval System (DBS), As built plans, roadway, Contract No 54-SVC2, SB-101-1.6/5.1, CCA date 1/26/1953; Notes: 1) where illegible, compared to R/W record maps. 2) Sheet 41 shows right of way monuments set. Surveys: 'H' 1952 center line alignment, reestablished with tangent curves per R9.
  - "H" Surveys: Right of Way Record Maps, SB-01-PM2.7, 2.9, 3.1 & 3.1a, filenames sb101pm0027\_99.pdf, sb101pm0029\_99.pdf, sb101pm0031\_99.pdf and sb101pm0031a\_99.pdf.
  - SB101 Surveys: Center line reference monument book, page for SB-101-1.9/5.6, September 1965, Filename SB101.pdr.
  - SFA Maintenance: Supplemental Freeway Agreement with County of Santa Barbara, 4/19/1965.

- County Recorder Maps**
- R4 Book 4, pages 23-26 State Highway Monumentation Maps, 1/24/1984
  - R7 Book 7, pages 1-5 State Highway Maps, Relinquishment 1683, 3/3/1970
  - R9 Book 9, pages 67-71 State Highway Maps, Centerline Retracement, year 2025
  - R10 Book 10, page 100 Maps and Surveys (See also Maps & Surveys 11/101)
  - R31 Book 31, pages 62-63 Parcel Maps
  - R32 Book 32, pages 38-39 Parcel Maps
  - R34 Book 34, page 59 Records of Surveys
  - R34B Book 34, page 90 Records of Surveys
  - R40 Book 40, pages 65-66 Maps
  - R59 Book 59, pages 8-10 Maps
  - R60 Book 60, page 17 Records of Surveys
  - R61 Book 61, page 14 Records of Surveys
  - R74 Book 74, pages 32-33 Maps
  - R94 Book 94, pages 5-6 Maps
  - R117 Book 117, page 15 Records of Surveys
  - R123 Book 123, pages 69-70 Maps
  - R183 Book 183, pages 69-70 Maps

- County Recorder Documents**
- D120 5/28/1952, 1071 O.R. 163, Grant Deed
  - DD120 12/21/1966, 2175 O.R. 1105, Director's Deed 120-1-DD to County of Santa Barbara
  - D123 11/25/1953, 1195 O.R. 272, Final Order of Condemnation
  - D125 1/16/1953, 1191 O.R. 273, Final Order of Condemnation
  - D127 5/18/1953, 1152 O.R. 451, Grant Deed
  - DD132 3/4/1954, 1221 O.R. 460, Director's Deed
  - D136 8/19/1952, 1088 O.R. 441, Grant Deed
  - D137-1 5/20/1952, 1089 O.R. 449, Grant Deed
  - D137-2 6/13/1952, 1074 O.R. 67, Grant Deed
  - D1354 10/28/1955, 1343 O.R. 383, Relinquishment 1354-1
  - D1683 5/26/1970, 2312 O.R. 1065, Relinquishment
  - D11443 2/8/2018, 2018-0005259 O.R., Amended Final Order of Condemnation
  - DE11443 7/27/2018, 2018-0031635 O.R., Director's Deed Easement 11443-01-01
  - DD11443 8/29/2024, 2024-0029829 O.R., Correction Deed for Director's Deed 11443-01-02 to City of Carpinteria
  - D11468 4/29/2013, 2013-0028280 O.R., Easement Deed 11468-1 for soundwall purposes
  - D11477 6/25/2013, 2013-0062781 O.R., Grant Deed 11477-1

**County Surveyor**  
IT Intersection Ties for (R59), Tract 10138  
CR Corner Record Document Number 5003, 1/31/2016

### SURVEYOR'S STATEMENT

THIS MAP CORRECTLY REPRESENTS A SURVEY MADE BY ME OR UNDER MY DIRECTION IN CONFORMANCE WITH THE REQUIREMENTS OF THE PROFESSIONAL LAND SURVEYORS' ACT AT THE REQUEST OF THE CALIFORNIA DEPARTMENT OF TRANSPORTATION IN JUNE 2024.

*Adrian Foster*  
PROFESSIONAL LAND SURVEYOR



March 17, 2025  
DATE

### COUNTY RECORDER'S STATEMENT

FILE NO. 2025-0007480  
FILED THIS 15th DAY OF March, 2025.  
AT 2:57 O'CLOCK P.M. IN BOOK 9 OF STATE HIGHWAY MAPS AT PAGE 72-77 AT THE REQUEST OF THE CALIFORNIA DEPARTMENT OF TRANSPORTATION.

JOSEPH E. HOLLAND  
COUNTY RECORDER  
BY *Brenda Serrano*  
DEPUTY COUNTY RECORDER

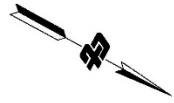
NO FEE PER GOVERNMENT  
CODE SECTION 6103

NOTES: The State of California or its officers or agents shall not be responsible for the accuracy or completeness of digital images of this map.

NOTE: The State's rights are not extinguished until recordation of related California Transportation Commission resolution.

<p><b>NOTES</b></p> <p>Coordinates and bearings are on NAD83 (1983) Epoch 1984.05 Zone 5. Distances and stationing are grid distances. Division by 0.99994491 to obtain ground distances (FSM-137, page 560). All distances are in U.S. survey feet unless otherwise noted.</p>		<p>STATE OF CALIFORNIA CALIFORNIA STATE TRANSPORTATION AGENCY DEPARTMENT OF TRANSPORTATION <b>RIGHT OF WAY RELINQUISHMENT MAP</b> Relinquishment No. 12050</p>													
<p><b>LEGEND</b></p> <ul style="list-style-type: none"> <li>Access Prohibited</li> <li>Access SuperseDED</li> <li>Access Relinquished</li> <li>Existing R/W SuperseDED</li> <li>Indicates Radial bearing</li> <li>Indicates Found Monument unless otherwise noted</li> <li>Possibly Destroyed</li> <li>Indicates calculated point. (Does not imply monument set)</li> <li>Portion to be Relinquished</li> </ul>		<p>NO SCALE</p> <p>PROJECT ID: 0500000543 EAG14482U DRAFTED BY: A. Foster CHECKED BY: Modita, J. Nelson</p> <p><b>STATE HIGHWAY MAP BOOK 9, PAGE 72</b></p> <table border="1"> <tr> <td>DISTRICT</td> <td>COUNTY</td> <td>ROUTE</td> <td>SHEET PW</td> <td>SHEET NO.</td> <td>TOTAL SHEETS</td> </tr> <tr> <td>5</td> <td>SB</td> <td>101</td> <td>2,3-3,2</td> <td>1</td> <td>6</td> </tr> </table>		DISTRICT	COUNTY	ROUTE	SHEET PW	SHEET NO.	TOTAL SHEETS	5	SB	101	2,3-3,2	1	6
DISTRICT	COUNTY	ROUTE	SHEET PW	SHEET NO.	TOTAL SHEETS										
5	SB	101	2,3-3,2	1	6										

COUNTY OF SANTA BARBARA  
 CITY OF CARPINTERIA  
 Rancho el Rincón (Arrellanas)



NOTE: The State of California or its officers or agents shall not be responsible for the accuracy or completeness of digital images of this map.

115 RS 70

121-00  
 10/7/1952, 1101 O.R. 399

FB3679-145  
 6x6 concrete  
 122+60.89 89.46 LT "H"  
 (122+60.44 89.30 LT AB)  
 Used to reestablish easterly line of (D120)

FB4643-525  
 2" ip w/brass disk-see 2786 per (R117)  
 S34°47'17"E 0.12' FIC. Reestablished at intersection  
 of measured offset and easterly line of (D120)  
 124+85.65 92.79 RT "H"  
 (124+85.16 92.79 RT AB)  
 PM2.3

SB101 25-3  
 brass disk in concrete  
 127+17.10 0.04 RT "H"  
 Point on Tangent, M&R9  
 N24°14'31"W  
 474.10'  
 N28°46'29"W  
 1,841.75'  
 M&R9

EXISTING R/W  
 E'ly line of (D120)

REL 12050  
**SEGMENT 5**  
 Collateral

FB4643-715  
 1/2" ip w/pp-1s3873 per (R117)  
 127+02.67 224.99 RT "H"  
 Used to reestablish easterly line of (D120)

FB4643-804  
 1/2" ip w/tag-1s3873

117 RS 15  
 (R117)

Carpinteria Avenue

101

Via Real

4 SHMMB 23

N68°00'35"W  
 734.83'  
 M&R9  
 "H" 112+09.87 BC M&R9  
 SB101 25-1  
 brass disk in concrete  
 112+09.29 0.10 RT "H"  
 Point on Tangent, M&R9

PM2.15  
 116+09.98 132.84 RT "H"

PM2.24  
 120+15.76 98.41 RT "H"

**NOTES**  
 Coordinates and bearings are on  
 CGS83 (1982) Epoch 1991.35 Zone 5,  
 distances and stationing are grid  
 distances.  
 Divide by 0.9999491 to obtain  
 ground distances (7000-131, page  
 260).  
 All distances are in U.S. survey  
 feet unless otherwise noted.

**LEGEND**

----- Access Prohibited  
 - - - - - Access Superseaded  
 - - - - - Access Relinquished  
 - - - - - Existing R/W Superseaded

(B) Indicates Radial bearing  
 Indicates found Monument  
 unless otherwise noted  
 possibly destroyed  
 Indicates calculated  
 point. (Does not imply  
 monument set)

/// Portion to be relinquished

STATE OF CALIFORNIA  
 CALIFORNIA STATE TRANSPORTATION AGENCY  
 DEPARTMENT OF TRANSPORTATION

**RIGHT OF WAY**

**Relinquishment Request No. 12050**

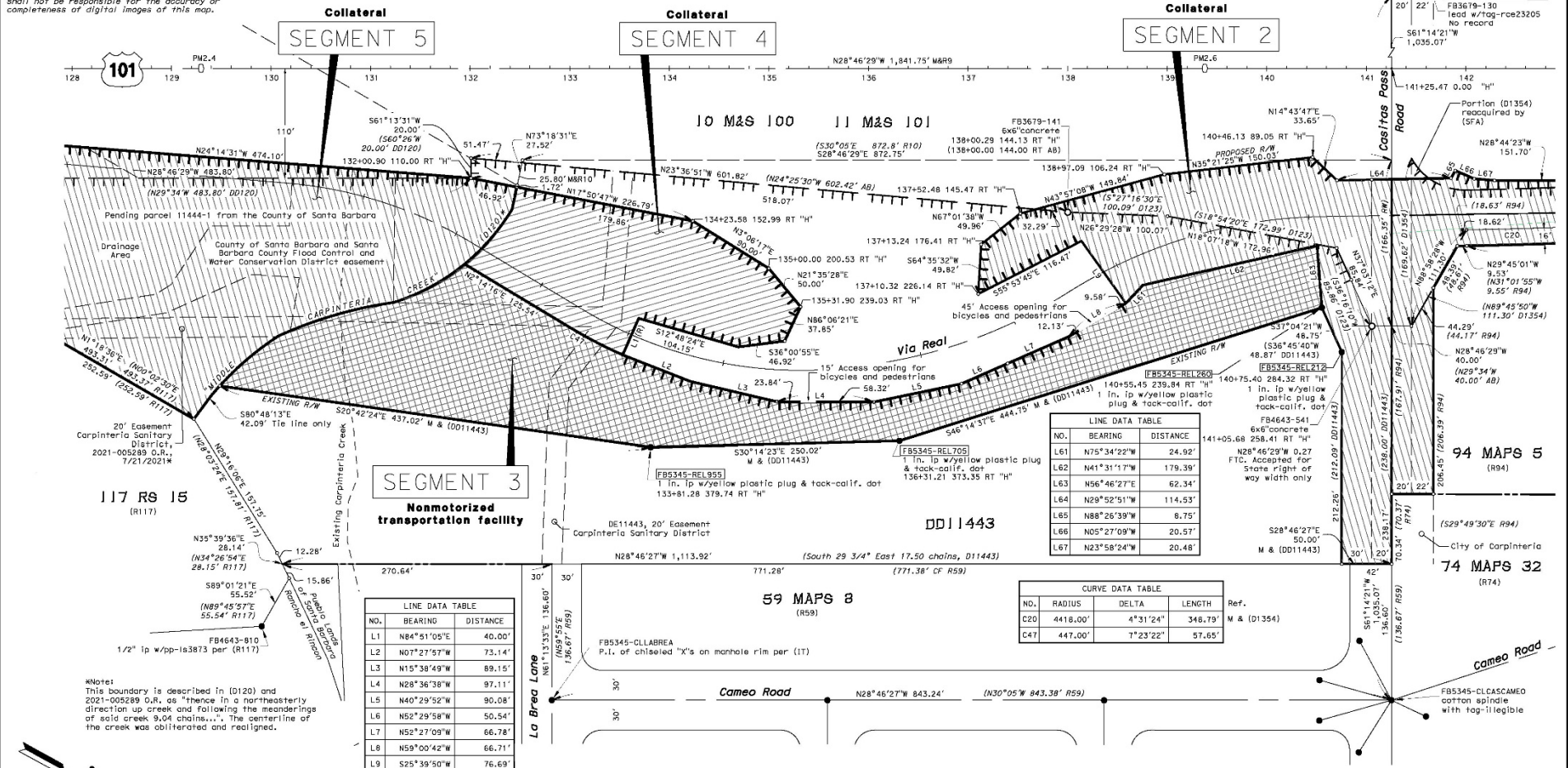
FULL SIZE MAP SCALE: 1" = 50'

FEET 0 25 50 100 150

DATE: 05-24-2024 PROJECT ID: 0500000543  
 DRAFTED BY: A. Foster CHECKED BY: J. Macrid

STATE HIGHWAY	MAP BOOK	SHEET NO.	TOTAL SHEETS
5	SB	101	2,3
			2
			6

NOTE: The State of California or its officers or agents shall not be responsible for the accuracy or completeness of digital images of this map.



NO.	BEARING	DISTANCE
L1	N84°51'05"E	40.00'
L2	N07°27'57"W	73.14'
L3	N15°39'49"W	89.15'
L4	N28°36'38"W	97.11'
L5	N40°29'52"W	90.08'
L6	N52°29'58"W	50.54'
L7	N52°27'09"W	66.78'
L8	N59°00'42"W	66.71'
L9	S25°39'50"W	76.69'

NO.	BEARING	DISTANCE
L61	N75°34'22"W	24.92'
L62	N41°31'17"W	179.39'
L63	N56°46'27"E	62.34'
L64	N29°52'51"W	114.53'
L65	N88°26'39"W	8.75'
L66	N05°27'09"W	20.57'
L67	N23°58'24"W	20.48'

NO.	RADIUS	DELTA	LENGTH	Ref.
C20	4418.00'	4°31'24"	348.79'	M & (D1354)
C47	447.00'	7°23'22"	57.65'	

\*Note: This boundary is described in (D120) and 2021-005289 O.R. as "thence in a northeasterly direction to creek and following the meanderings of said creek 9.04 chains...". The centerline of the creek was obliterated and realigned.

**NOTES**  
Coordinates and bearings are on (CGS83 1983) Spanish 1983 Zone 5. Distances and stationing are grid distances. Divide by 0.9999491 to obtain ground distances (FB679-131, page 56). All distances are in U.S. survey feet unless otherwise noted.

**LEGEND**  
 ■ Access Prohibited  
 ■ Access Superseded  
 ■ Access Relinquished  
 ■ Existing R/W Superseded  
 (M) Indicates Radial Bearing unless otherwise noted  
 ● Possibly Destroyed  
 ○ Indicates calculated point. (Does not imply monument set)  
 ▨ Portion to be Relinquished

STATE OF CALIFORNIA  
 CALIFORNIA STATE TRANSPORTATION AGENCY  
 DEPARTMENT OF TRANSPORTATION  
**RIGHT OF WAY**  
 Relinquishment Request No. 12050

FULL SIZE MAP SCALE: 1" = 50'

FEET 0 25 50 100 150

EA(10) 05-4482u  
 DRAFTED BY: A. Foster  
 PROJECT ID: 0500000543  
 CHECKED BY: J. Madrid

STATE HIGHWAY MAP BOOK 8, PAGE 74

DISTRICT	COUNTY	ROUTE	SHEET PM	SHEET NO.	TOTAL SHEETS
5	SB	101	2.4	3	6

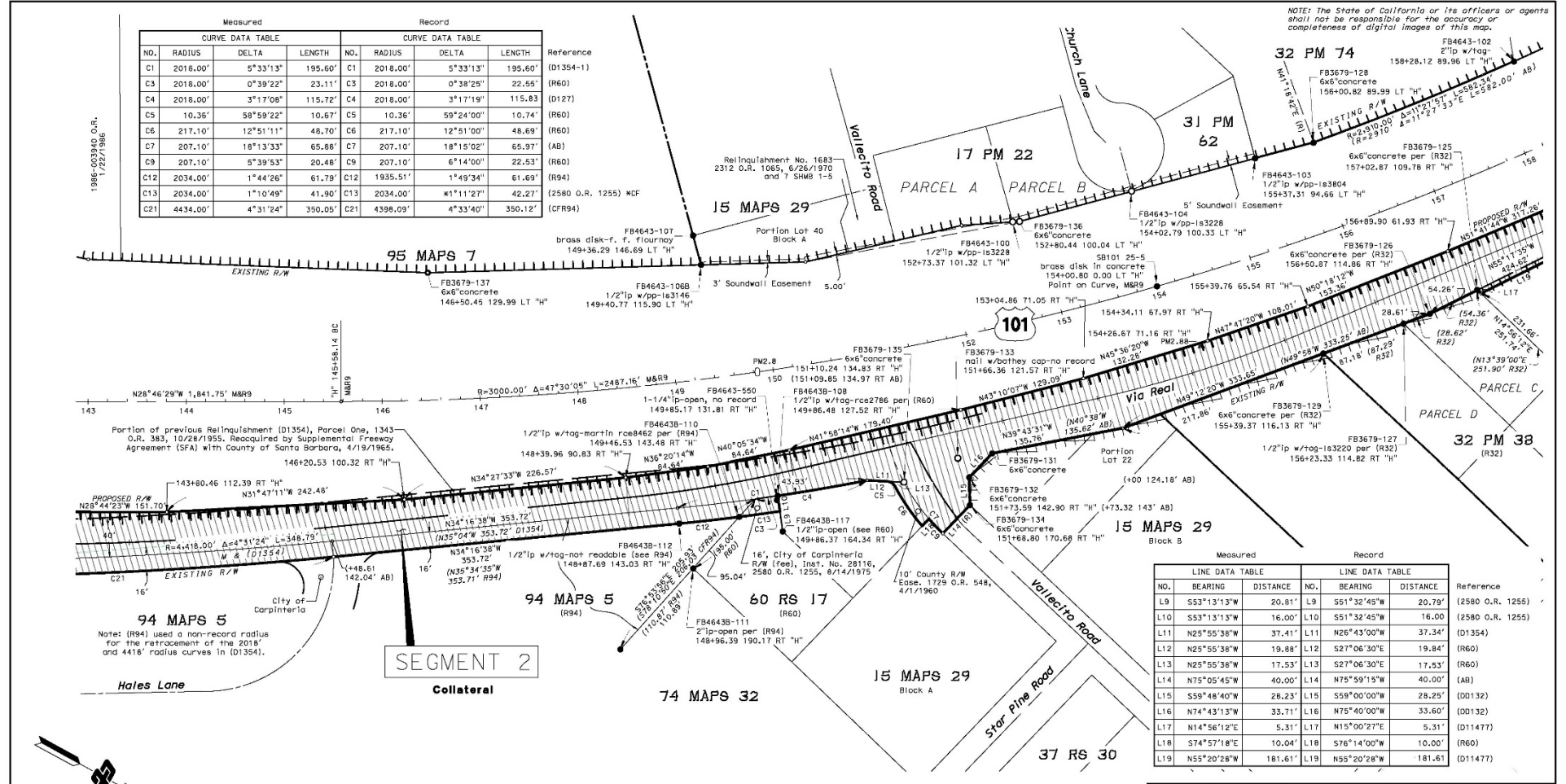
COUNTY OF SANTA BÁRBARA  
 CITY OF CARPINTERÍA  
 Pueblo Lands of Santa Bárbara

4482u\_relinquishment\_12050.dwg  
 TX:40:25:4482u:map:V:\30\_35\_4482u:RVR

Measured			Record				
NO.	RADIUS	DELTA	LENGTH	NO.	RADIUS	DELTA	LENGTH
C1	2018.00'	5°33'13"	195.60'	C1	2018.00'	5°33'13"	195.60'
C3	2018.00'	0°39'22"	23.11'	C3	2018.00'	0°38'25"	22.65'
C4	2018.00'	3°17'08"	115.72'	C4	2018.00'	3°17'19"	115.83'
C5	10.36'	58°59'22"	10.67'	C5	10.36'	59°24'00"	10.74'
C6	217.10'	12°51'11"	48.70'	C6	217.10'	12°51'00"	48.69'
C7	207.10'	18°13'33"	65.88'	C7	207.10'	18°15'02"	65.97'
C9	207.10'	5°39'53"	20.48'	C9	207.10'	6°14'00"	22.53'
C12	2034.00'	1°44'26"	61.79'	C12	1935.51'	1°49'34"	61.69'
C13	2034.00'	1°10'49"	41.90'	C13	2034.00'	1°11'27"	42.27'
C21	4434.00'	4°31'24"	350.05'	C21	4398.09'	4°33'40"	350.12'

Reference  
(D1354-1)  
(R60)  
(D127)  
(R60)  
(AB)  
(R60)  
(R94)  
(2580 O.R. 1255) MCF  
(CFR94)

NOTE: The State of California or its officers or agents shall not be responsible for the accuracy or completeness of digital images of this map.



Measured			Record		
NO.	BEARING	DISTANCE	NO.	BEARING	DISTANCE
L9	S53°13'13"W	20.81'	L9	S51°32'45"W	20.79'
L10	S53°13'13"W	16.00'	L10	S51°32'45"W	16.00'
L11	N25°55'38"W	37.41'	L11	N26°43'00"W	37.34'
L12	N25°55'38"W	19.88'	L12	S27°06'30"E	19.84'
L13	N25°55'38"W	17.53'	L13	S27°06'30"E	17.53'
L14	N75°05'45"W	40.00'	L14	N75°59'15"W	40.00'
L15	S59°48'40"W	28.23'	L15	S59°00'00"W	28.25'
L16	N74°43'13"W	33.71'	L16	N75°40'00"W	33.60'
L17	N14°56'12"E	5.31'	L17	N15°00'27"E	5.31'
L18	S74°57'18"E	10.04'	L18	S76°14'00"W	10.00'
L19	N55°20'28"W	181.61'	L19	N55°20'28"W	181.61'

**NOTES**  
Coordinates and bearings are on CGCS83 (1983) Epoch 1992.35 Zone 5. Distances and stationing are grid distances. Divide by 0.99984931 to obtain ground distances (FB3679-137, page 56). All distances are in U.S. survey feet unless otherwise noted.

**LEGEND**  
--- Access Prohibited  
--- Access Superseded  
--- Access Relinquished  
--- Existing R/W Superseded  
(R) Indicates Refusal Bearing  
(F) Indicates Found Monument unless otherwise noted  
○ Possibility Destroyed  
○ Indicates calculated point. Does not imply monument set.  
/// Portion to be relinquished

STATE OF CALIFORNIA  
CALIFORNIA STATE TRANSPORTATION AGENCY  
DEPARTMENT OF TRANSPORTATION  
**RIGHT OF WAY**  
Relinquishment Request No. 12050

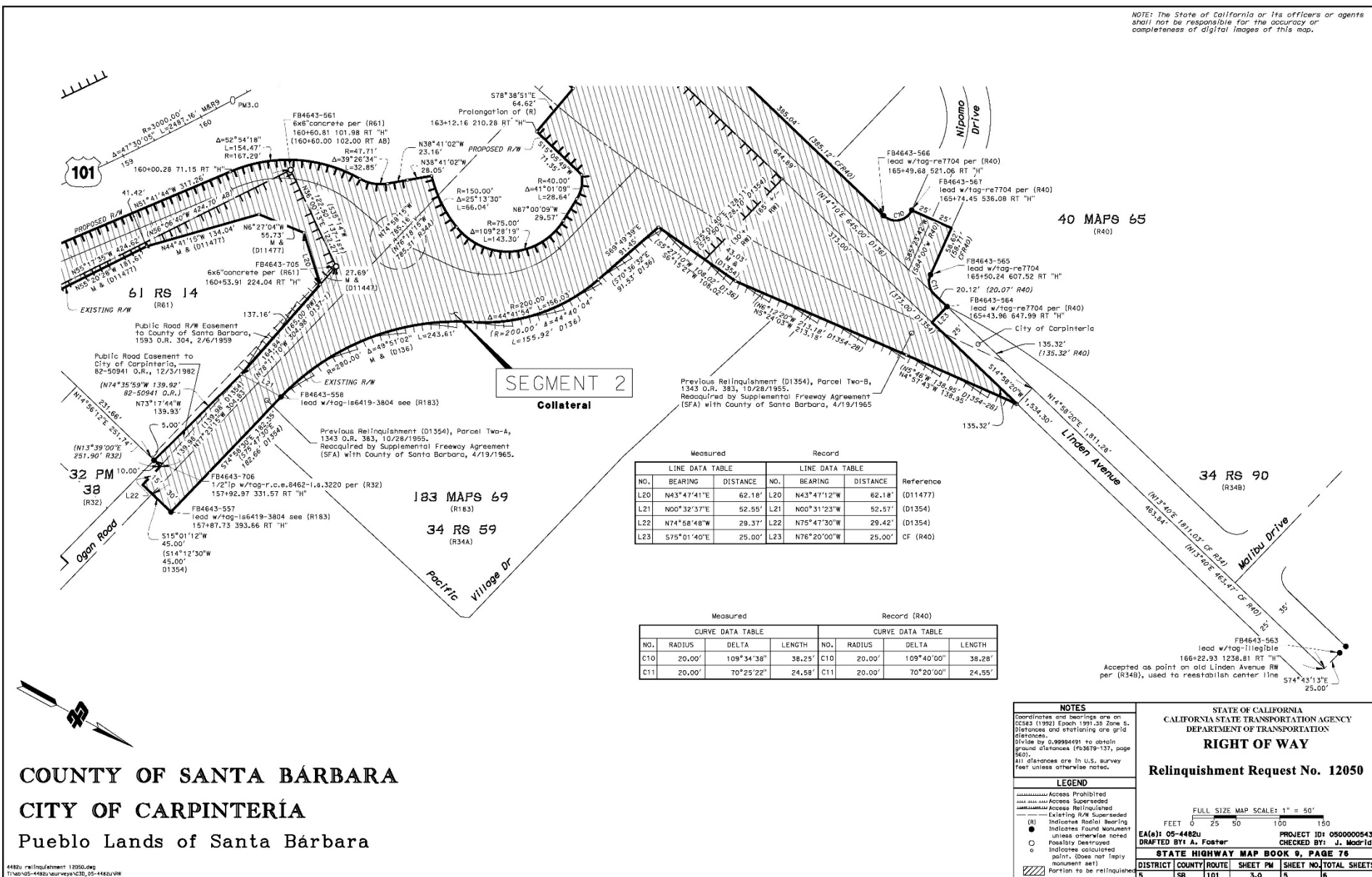
FULL SIZE MAP SCALE: 1" = 50'  
FEET 0 25 50 100 150

EA(4): 05-4482u PROJECT ID: 0500000543  
DRAWN BY: A. Foster CHECKED BY: J. Moorhead  
STATE HIGHWAY MAP BOOK 9, PAGE 78  
DISTRICT COUNTY/ROUTE SHEET PM SHEET NO./TOTAL SHEETS  
5 SB 101 2.8 4 6

COUNTY OF SANTA BÁRBARA  
CITY OF CARPINTERÍA  
Pueblo Lands of Santa Bárbara

4482u relinquishment 12050.dwg  
15feb05-4482u/survey/230\_05-4482u/38

NOTE: The State of California or its officers or agents shall not be responsible for the accuracy or completeness of digital images of this map.



Measured				Record			
NO.	BEARING	DISTANCE	NO.	BEARING	DISTANCE	Reference	
L20	N43°47'41"E	62.18'	L20	N43°47'12"W	62.18'	(D11477)	
L21	N00°32'37"E	52.55'	L21	N00°31'23"W	52.57'	(D1354)	
L22	N74°58'48"W	29.37'	L22	N75°47'30"W	29.42'	(D1354)	
L23	S75°01'40"E	25.00'	L23	N76°20'00"W	25.00'	CF (R40)	

Measured				Record (R40)			
NO.	RADIUS	DELTA	LENGTH	NO.	RADIUS	DELTA	LENGTH
C10	20.00'	109°34'38"	38.25'	C10	20.00'	109°40'00"	38.28'
C11	20.00'	70°25'22"	24.58'	C11	20.00'	70°20'00"	24.55'

**NOTES**  
 Coordinates and bearings are on CGS83 (1992) Epoch 1991.35 Zone 5. Distances and stationing are grid distances. Divide by 0.999409 to obtain ground distances (FB3678-137, page 560). All distances are in U.S. survey feet unless otherwise noted.

**LEGEND**  
 [Symbol] Access Prohibited  
 [Symbol] Access Superseded  
 [Symbol] Access Relinquished  
 [Symbol] Existing R/W Superseded  
 [Symbol] Existing R/W Relinquished  
 [Symbol] Indicates Found Monument  
 [Symbol] Indicates Found Monument unless otherwise noted  
 [Symbol] Possibly Destroyed  
 [Symbol] Indicates Calculated Point. Does not imply monument set.  
 [Symbol] Portion to be Relinquished

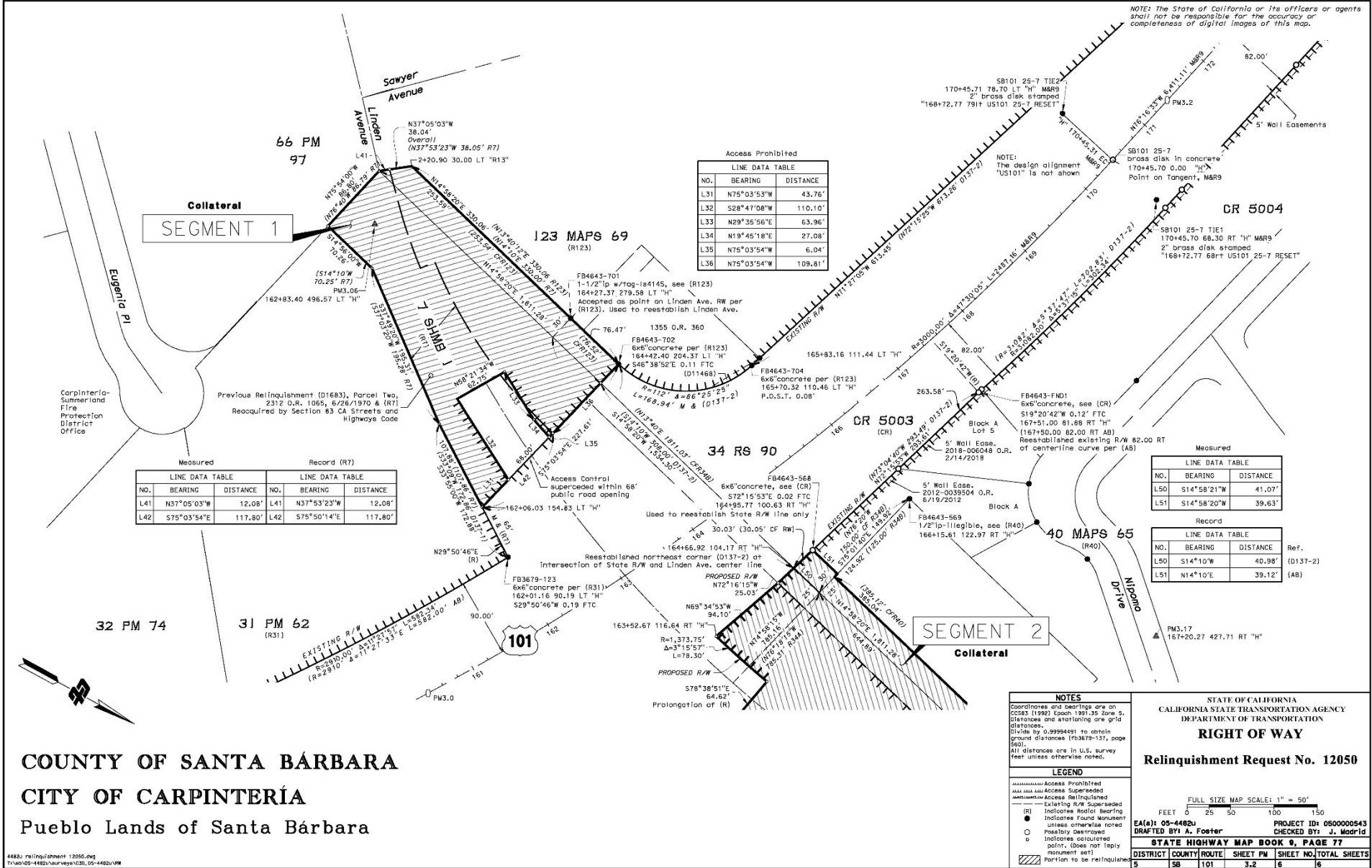
STATE OF CALIFORNIA  
 CALIFORNIA STATE TRANSPORTATION AGENCY  
 DEPARTMENT OF TRANSPORTATION  
**RIGHT OF WAY**  
 Relinquishment Request No. 12050

FULL SIZE MAP SCALE: 1" = 50'  
 FEET 0 25 50 100 150

EA(1) 05-4482u PROJECT ID: 050000543  
 DRAFTED BY: A. Foster CHECKED BY: J. Madril  
**STATE HIGHWAY MAP BOOK 9, PAGE 76**  
 DISTRICT COUNTY/ROUTE SHEET PM SHEET NO./TOTAL SHEETS  
 5 SB 101 3.0 5 6

COUNTY OF SANTA BÁRBARA  
 CITY OF CARPINTERÍA  
 Pueblo Lands of Santa Bárbara

4482u Relinquishment 12050.dwg  
 11/20/05-4482u/survey/C3D\_05-4482u.rvt



Access Prohibited

NO.	BEARING	DISTANCE
L31	N75°03'53"W	43.76'
L32	S28°47'08"W	110.10'
L33	N29°35'56"E	63.96'
L34	N19°45'18"E	27.08'
L35	N75°03'54"W	6.04'
L36	N75°03'54"W	109.81'

Measured			Record (R7)		
NO.	BEARING	DISTANCE	NO.	BEARING	DISTANCE
L41	N37°05'03"W	12.08'	L41	N37°53'23"W	12.08'
L42	S75°03'54"E	117.80'	L42	S75°50'14"E	117.80'

Measured		
NO.	BEARING	DISTANCE
L50	S14°58'21"W	41.07'
L51	S14°58'20"W	39.63'

Record			Ref.
NO.	BEARING	DISTANCE	
L50	S14°10'W	40.98'	(D137-2)
L51	N14°10'E	39.12'	(AB)

**NOTES**  
 Coordinates and bearings are on COGS (1982) Epoch 1993.5 Zone 5. Distances and stationing are grid distances. Divide by 0.9998491 to obtain ground distances (R138-137, page 580). All distances are in U.S. survey feet unless otherwise noted.

**LEGEND**  
 Access Prohibited  
 Existing R/W SuperseDED  
 Relinquished  
 Existing Found Monument unless otherwise noted  
 Possibly Destroyed  
 Indicates encroached point, (does not imply monument set)  
 Portion to be Relinquished

STATE OF CALIFORNIA  
 CALIFORNIA STATE TRANSPORTATION AGENCY  
 DEPARTMENT OF TRANSPORTATION

**RIGHT OF WAY**

**Relinquishment Request No. 12050**

FULL SIZE MAP SCALE: 1" = 50'

FEET 0 25 50 100 150

EA(41) 05-4482u PROJECT ID: 0500000543  
 DRAWN BY: A. Foster CHECKED BY: J. Madrid

STATE HIGHWAY MAP BOOK 9, PAGE 77

DISTRICT	COUNTY	ROUTE	SHEET	PM	SHEET NO.	TOTAL SHEETS
5	SB	101	3,2	6	16	

**COUNTY OF SANTA BÁRBARA**  
**CITY OF CARPINTERÍA**  
 Pueblo Lands of Santa Bárbara

#482u r01/relinquishment 12050.dwg  
 T:\MAPS\12050\12050.dwg