

MEMORANDUM

To: CHAIR AND COMMISSIONERS
CALIFORNIA TRANSPORTATION COMMISSION

CTC Meeting: December 4-5, 2025

From: STEVEN KECK, Chief Financial Officer

Reference Number: 2.3d., Action Item

Prepared By: Eric Souza, Chief
Division of Design

Subject: **VACATION RESOLUTION**

ISSUE:

Should the California Transportation Commission (Commission) approve the California Department of Transportation's (Department) request for a vacation resolution that will abandon the public's right to use highway facilities?

RECOMMENDATION:

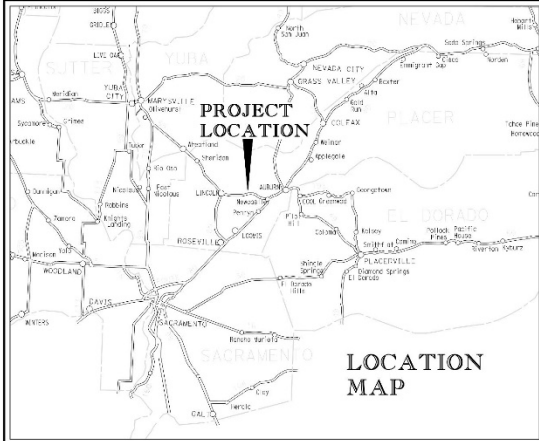
The Department recommends that the Commission approve the vacation resolution summarized below. It has been determined by the Department that the facilities identified in the vacation resolution summarized below are not essential to the proper functioning of the State Highway System and may be disposed of by vacation. Upon the recording of the approved vacation resolution in the county where the facilities are located, the public's right to use the facilities will be abandoned. The vacation complies with Sections 892, 8313, and 8330.5 of the Streets and Highways Code. Any exceptions or unusual circumstances are described in the individual summary.

RESOLUTION:

Resolution A-920 – 03-Pla-193-PM 4.4/5.5
(Request No. Vac 037475-Z) – 6 Segments

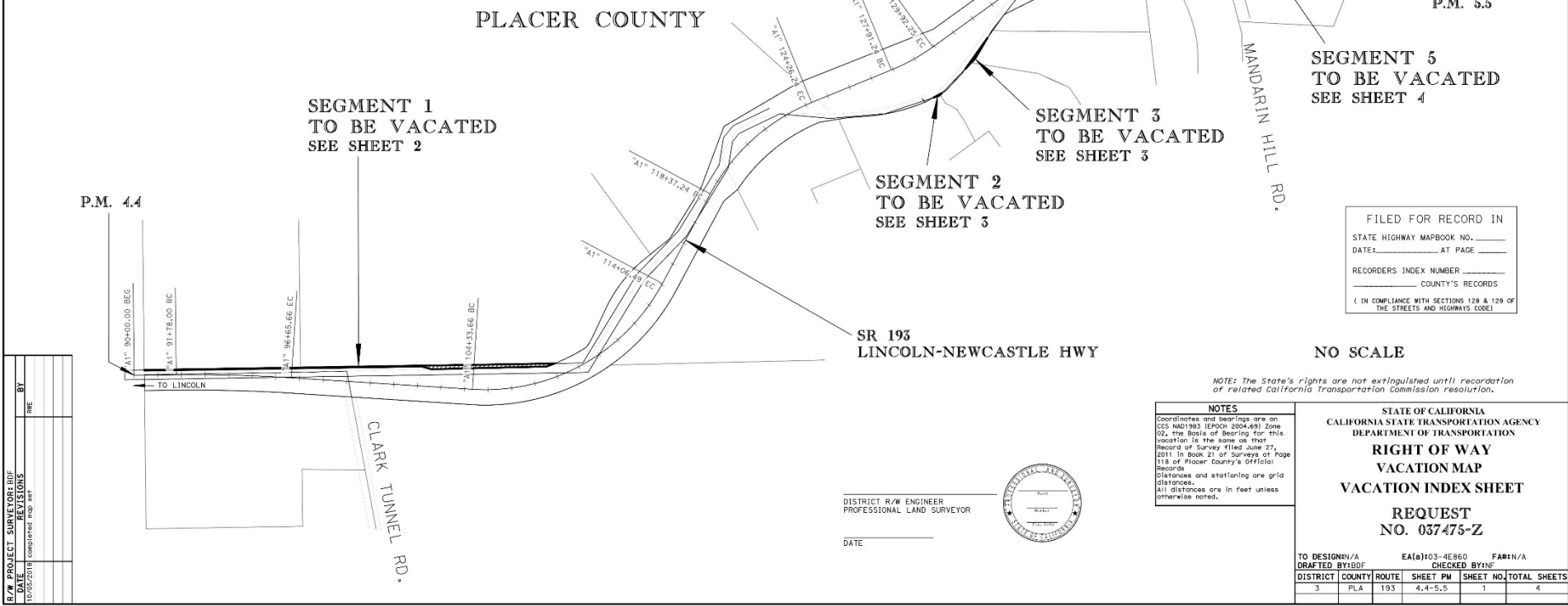
Vacates right of way in the county of Placer (County) along State Route 193 from 0.2 miles west of Clark Tunnel Road to Hidden Acres Lane, consisting of highway right of way no longer needed for State highway purposes. The County was given a 90-day notice of intent to vacate and did not protest such action. See Attachments 1A, 1B, 1C, and 1D for the vacation location.

Attachments 1A, 1B, 1C, and 1D – Vacation Location Maps



STATE OF CALIFORNIA
DEPARTMENT OF TRANSPORTATION
VACATION OF A PORTION OF HIGHWAY EASEMENT
ON STATE HIGHWAY 193
FROM APPROXIMATELY 0.2 MILES WESTERLY OF
CLARK TUNNEL RD
TO APPROXIMATELY 0.1 MILE EASTERLY OF
MANDARIN HILL RD

NOTE: The State of California or its officers or agents shall not be responsible for the accuracy or completeness of digital images of this map.



FILED FOR RECORD IN

STATE HIGHWAY MAPBOOK NO. _____

DATE: _____ AT PAGE _____

RECORDERS INDEX NUMBER _____

COUNTY'S RECORDS

(IN COMPLIANCE WITH SECTIONS 128 & 129 OF THE STREETS AND HIGHWAYS CODE)

NO SCALE

NOTE: The State's rights are not extinguished until recordation of related California Transportation Commission resolution.

NOTES

Coordinates and bearings are on CCS NAD1983 (EPOCH 2004.69) Zone 02. The Basis of Bearing for this vacation is the same as that of Record of Survey filed June 27, 2011 in Book 21 of Surveys of Page 118 of Placer County's Official Records.

Distances and stationing are grid distances.

All distances are in feet unless otherwise noted.

STATE OF CALIFORNIA
STATE TRANSPORTATION AGENCY
DEPARTMENT OF TRANSPORTATION
RIGHT OF WAY
VACATION MAP
VACATION INDEX SHEET
REQUEST
NO. 037475-Z

| | | |
|-----------------------|-----------------|------------------------|
| TO DESIGN/IN/A | EA(0)103-4E860 | FARIN/A |
| DRAFTED BY: BDF | CHECKED BY: BDF | |
| DISTRICT COUNTY ROUTE | SHEET PM | SHEET NO. TOTAL SHEETS |
| 3 PLA 193 | 4.4-5.5 | 1 4 |

PROJECT ID: 0300000725

| | |
|-----------------------------|------|
| R/W PROJECT SURVEYOR: BDF | BY |
| REVISIONS | DATE |
| 1. 01/20/2011 completed map | |

DISTRICT R/W ENGINEER
PROFESSIONAL LAND SURVEYOR

DATE _____

