

## **MEMORANDUM**

**To:** CHAIR AND COMMISSIONERS  
CALIFORNIA TRANSPORTATION COMMISSION

**CTC Meeting:** March 19-20, 2026

**From:** STEVEN KECK, Chief Financial Officer

**Reference Number:** 2.3c., Action Item

**Prepared By:** Eric Souza, Chief  
Division of Design

**Subject:** **RELINQUISHMENT RESOLUTIONS**

### **ISSUE:**

Should the California Transportation Commission (Commission) approve the California Department of Transportation's (Department) request for relinquishment resolutions that will transfer highway facilities no longer needed for the State Highway System to the local agency identified in the summaries?

### **RECOMMENDATION:**

The Department recommends that the Commission approve the relinquishment resolutions, summarized below, that will transfer highway facilities no longer needed for the State Highway System to the local agency identified in the summaries. It has been determined by the Department that each facility in the specific relinquishment resolution summarized below may be disposed of by relinquishment. Upon the recording of the approved relinquishment resolution in the county where the facilities are located, all rights, title, and interest of the State in and to the facilities to be relinquished will be transferred to the local agency identified in the summary. The facilities are safe and drivable. The local authority has been advised of the pending relinquishment a minimum of 90 days before the Commission meeting pursuant to Section 73 of the Streets and Highways Code. Any exceptions or unusual circumstances are described in the individual summary.

**RESOLUTION:**

Resolution R-4127 – 08-SBd-83-PM 0.197/6.410  
(Request No. 509-S) – 2 Segments

Relinquishes right of way in the city of Chino along State Route 83 between State Route 71 and Riverside Drive, under the terms and conditions as stated in the relinquishment agreement effective December 16, 2025, determined to be in the best interest of the State. The relinquishment agreement shows a financial contribution of \$15,885,000 that includes construction costs only (PPNO 3015C). The total financial contribution of \$18,824,000 (18.5 percent increase) includes support costs, requested by the city of Chino as a part of accepting this relinquishment. Authorized by Chapter 516, Statute of 2023, which amended Section 383 of the Streets and Highways Code. See Attachments 1A, 1B, 1C, 1D, 1E, and 1F for the relinquishment location.

Resolution R-4128 – 11-SD-5-PM 12.9/13.2  
(Request No. R34639) – 1 Segment

Relinquishes right of way consisting of a nonmotorized transportation facility, in the city of San Diego (City) along Interstate 5, bounded by Boston Avenue, 29th Street, and 32nd Street, under the terms and conditions as stated in Relinquishment Agreement 11-8483, determined to be in the best interest of the State. The City, by City Resolution No. R-316047, dated February 25, 2025, agreed to waive the 90-day notice and accept title upon relinquishment by the State. See Attachments 2A, 2B, and 2C for the relinquishment location.

Attachments 1A, 1B, 1C, 1D, 1E, 1F, 2A, 2B, and 2C – Relinquishment Location Maps

STATE OF CALIFORNIA  
 CALIFORNIA STATE TRANSPORTATION AGENCY  
 DEPARTMENT OF TRANSPORTATION

IN THE CITY OF CHINO, COUNTY OF SAN BERNARDINO  
 PROPOSED RELINQUISHMENT BY LEGISLATIVE ENACTMENT  
 OF STATE ROUTE 83, ALSO KNOWN AS EUCLID AVENUE FROM  
 STATE ROUTE 71 TO CITY LIMITS AT RIVERSIDE DRIVE

DISTRICT	COUNTY	ROUTE	POST MILE	SHEET	TOTAL
08	SBD	83	0.97 / 6.41	1	6

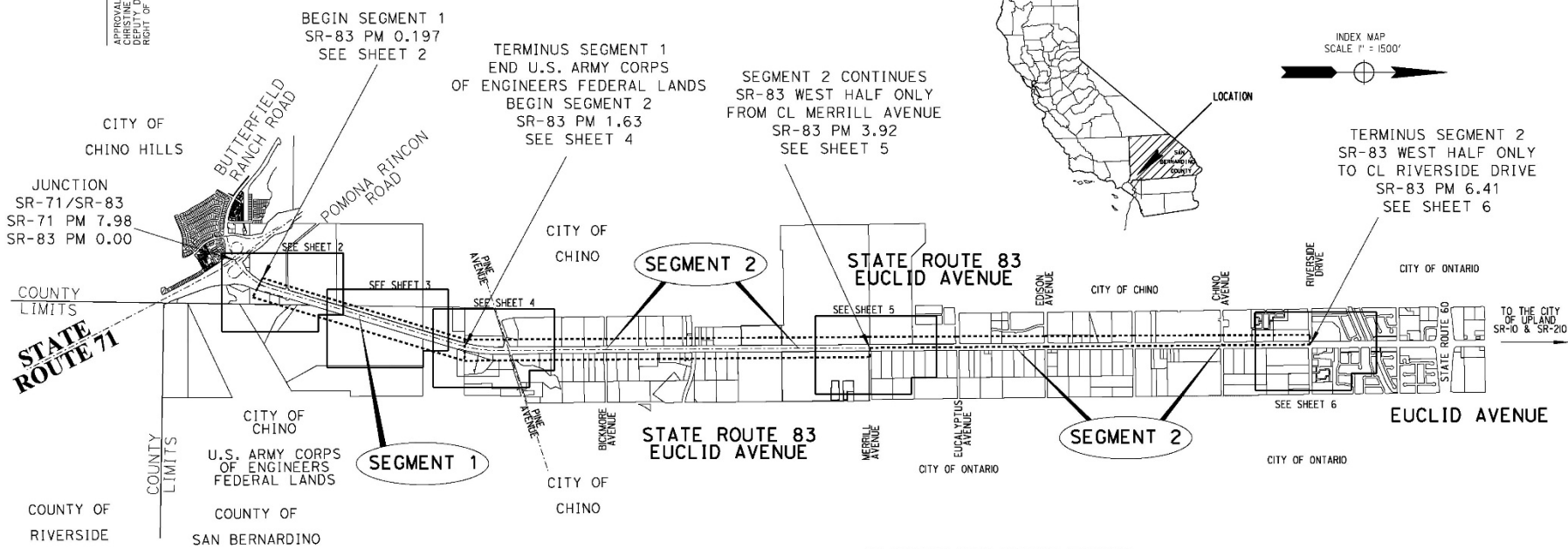
L. THOMAS J. DATMAN, DO HEREBY STATE I AM A LICENSED LAND SURVEYOR EMPLOYED BY THE CALIFORNIA DEPARTMENT OF TRANSPORTATION AND THAT THE SURVEY OF THE STATE HIGHWAY RIGHT OF WAY SHOWN ON THIS MAP WAS MADE BY EMPLOYEES OF SAID GOVERNMENT UNDER AUTHORITY AND THAT SUCH SURVEY IS ACCURATELY REPRESENTED ON THIS MAP

LICENSED LAND SURVEYOR  
 THOMAS J. DATMAN  
 EXP. 3-30-2026  
 No. 6833

DATE APPROVED \_\_\_\_\_



APPROVAL RECOMMENDED BY:  
 CHRISTINE L. SENTENO  
 DEPUTY DISTRICT DIRECTOR  
 RIGHT OF WAY & LAND SURVEYS



INDEX MAP  
 SCALE 1" = 1500'

- RELINQUISHMENT NOTES
- SEE RIGHT OF WAY RECORD MAPS COUNTER AT THE DISTRICT OFFICE FOR COMPLETE RIGHT OF WAY AND ACCURATE ACCESS DATA. STATE RIGHTS ARE NOT EXTINGUISHED UNTIL RECORDATION OF RELATED CTC RESOLUTION.
  - AB 250 SIGNED BY THE GOVERNOR AND FILED BY THE SECRETARY OF STATE ON 10-08-2023 AMENDING SHC 383 TO ALLOW THE STATE TO RELINQUISH BY LEGISLATIVE ENACTMENT TO THE CITY OF CHINO.
  - LOCALLY KNOWN AS EUCLID AVENUE, SR-83 WAS ORIGINALLY ADOPTED BY STATE AS SR-192 IN 1933 PER THE BREED'S ACT. THE ORIGINAL EUCLID AVENUE IS SHOWN ON THE MAP OF RANCHO SANTA ANA DEL CHINO PER MB 6/75, SBC. EUCLID AVENUE HAS BEEN ESTABLISHED AS HAVING A FULL WIDTH OF 200' AND A HALF-WIDTH OF 100' BY STATE AND LOCAL RECORDS.
  - IN 1972, THE STATE OF CALIFORNIA COMPLETED A CONSOLIDATED PROCEEDING FOR QUIET TITLE AND DECLARATORY RELIEF. THIS ACTION CONCLUDED IN A 200' R/W TO STATE FROM PINE AVENUE TO PHILLIPS AVENUE AS DESCRIBED IN DOCUMENT RECORDED ON SEPTEMBER 13, 1972 IN BOOK 809, PAGE 930 OF OFFICIAL RECORDS IN THE COUNTY OF SAN BERNARDINO.
  - SR-83 CROSSES FEDERAL LANDS OF THE UNITED STATES ARMY CORPS OF ENGINEERS (USACE) FROM PM 0.00 TO PM 1.630. THE PORTION OF SAID LANDS SUBJECT TO THIS RELINQUISHMENT IS SHOWN AS SEGMENT 1 FROM PM 0.97 TO PM 1.630 ON THIS SHEET AND SHEETS 2, 3, AND 4. USACE HAS APPROVED THIS RELINQUISHMENT AND WILL ISSUE A TEMPORARY LICENSE AGREEMENT TO THE CITY OF CHINO UPON RELINQUISHMENT BY STATE.

SAN BERNARDINO COUNTY RECORDER'S CERTIFICATE

THIS MAP HAS BEEN FILED UNDER DOCUMENT NUMBER \_\_\_\_\_

THIS \_\_\_\_\_ DAY OF \_\_\_\_\_, 20\_\_\_\_, AT \_\_\_\_\_ M. IN BOOK \_\_\_\_\_ OF STATE HIGHWAY MAPS AT PAGE \_\_\_\_\_, AT THE REQUEST OF STATE OF CALIFORNIA, DEPARTMENT OF TRANSPORTATION

IN THE AMOUNT OF \$ \_\_\_\_\_.

JOSIE GONZALES  
 ASSESSOR-RECORDER  
 COUNTY OF SAN BERNARDINO

BY: \_\_\_\_\_  
 DEPUTY RECORDER

FREE RECORDING: THIS INSTRUMENT IS FOR THE BENEFIT OF THE STATE OF CALIFORNIA AND IS ENTITLED TO BE RECORDED WITHOUT FEE (GOVY. CODE 6103)

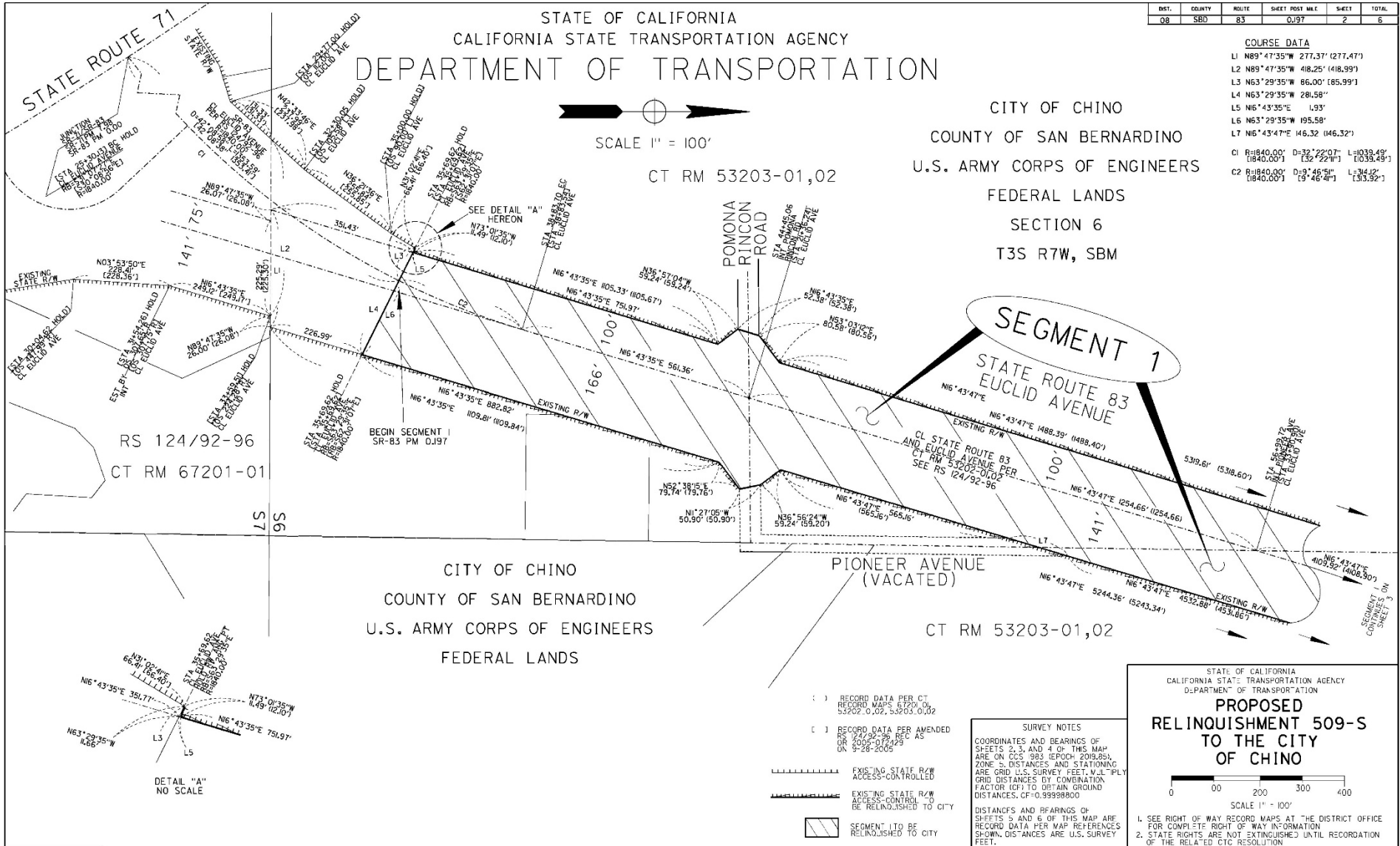
RELINQUISHMENT PORTIONS

STATE OF CALIFORNIA  
 CALIFORNIA STATE TRANSPORTATION AGENCY  
 DEPARTMENT OF TRANSPORTATION

**INDEX MAP OF PROPOSED RELINQUISHMENT 509-S TO THE CITY OF CHINO**

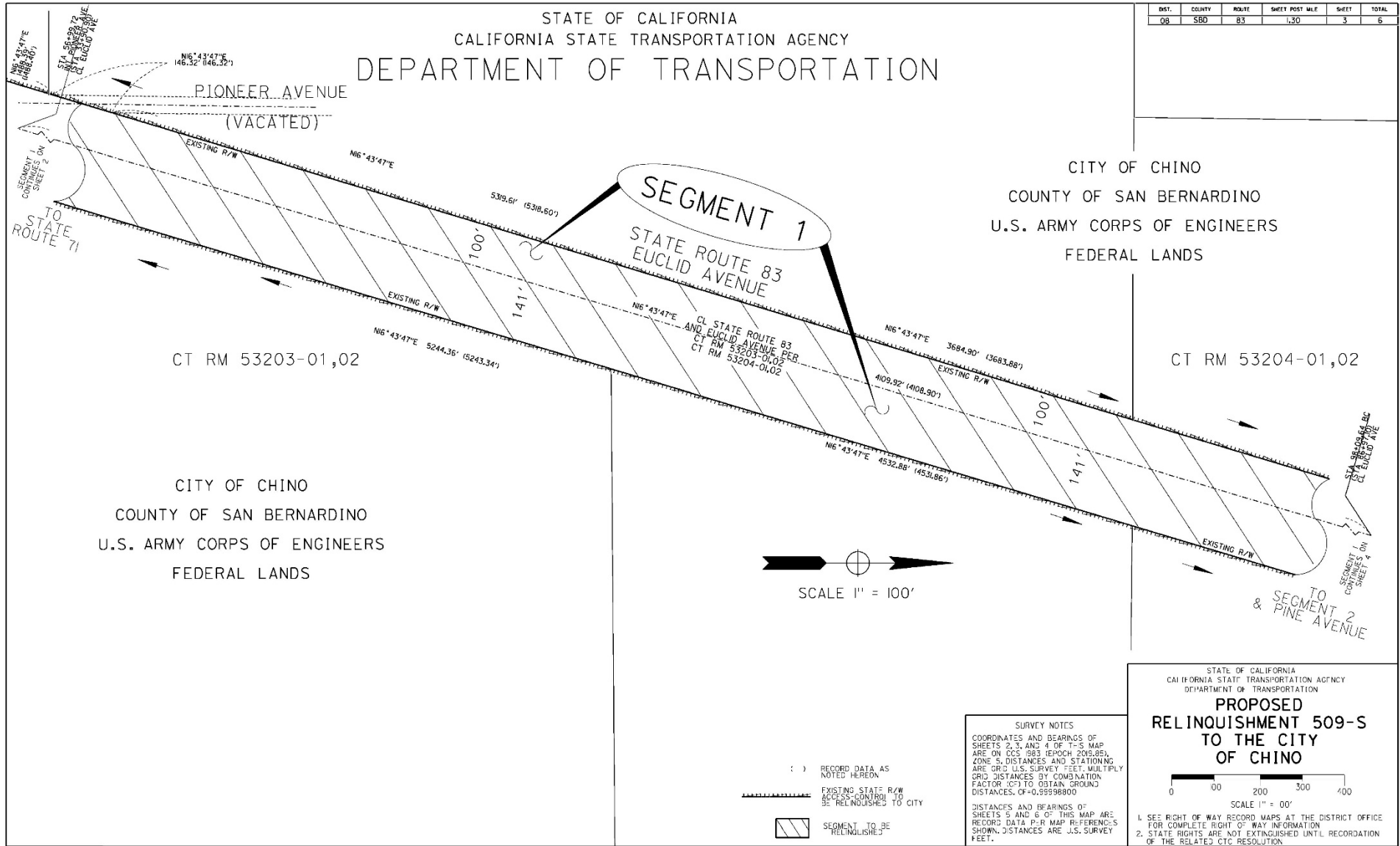
INDEX MAP SCALE 1" = 1500'

FOR ADDITIONAL INFORMATION, PLEASE SEE THE DISTRICT RECORD MAPS PUBLIC CENTER AT 464 WEST FOURTH STREET, SAN BERNARDINO, CA 92401



STATE OF CALIFORNIA  
 CALIFORNIA STATE TRANSPORTATION AGENCY  
 DEPARTMENT OF TRANSPORTATION

DIST.	COUNTY	ROUTE	SHEET POST MILE	SHEET	TOTAL
08	SBD	83	1.30	3	6



STATE OF CALIFORNIA  
CALIFORNIA STATE TRANSPORTATION AGENCY  
DEPARTMENT OF TRANSPORTATION

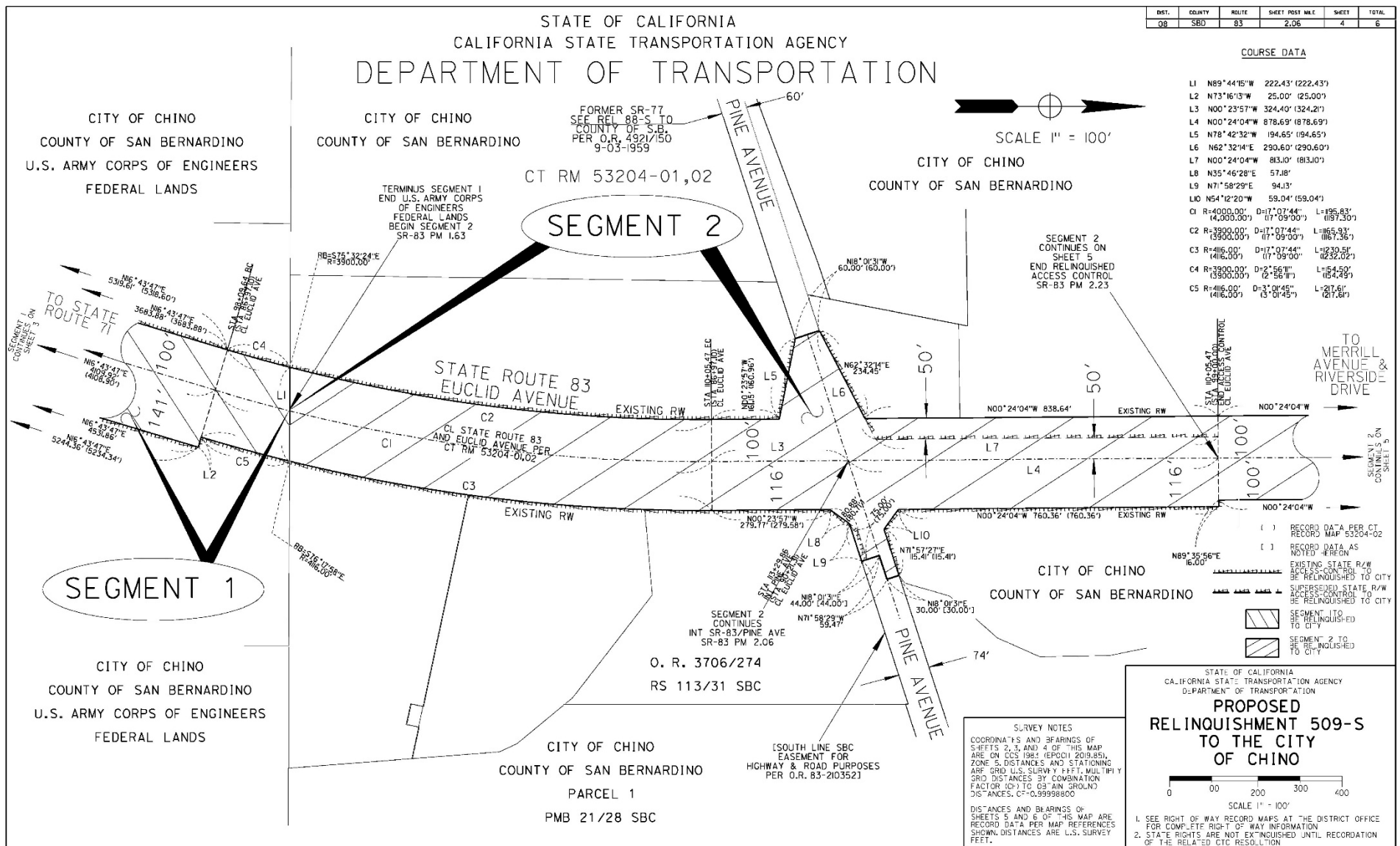
DIST.	COUNTY	ROUTE	SHEET POST MILE	SHEET	TOTAL
08	SBD	83	2.06	4	6

COURSE DATA

L1	N89°44'15"W	222.43'	(222.43')
L2	N73°16'13"W	25.00'	(25.00')
L3	N00°23'57"W	324.40'	(324.2')
L4	N00°24'04"W	878.69'	(878.69')
L5	N78°42'32"W	194.65'	(194.65')
L6	N62°32'14"E	290.60'	(290.60')
L7	N00°24'04"W	813.00'	(813.00')
L8	N35°46'28"E	57.88'	
L9	N71°58'29"E	94.13'	
L10	N54°12'20"W	59.04'	(59.04')
C1	R=4000.00', D=17°07'44"	L=195.83'	(4,000.00') (17°09'00") (197.30')
C2	R=3900.00', D=17°07'44"	L=185.31'	(3,900.00') (17°09'00") (187.36')
C3	R=416.00', D=17°07'44"	L=1230.58'	(416.00') (17°09'00") (232.02')
C4	R=3900.00', D=2°56'11"	L=54.50'	(3,900.00') (2°56'11") (54.49')
C5	R=416.00', D=3°01'45"	L=217.61'	(416.00') (3°01'45") (217.51')



SCALE 1" = 100'



- ( ) RECORD DATA PER CT RECORD MAP 53204-02
- ( ) RECORD DATA AS NOTED HEREON
- ( ) EXISTING STATE R/W EASEMENTS TO BE RELINQUISHED TO CITY
- ( ) SUPERSEDED STATE R/W ACCESS CONTROL TO BE RELINQUISHED TO CITY
- ( ) SEGMENT 1 TO BE RELINQUISHED TO CITY
- ( ) SEGMENT 2 TO BE RELINQUISHED TO CITY

STATE OF CALIFORNIA  
CALIFORNIA STATE TRANSPORTATION AGENCY  
DEPARTMENT OF TRANSPORTATION

**PROPOSED RELINQUISHMENT 509-S TO THE CITY OF CHINO**

SCALE 1" = 100'

- SEE RIGHT OF WAY RECORD MAPS AT THE DISTRICT OFFICE FOR COMPLETE RIGHT OF WAY INFORMATION
- STATE RIGHTS ARE NOT EXTINGUISHED UNTIL RECORDATION OF THE RELATED CTC RESOLUTION

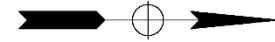
**SURVEY NOTES**

COORDINATES AND BEARINGS OF SHEETS 2, 3, AND 4 OF THIS MAP ARE ON COS 1983 (EPS01) 2013.855, ZONE 8, DISTANCES AND STATIONING ARE GRID U.S. SURVEY FEET, MULTIPLY GRID DISTANCES BY COMBINATION FACTOR (0.999998800) TO OBTAIN GROUND DISTANCES. C=0.999998800

DISTANCES AND BEARINGS OF SHEETS 5 AND 6 OF THIS MAP ARE RECORD DATA. PER MAP REFERENCES SHOWN, DISTANCES ARE U.S. SURVEY FEET.

STATE OF CALIFORNIA  
 CALIFORNIA STATE TRANSPORTATION AGENCY  
 DEPARTMENT OF TRANSPORTATION

DIST.	COUNTY	ROUTE	SHEET POST MILE	SHEET	TOTAL
06	SBD	83	3.92	5	6



SCALE 1" = 100'

RANCHO SANTA ANA DEL CHINO

MAP BOOK 6 / PG 15

RECORDS OF S.B. COUNTY

CT RW 916510 & 916511

48906-01 & 48906-02

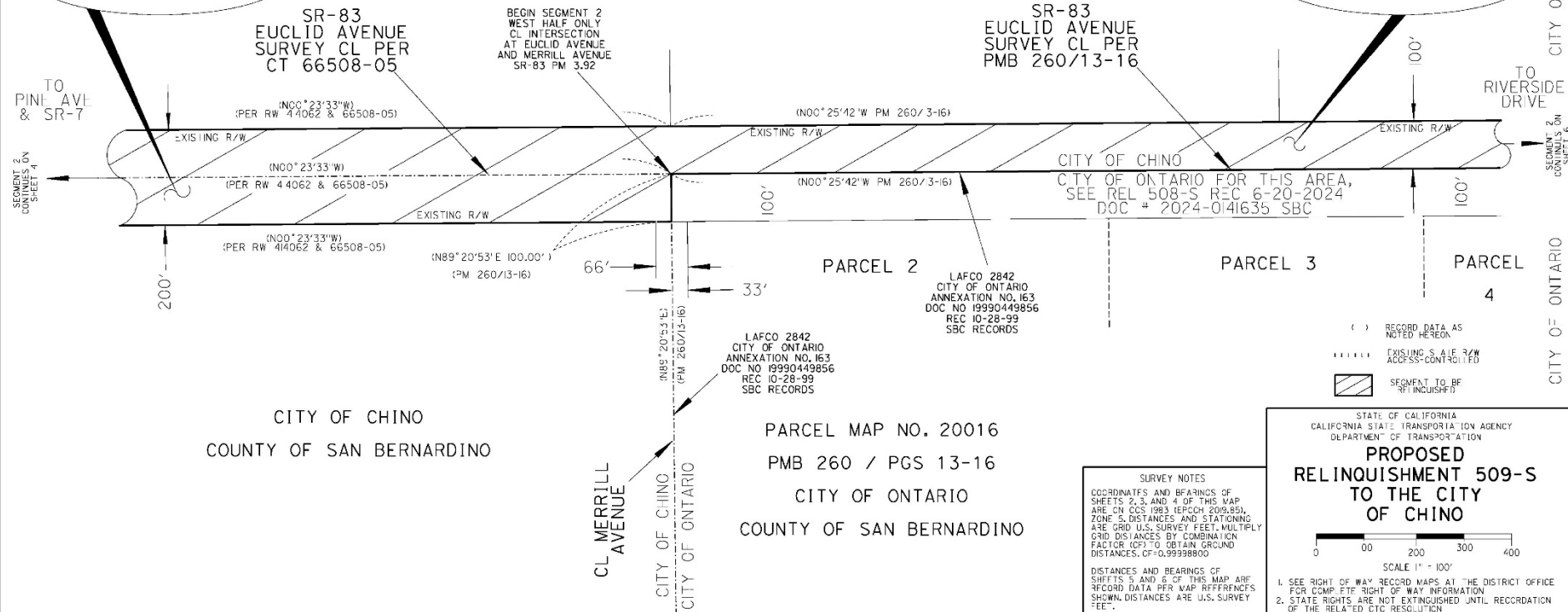
CT RW 414050 & 414062

66507-01 & 66508-05

CITY OF CHINO  
 COUNTY OF SAN BERNARDINO

SEGMENT 2

SEGMENT 2



- ( ) RECORD DATA AS NOTED HEREON
- ..... EXISTING S.A. R/W ACCESS-CONTROLLED
- SEGMENT TO BE RELINQUISHED

**SURVEY NOTES**

COORDINATES AND BEARINGS OF SHEETS 2, 3, AND 4 OF THIS MAP ARE ON CCS 1983 (EPCCH 2019.85), ZONE 5. DISTANCES AND STATIONING ARE GRID U.S. SURVEY FEET. MULTIPLY GRID DISTANCES BY COMBINATION FACTOR 1.007 TO OBTAIN GROUND DISTANCES. CF-0.99998800

DISTANCES AND BEARINGS OF SHEETS 5 AND 6 OF THIS MAP ARE RECORD DATA PER MAP REFERENCES SHOWN. DISTANCES ARE U.S. SURVEY FEET.

STATE OF CALIFORNIA  
 CALIFORNIA STATE TRANSPORTATION AGENCY  
 DEPARTMENT OF TRANSPORTATION

**PROPOSED RELINQUISHMENT 509-S TO THE CITY OF CHINO**

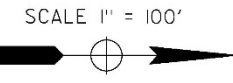
SCALE 1" = 100'

1. SEE RIGHT OF WAY RECORD MAPS AT THE DISTRICT OFFICE FOR COMPLETE RIGHT OF WAY INFORMATION
2. STATE RIGHTS ARE NOT EXTINGUISHED UNTIL RECORDED AT THE RELATED CTC REGISTRATION

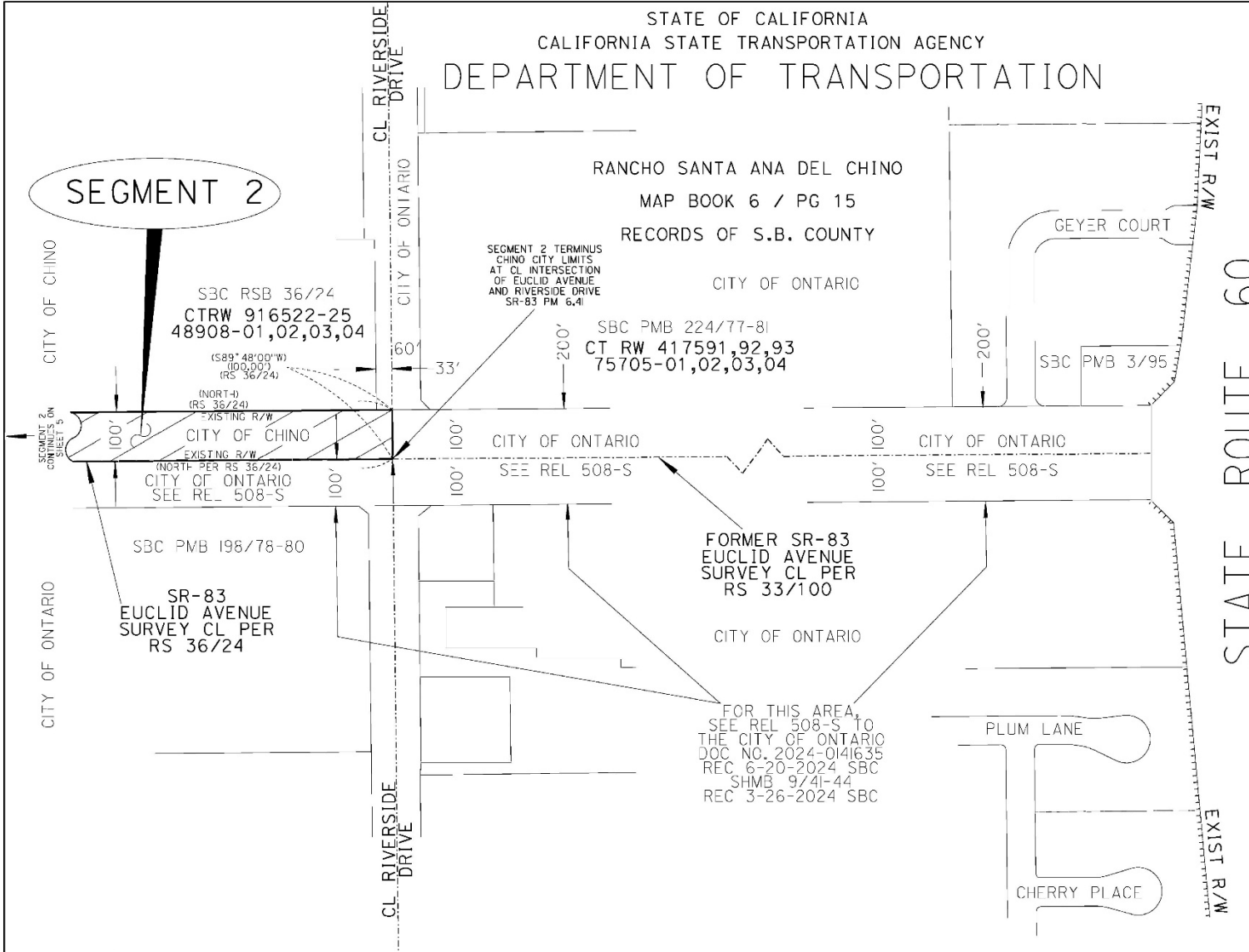
DISTRICT	COUNTY	ROUTE	SHEET POST MILE	SHEET	TOTAL
08	SBD	83	6.40	6	6

STATE OF CALIFORNIA  
CALIFORNIA STATE TRANSPORTATION AGENCY  
DEPARTMENT OF TRANSPORTATION

RANCHO SANTA ANA DEL CHINO  
MAP BOOK 6 / PG 15  
RECORDS OF S.B. COUNTY



SEGMENT 2



STATE ROUTE 60  
NOT A PART

- ( ) RECORD DATA AS SHOWN HEREON
- EXISTING STATE R/W ACCESS-CONTROLLED
- SEGMENT 2 TO BE RELINQUISHED

**SURVEY NOTES**  
COORDINATES AND BEARINGS OF SHEETS 2, 3, AND 4 OF THIS MAP ARE ON CCS '83 (EPOCH 2018.85), ZONE 5. DISTANCES AND STATIONING ARE GRID U.S. SURVEY FEET. MULTIPLY GRID DISTANCES BY COMBINATION FACTOR (CF) TO OBTAIN GROUND DISTANCES. CF=0.99998800  
DISTANCES AND BEARINGS OF SHEETS 5 AND 6 OF THIS MAP ARE RECORD DATA PER MAP REFERENCE SHOWN. DISTANCES ARE U.S. SURVEY FEET.

FOR THIS AREA, SEE REL 508-S TO THE CITY OF ONTARIO  
DOC NO. 2024-014635  
REC. 6-20-2024 SBC  
SHMB 9/4/44  
REC 3-26-2024 SBC

STATE OF CALIFORNIA  
CALIFORNIA STATE TRANSPORTATION AGENCY  
DEPARTMENT OF TRANSPORTATION

**PROPOSED RELINQUISHMENT 509-S TO THE CITY OF CHINO**

SCALE 1" = 100'

1. SEE RIGHT OF WAY RECORD MAPS AT THE DISTRICT OFFICE FOR COMPLETE RIGHT OF WAY INFORMATION.
2. STATE RIGHTS ARE NOT EXTINGUISHED UNTIL RECORATION OF THE RELATED CTC RESOLUTION.

**BASIS OF BEARINGS & COORDINATES**

THE BASIS OF BEARINGS FOR THIS SURVEY IS THE CALIFORNIA COORDINATE SYSTEM OF 1983, 1991.35 EPOCH ADJUSTMENT (CESS3 (1991.35)) ZONE 6. GRID BEARING DETERMINED LOCALLY BY A LINE BETWEEN FIRST ORDER RECORD OF SURVEY NO. 14492 STATIONS DOT ECC 1986 AND SD 241, BEING 8°11'15" N. COORDINATES SHOWN TO RIGHT OF WAY, CENTERLINE AND FOUND POINT MONUMENTS WERE DERIVED FROM TIES TO SAID CONTROL MONUMENTS. THEY ARE FOR INFORMATION ONLY AND ARE NOT TO BE USED IN THE EXTENSION OF THE CALIFORNIA COORDINATE SYSTEM.

DOT ECC 1986  
FOUND 2 1/4" CADM BRASS DISC  
STAMPED "DOT ECC 1986"  
PER ROS 14492  
N 1 841 756.32  
E 6 298 852.95  
LAT 32°43'01.23063" N  
LONG 117°06'41.79698" W  
Y = -00°28'24.49"  
CGF = 1.0000085  
ELEV = 180.19'  
NAVD88 ELEVATION

*Ronald M. Brown*  
PROFESSIONAL LAND SURVEYOR **LS 2685**  
DATE: APRIL 29, 2025



NOTE:  
STATE'S RIGHTS ARE NOT EXTINGUISHED UNTIL RECORDATION OF RELATED CTC RESOLUTION.

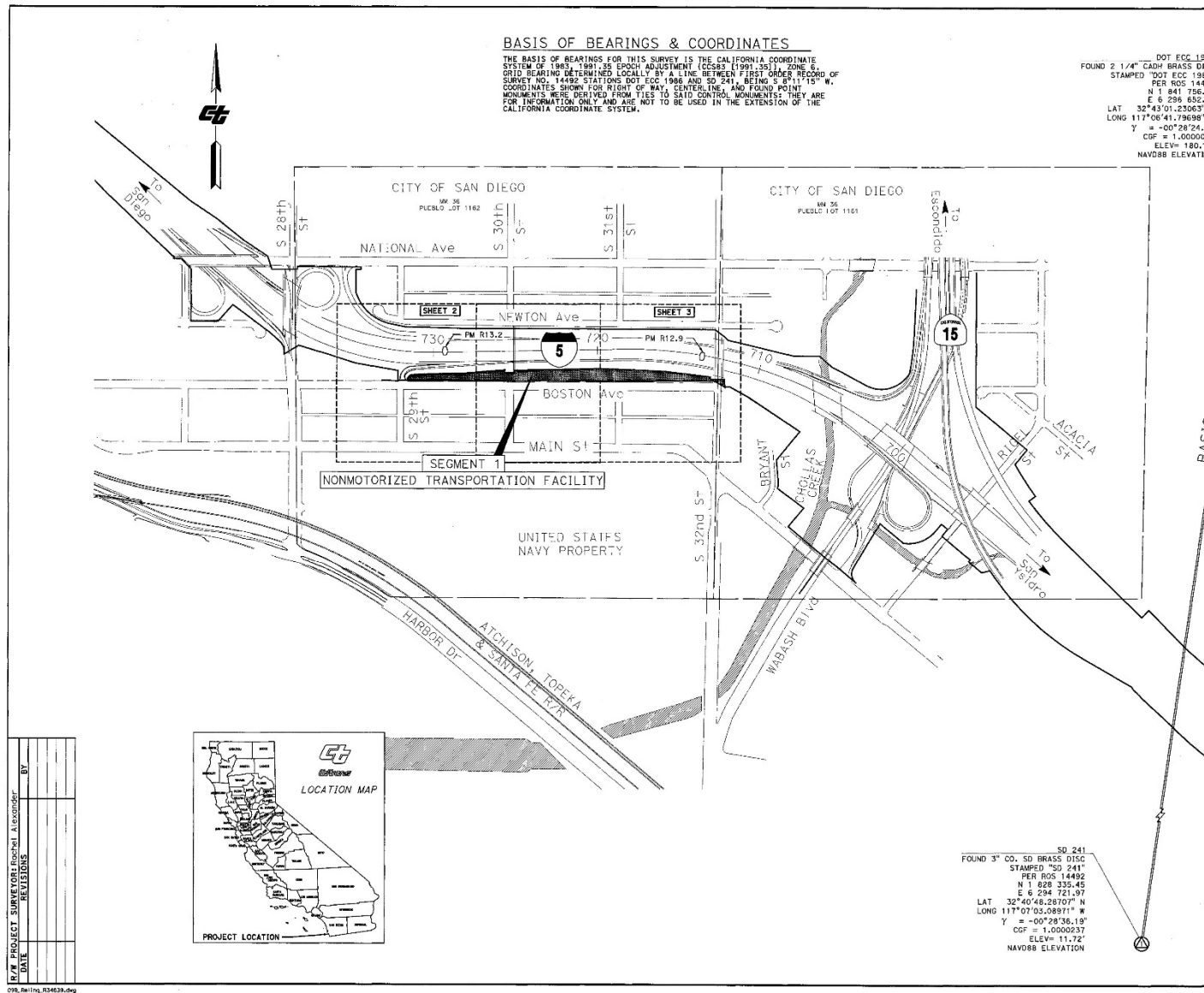
CALIFORNIA TRANSPORTATION COMMISSION  
RESOLUTION DATE: \_\_\_-20\_\_\_  
CTC NO.: \_\_\_\_\_

CTC RESOLUTION RECORDING DATA  
REC. DATE: \_\_\_-20\_\_\_  
FILE NO.: \_\_\_\_\_

STATE HIGHWAY MAP RECORDING DATA  
BOOK: \_\_\_\_\_ PAGE: \_\_\_\_\_  
FILE NO.: **2025-7000045**  
FILED AT THE REQUEST OF THE CALIFORNIA STATE TRANSPORTATION AGENCY,  
DEPARTMENT OF TRANSPORTATION, DISTRICT 11,  
THIS 10<sup>th</sup> DAY OF Nov., 2025, AT 2:33 P.M.  
JORDAN Z. MARKS, COUNTY RECORDER

By: *Original Signed*  
DEPUTY COUNTY RECORDER

BASIS OF BEARING  
S8°11'15"W 13,359.07'



NOTE: The State's rights are not extinguished until recordation of related California Transportation Commission resolution.

<p><b>NOTES</b></p> <p>Coordinates and bearings are on the 1983, 1991.35 Zone 6. Distances and elevations are g.c.f. distances. Divide by 1.000027 to obtain ground distances. All distances are in feet unless otherwise noted.</p>		<p>STATE OF CALIFORNIA CALIFORNIA STATE TRANSPORTATION AGENCY DEPARTMENT OF TRANSPORTATION <b>RIGHT OF WAY RELINQUISHMENT MAP</b> R34639</p> <p>FOR PREVIOUS R/W INFORMATION SEE MAP(S) LO-3518.7, 3518.9, 3518.10</p> <p>FULL SIZE MAP SCALE: 1" = 300'</p> <p>FEET 0 150 300 600 900</p>											
<p><b>LEGEND</b></p> <p>Access Prohibited</p> <p>Access Supererogated</p> <p>Access Requiring</p> <p>Limit of Nonmotorized Transportation Facility</p> <p>Access Opening (Private)</p> <p>Indicates Right-of-Way</p> <p>Indicates Found Monument as noted</p> <p>Reserved cross as noted</p> <p>Portion to be Relinquished</p>		<p>TO DESIGN: EAT(8)4C004</p> <p>DRAFTED BY: JZM CHECKED BY: JZM</p> <table border="1"> <tr> <th>DISTRICT</th> <th>COUNTY</th> <th>ROUTE</th> <th>SHEET PM</th> <th>TOTAL SHEETS</th> </tr> <tr> <td>11</td> <td>SD</td> <td>005 R12.9-R13.2</td> <td>1</td> <td>3</td> </tr> </table>		DISTRICT	COUNTY	ROUTE	SHEET PM	TOTAL SHEETS	11	SD	005 R12.9-R13.2	1	3
DISTRICT	COUNTY	ROUTE	SHEET PM	TOTAL SHEETS									
11	SD	005 R12.9-R13.2	1	3									

SD 241  
FOUND 3" CO. SD BRASS DISC  
STAMPED "SD 241"  
PER ROS 14492  
N 1 828 335.45  
E 6 294 721.97  
LAT 32°40'46.28707" N  
LONG 117°07'03.08971" W  
Y = -00°29'36.19"  
CGF = 1.0000237  
ELEV = 11.72'  
NAVD88 ELEVATION



DATE	BY

P:\11\112\112200009\112200009\112200009.dwg  
P:\11\112\112200009\112200009\112200009.dwg

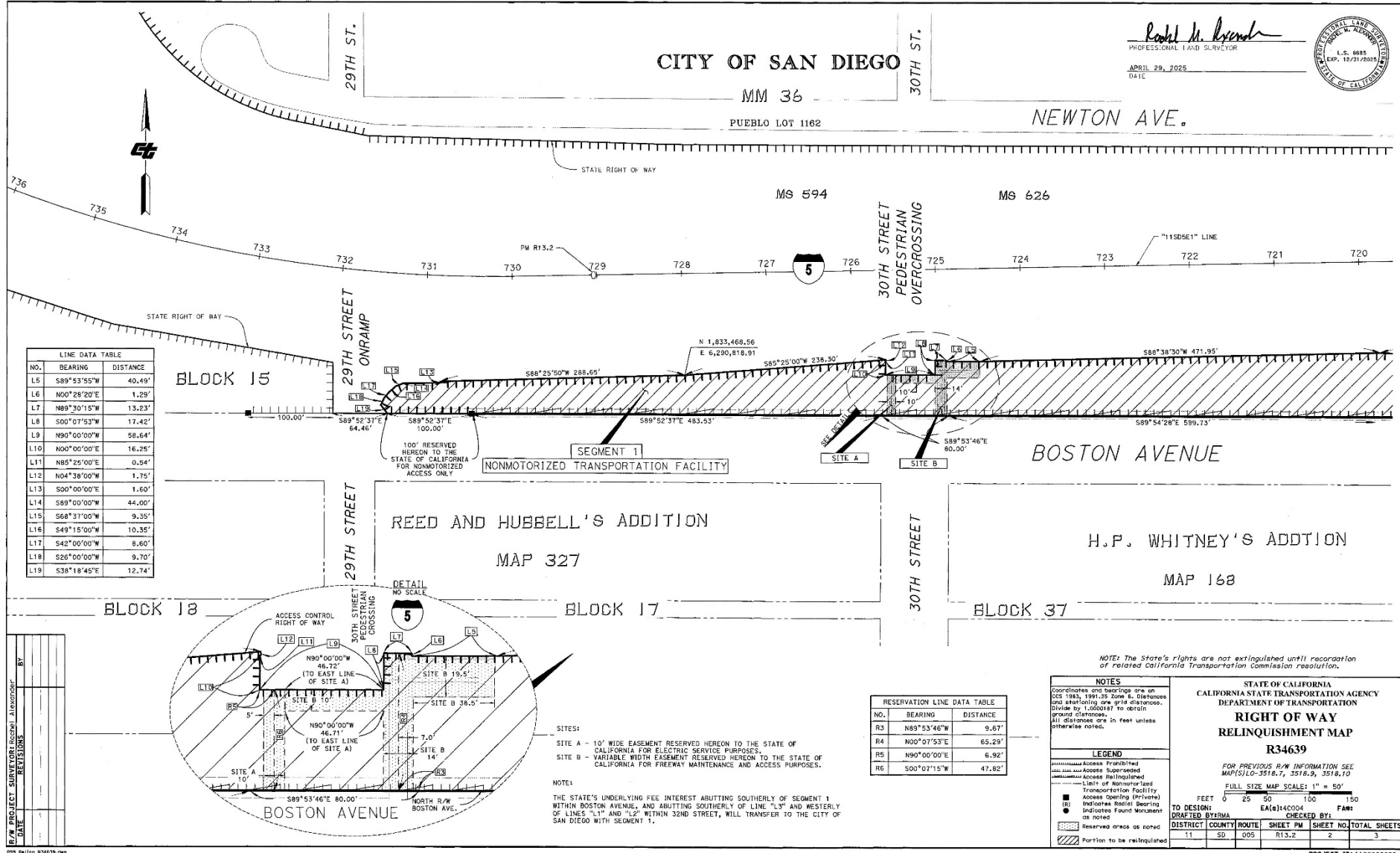
CITY OF SAN DIEGO

MM 36

PUEBLO LOT 1162

NEWTON AVE.

*Robert M. Lynch*  
 PROFESSIONAL LAND SURVEYOR  
 APRIL 29, 2025  
 DATE



R/W PROJECT SUBMITTER: [redacted]  
 DATE: [redacted]  
 BY: [redacted]

NOTE: The State's rights are not extinguished until recodation of related California Transportation Commission resolution.

**NOTES**  
 Coordinates and bearings are as of 1983, 1991, 2011 Zone 10. Distances and stationing are grid distances. Divide by 1,000.00 to obtain ground distances. All distances are in feet unless otherwise noted.

**LEGEND**

- Access Prohibited
- Access Superseeded
- Access Established
- Line of Nonmotorized Transportation Facility
- Access opening (Private)
- Indicates initial bearing
- Indicates found monument or noted
- Reserved areas as noted
- Portion to be relinquished

**STATE OF CALIFORNIA  
 DEPARTMENT OF TRANSPORTATION  
 RIGHT OF WAY  
 RELINQUISHMENT MAP  
 R34639**

FOR PREVIOUS R/W INFORMATION SEE MAP(S) LO-3518.7, 3518.9, 3518.10

FULL SIZE MAP SCALE: 1" = 50'

FEET 0 25 50 100 150

TO DESIGN: EA(a)40004  
 CHECKED BY: FAW

DISTRICT COUNTY ROUTE SHEET NO. TOTAL SHEETS  
 11 SD 005 R13.2 2 3

PROJECT ID: 112200099

9/16/2024 10:40:03 AM  
 P:\\_Client\112200099\Survey\CSO\_112200099\ME\WELLING

CITY OF SAN DIEGO

MM 36

PUEBLO LOT 1162

Rohit M. Bhandari  
PROFESSIONAL LAND SURVEYOR  
APRIL 29, 2025  
DATE



30TH ST.

31ST ST.

NEWTON AVE.

MM 36

PUEBLO LOT 1161

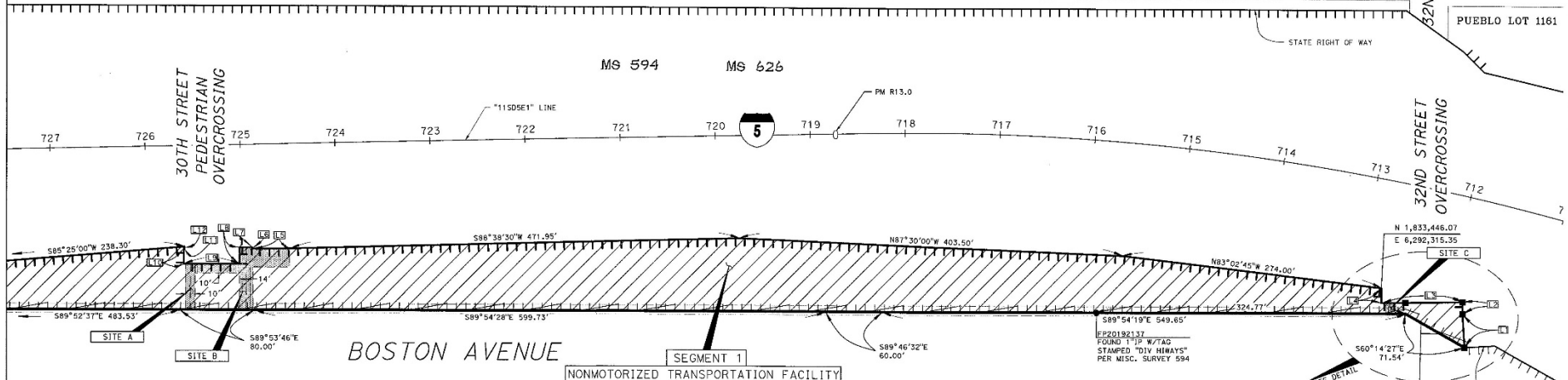
MS 594

MS 626



32ND ST  
OVERCROSSING

30TH STREET  
PEDESTRIAN  
OVERCROSSING



NO.	BEARING	DISTANCE
R1	N89°54'19"W	15.41'
R2	N00°00'00"E	11.36'

MAP 163

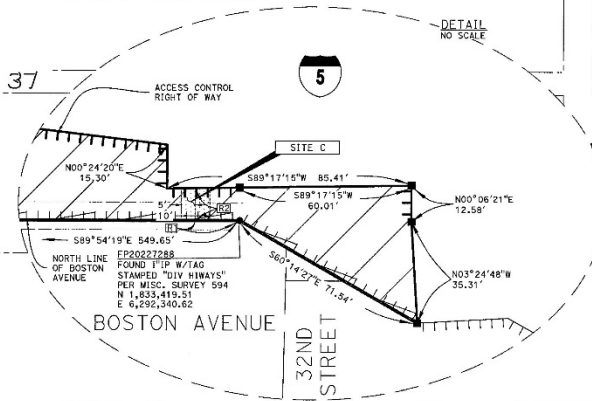
PORTION  
PUEBLO LOT  
1161  
MISC.  
MAP 36

H.P. WHITNEY'S ADDITION

BLOCK 37

BLOCK 36

NO.	BEARING	DISTANCE
L1	N03°24'48"W	35.31'
L2	N00°06'21"E	12.58'
L3	S89°17'15"W	85.41'
L4	N00°24'20"E	15.30'
L5	S89°53'55"W	40.49'
L6	N00°28'20"E	1.29'
L7	N89°30'15"W	13.23'
L8	S00°07'53"W	17.42'
L9	N90°00'00"W	58.64'
L10	N00°00'00"E	16.25'
L11	N89°25'00"E	0.54'
L12	N04°38'00"W	1.75'



- SITES:
- SITE A - 10' WIDE EASEMENT RESERVED HEREON TO THE STATE OF CALIFORNIA FOR ELECTRIC SERVICE PURPOSES.
  - SITE B - VARIABLE WIDTH EASEMENT RESERVED HEREON TO THE STATE OF CALIFORNIA FOR FREIGHT MAINTENANCE AND ACCESS PURPOSES.
  - SITE C - 10' WIDE EASEMENT RESERVED HEREON TO THE STATE OF CALIFORNIA FOR IRRIGATION WATERLINE PURPOSES.

NOTE:  
THE STATE'S UNDERLYING FEE INTEREST ABUTTING SOUTHERLY OF SEGMENT 1 WITHIN BOSTON AVENUE, AND ABUTTING SOUTHERLY OF LINE "L3" AND WESTERLY OF LINES "L1" AND "L2" WITHIN 32ND STREET, WILL TRANSFER TO THE CITY OF SAN DIEGO WITH SEGMENT 1.

NOTE: The State's rights are not extinguished until recodation of related California Transportation Commission resolution.

LEGEND	
	Access Prohibited
	Access Suffered
	Access Relinquished
	Right of Way
	Nonmotorized Transportation Facility
	Access Opening (Private)
	Indicates Radial Bearing
	Indicates Found Monument
	Reserved areas as noted
	Portion to be Relinquished

STATE OF CALIFORNIA  
CALIFORNIA STATE TRANSPORTATION AGENCY  
DEPARTMENT OF TRANSPORTATION  
**RIGHT OF WAY  
RELINQUISHMENT MAP**  
R34639  
FOR PREVIOUS R/W INFORMATION SEE  
MAP(S) LO-3518.7, 3518.9, 3518.10  
FULL SIZE MAP SCALE: 1" = 50'

TO DESIGN	EA(6)4C004	FAM#
DISTRICT	SD	DOS
COUNTY/ROUTE	R12,9	SHEET NO./TOTAL SHEETS
SHEET PM	3	3

PROJECT SURVEYOR: Rohit M. Bhandari  
DATE: APRIL 29, 2025

09L\_NetPlan\_R34639.dwg  
PA\_C:\arcgis\1122000099\Surveys\372\_1122000099\VME\360