

Progress Report on Interagency Coordination

CTC, CARB, and HCD Joint Meeting

April 10, 2025

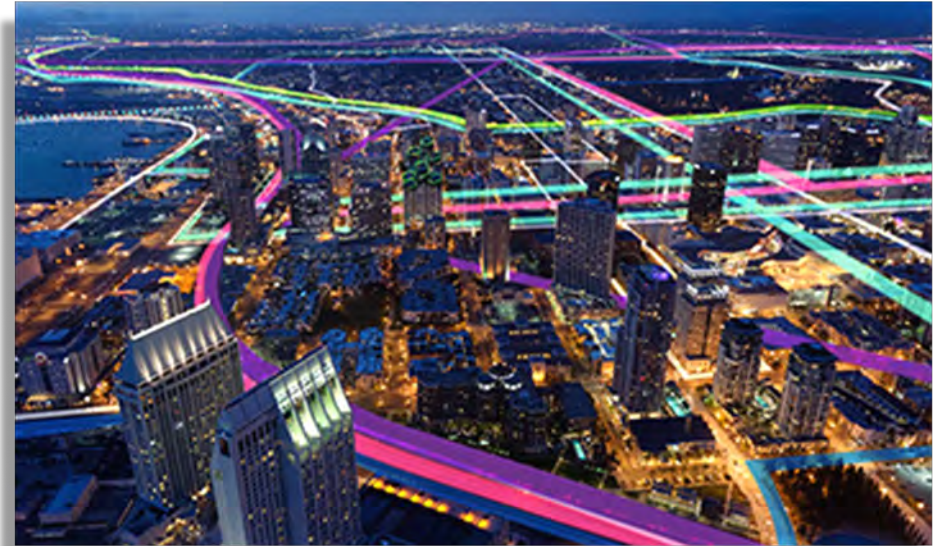




11/7/24 Meeting Recap

State Initiatives to Align Climate, Housing, and Transportation

- Senate Bill 150 Dashboard Metrics Update
- Climate Action Plan for Transportation Infrastructure Update
- Regional Early Action Planning Grants (2.0) Implementation



Aligning State Climate, Housing, and Transportation Policy



- Presentations covered planning efforts to achieve State policy goals, including:
 - CARB reporting and progress related to the Sustainable Communities and Climate Protection Act (SB 375) implementation
 - Updating CAPTI to further reduce GHG emissions
 - Regional Early Action Program updates to accelerate infill housing development & enhance affordability

CTC/CARB/HCD Coordination Updates

Los Angeles County Wildfires



Los Angeles County Wildfires



Los Angeles County Wildfires – Interagency Response

- Coordinated recovery efforts across transportation, housing, and climate sectors.
- Leveraging grant funds to streamline public access to resources.



Los Angeles County Wildfires – Interagency Response

Air monitoring, public outreach & cross-agency coordination:

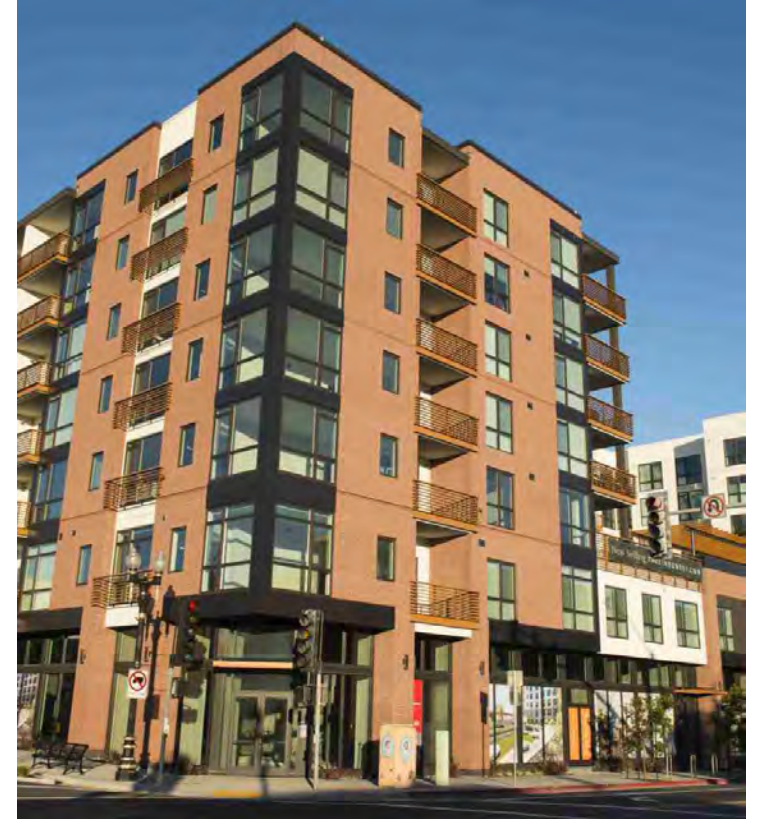
- Working with the South Coast Air Quality Management District to support coordination and monitoring efforts
- Supporting the work of UCLA, UC Davis, and NASA's Jet Propulsion Laboratory to monitor and study air quality impacts
- Hosted a public webinar in February, including local and federal agencies, to provide the public with air quality information
- Launched a new webpage dedicated to informing the public of the LA fires' air quality impacts

Enforcement:

- Eased truck emissions requirements during emergency declarations to ensure quick recovery efforts
- Eased restrictions on portable generators to help manufacturers meet increased demand

Executive Order - N-2-24

- (4) **Aligning Infill Housing Development with State Climate Policies**
 - (b) The California Air Resources Board, in partnership with BCSH and SGC, shall, by December 31, 2025, develop and propose metrics to assess the climate and environmental benefits of infill housing development, in order to help decisionmakers more accurately assess relative costs and benefits of infill development and adaptive reuse opportunities as remote work continues to be a part of the broader economy and travel patterns adjust.



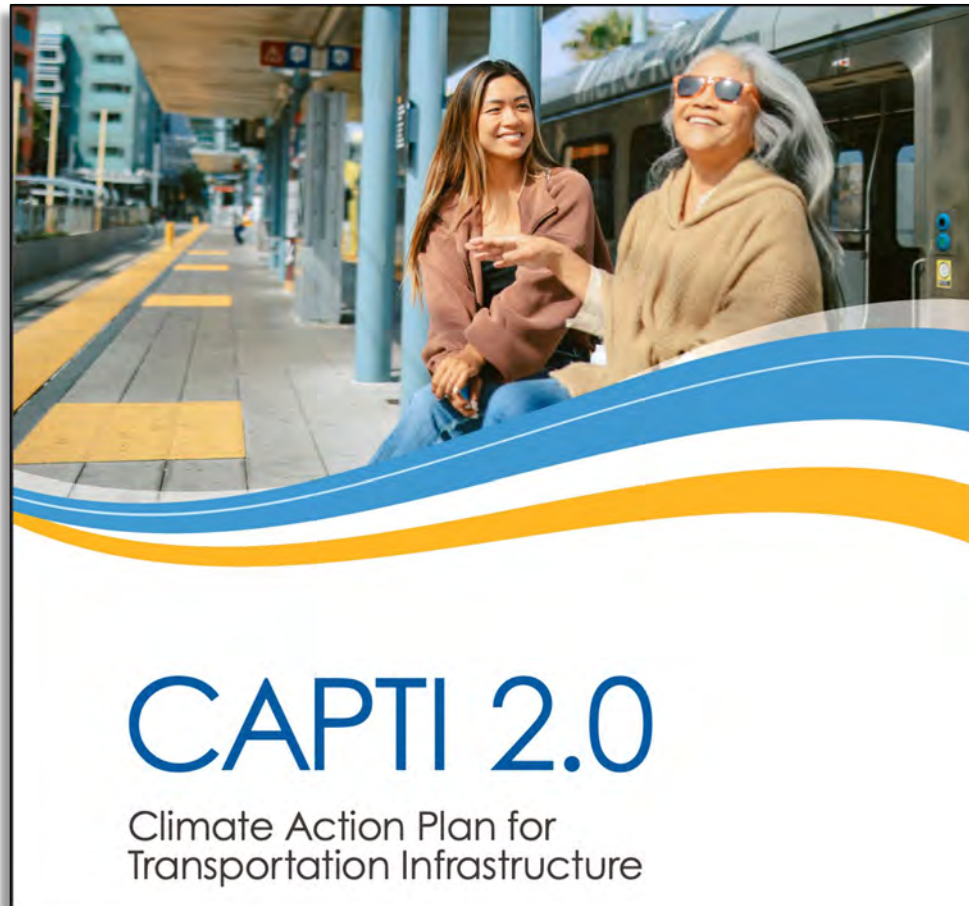
Executive Order - N-2-24

Status

- Assessing related literature, programs, and tools
- Planning for Spring engagement with key partners
- Due to the Governor by end of 2025



New CAPTI Actions



- CAPTI 2.0 was released by CalSTA in February 2025 after a year of comprehensive stakeholder engagement.
- Four new strategies and fourteen new actions help to further advance climate action policy implementation by the end of 2026.
- Updates include actions that further support VMT reductions in the Solutions for Congested Corridors Program and Trade Corridor Enhancement Program.

Thank you

