

B. Capital Region Freight Improvement

TCEP Cycle 2 Project Fact Sheet



ABOUT THE PROJECT

Over 400 million tons of freight worth more than \$1 trillion moves through the Northern California Megaregion. With trucking accounting for most of this freight movement, Interstate 5 and Interstate 80 are essential to California's economy. The Sacramento Region is the crossroads of these strategic interregional corridors and is a key link in interstate connections to Oakland and Stockton's ports. Growing congestion at two freight bottlenecks on I-5 and I-80 threatens the long-term viability of these interregional connections. By making three strategic improvements, the Capital Region Freight Improvement Project will improve travel time reliability, promote intermodal connections, and reduce congestion. Developed as a regional partnership, this project is an unprecedented opportunity for the State to improve the freight system of an entire region.

Nominating Agencies

Caltrans District 3
Sacramento Area Council of Governments
Placer County Transportation Planning Agency

Funding

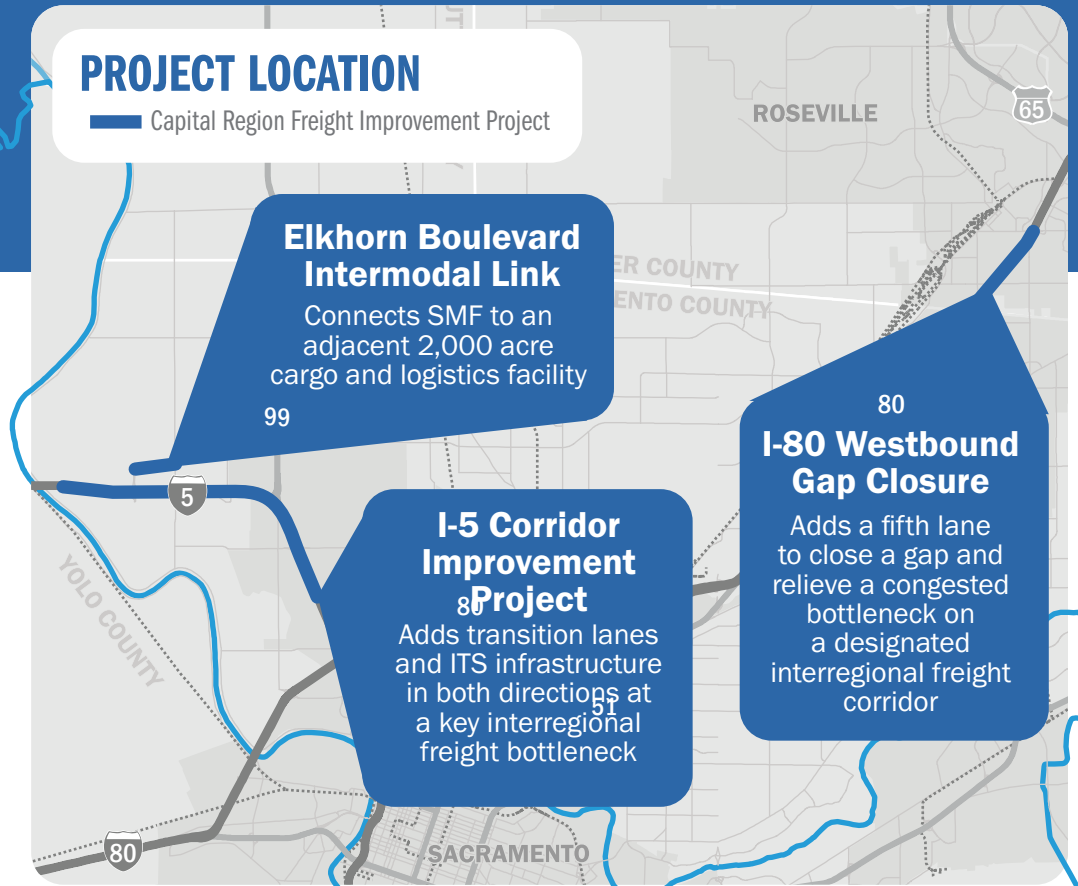
Total Cost: \$86 million
TCEP Regional: \$37.8 million
TCEP State: \$25.2 million
Local Match: \$23.0 million (36.5%)

Schedule

Environmental (PAED): Complete April 2021
Final Design (PS&E): Complete April 2022
Right of Way (ROW): Complete March 2022
Construction (CON): Complete December 2024

PROJECT LOCATION

Capital Region Freight Improvement Project



Elkhorn Boulevard Intermodal Link

Connects SMF to an adjacent 2,000 acre cargo and logistics facility

99

I-5 Corridor Improvement Project

Adds transition lanes and ITS infrastructure in both directions at a key interregional freight bottleneck

I-80 Westbound Gap Closure

Adds a fifth lane to close a gap and relieve a congested bottleneck on a designated interregional freight corridor

EXISTING CONDITIONS

THROUGHPUT



Interstate 5 and Interstate 80 are the Sacramento Region's busiest freight corridors and are home to two of FHWA's top US Highway Bottlenecks.

TIME RELIABILITY



Speeds on I-5 and I-80 drop below 30 mph, making it impossible for port-bound freight to predict travel through the Sacramento Region.

SAFETY



The bottlenecks on I-5 and I-80 contributed to 923 collisions, 483 of which involved injuries or fatalities in the past 5 years.

PROJECT BENEFITS



The project's improvements allow I-80 and I-5 to accommodate 1 million more trucks every year.



The project will cut the difference between peak and off-peak travel times by 40 percent.



The project's safety improvements will reduce the rate of fatalities per 100 million VMT by 20 percent.