

State Route 99/ Caldwell Ave Interchange, Safety, and Multi-Modal Project

LOCATION

West Central Tulare County
(southwest of the City of Visalia)
where Caldwell Avenue (Avenue
280) crosses over State Route 99

AT A GLANCE

PROJECT COST: \$68.2 Million

FUNDING:

Environmental and Design:
\$8 Million (Local, Regional, and
State Funds)

Right-of-Way:
\$4.6 Million (State Funds)

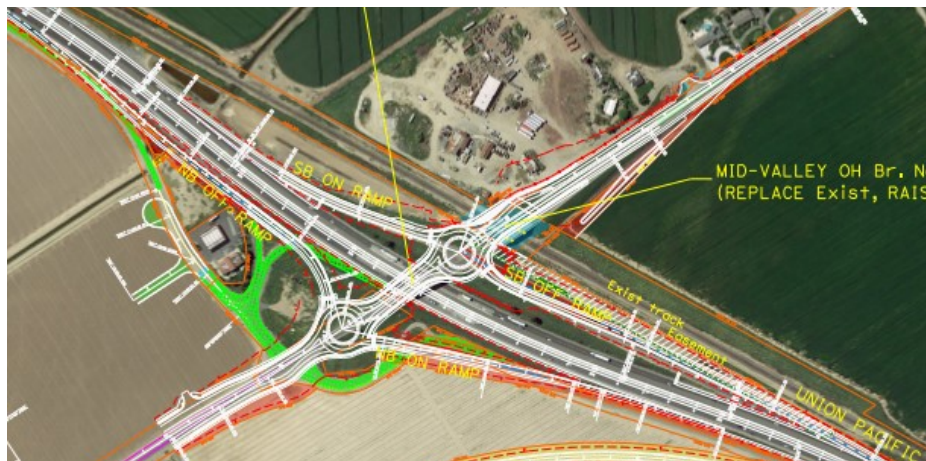
Construction:
\$55.6 Million (Regional, State, and
Federal Funds)

WEBSITE: <https://tularecog.org/tcag/programs-funding/2022-local-partnership-program-application-for-the-sr99caldwell-avenue-interchange-safety-and-multi-modal-project/>



Tulare County Association of
Governments
210 N. Church Street, Suite B
Visalia, CA 93291
559.623.0450
www.tularecog.org

In partnership with:



PROJECT OVERVIEW

The project would replace a substandard stop-controlled interchange with two roundabouts and a new bridge with bike lanes and sidewalks to allow access across SR-99 which currently does not exist. The bike and pedestrian improvements would connect to an existing class IV trail to the east. These improvements will provide for safer and improved access to important development projects that will be located at the interchange such as a regional children's health care clinic, outpatient surgery center and large commercial projects. This project in combination to the SR99/Tagus project to the south will allow for new regional and local transit accessibility and connections.

PROJECT STATUS AND SCHEDULE

The environmental analysis was completed 7/10/19. Project design and ROW certification are expected to be completed by March 2023 with construction beginning in August 2023.

OUTPUTS AND OUTCOMES

OUTPUTS

- 0.8 Miles of Auxiliary Lanes
- 1.1 Miles of Bicycle Lanes
- 0.9 Miles of Sidewalk
- 22 New Curb Ramps
- 2 Freeway Ramp Meters
- 2 Traffic Census Stations
- 1 Closed Circuit Television Camera
- 4 Ramp Modifications
- 3,510 Linear Feet of Culverts
- 2 Roundabouts

OUTCOMES

- Congestion Reduction
- Safety Enhancements
- Emissions Reductions
- Multimodal Connectivity
- Economic Development
- Significant VMT reduction for healthcare access
- Benefit/Cost Ratio: 1.34

GREENHOUSE GAS EMISSIONS

To address greenhouse gas emissions, the project is being designed with the following improvements and measures:

- Construction of roundabouts at the ramp intersections with Caldwell Avenue to improve traffic flow and reduce queuing at the existing ramp-end intersections.
- Inclusion of pedestrian and bike facilities to encourage use of non-motorized transportation.
- A traffic management plan will be prepared by Caltrans to efficiently manage traffic during construction
- Use of LED energy-efficient lighting and traffic signals
- Conformance with all local Air Pollution Control District rules, ordinances, and regulations for air quality restrictions to reduce greenhouse gas emissions.
- Planting of trees and shrubs with native and drought-tolerant varieties in ratios that replace air quality and cooling benefits of vegetation removed by project construction.



By 2043, the project will result in in a decrease of approximately 22,000 Metric Tons per year of CO₂ emissions.

COMMUNITY ENGAGEMENT AND TRANSPORTATION EQUITY

Community engagement and transportation equity were taken into serious consideration during the planning and design phases of this project. Highlighted aspects of this include:

- Project identified in 2001 as a regional need and included in and approved by the voters in Measure R in 2006
- Significant public outreach conducted via telephone, mail, and in-person surveys and numerous public meetings at city councils, county Board of Supervisors
- Widespread noticing in English and Spanish of an open house/public hearing held in December 2018 to discuss the environmental document and project options
- Caltrans held numerous meetings with Visalia City Council and Tulare County Board of Supervisors to discuss project options.
- This is a regionally significant project that is partially located within and will benefit disadvantaged communities
- The project will have no negative impact on existing or future residential neighborhoods.
- The project will improve economic development and access to healthcare in an economically disadvantaged region.

