



## Fact Sheet

### 2024 State Transportation Improvement Program (STIP)

The 6.4 mile SR-4 Wagon Trail Realignment Project, located between the community of Copperopolis and the City of Angels Camp, has been Calaveras COG's highest priority for the past five STIP cycles and the recipient of new STIP funding capacity. In total, the Calaveras COG Board has programmed approximately \$15.5 million in STIP funding to it, reaffirming the project's priority and the region's commitment to its completion.



**SR 4 CONNECTING SAN FRANCISCO BAY TO THE SIERRA NEVADA**

The current non-engineered roadway literally follows the 1840s wagon trail between the San Joaquin Valley and the gold country. It climbs, descends and curves through rolling foothill topography. It lacks shoulders and recovery areas and risks traveler safety with deficient sight distances. Construction of the project will eliminate a truck advisory on SR-4 between the county's only incorporated city, Angels Camp, and SR-99, I-5 and the Port of Stockton. This advisory currently limits truck trailers to under 30 feet in length. Trucks over that length travel out of direction to access Angels Camp and the forestry-related business in the high Sierras along SR-4. One goal of the project partners is for SR-4 to be a continuous Terminal Access (STAA) Route between the Central Valley and Calaveras and Alpine counties to promote economic development.

The project is being delivered in three segments. The Western Segment is under construction and scheduled to be completed in 2024. It is approximately 3.0 miles in length. The Middle Segment will replace the bridge over Nassau Creek between Appaloosa Way and Stallion Way. Construction is under way and is scheduled to be completed in 2024. The 3.4 mile Eastern Segment is in design and is scheduled to start construction in 2027. Construction is expected to take two years to complete. The total estimated cost of the three project segments is \$97.3 million.



For the 2024 STIP funding cycle, Calaveras COG is applying \$1.042 million in new funding to the construction of the Eastern Segment in FY 27/28. Planning, Programming and Monitoring will receive \$75,000 in funding in new funding over FYs 27/28 and 28/29.

The project is a partnership between Calaveras COG, Caltrans and the Calaveras County. Calaveras County is the lead agency for design, right of way and construction.



The Wagon Trail project will advance the following regional and state goals:



**Improve Safety:** Realigning the geometrically deficient segment of SR-4 between Copperopolis and Angels Camp will reduce accidents and relieve current and future traffic congestion.

**Improve State of Good Repair:** The reconstruction of the non-engineered roadway structural section will address existing safety issues such as unsafe roadway surfaces.

**Enhance Economic Competitiveness:** This project will facilitate economic development of the surrounding communities by eliminating an STAA truck advisory. SR-4 is a major access route for freight trucks moving goods to and from the Port of Stockton. SR-4 is also a major access route for tourists who travel into the Sierras for special events and seasonal recreational activities.

**Enhance Environmental Sustainability:** The project will improve environmental sustainability by providing bridges and culverts into the design to increase space for wildlife connectivity throughout the three wildlife corridors, located within the project site.

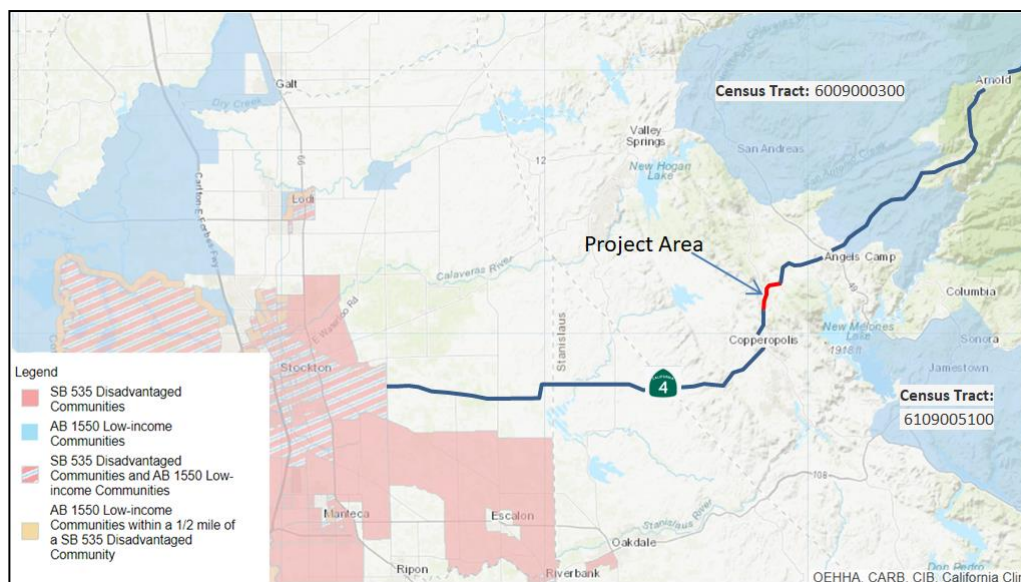
**Improve Transit Efficiency and Bicycle & Pedestrian Mode Split:**

The project will facilitate transit service effectiveness and ridership in the corridor. These transit benefits, combined with the construction of shoulders should increase walking and bicycling options and reduce reliance on the automobile as the predominate mode of travel in the county.



**Supports Access to Jobs for Disadvantaged Communities:**

Median household income throughout Calaveras County has historically tracked below the state average. Within the county are five census tracts comprising designated AB 1550 Low income Communities. The



project will assist disadvantaged working families commuting to Stockton, Modesto and other San Joaquin Valley cities by improving the safety of their commute and reducing the accident delays and related detours they endure as they try to stretch their below-state average incomes by working in the Valley and living in the foothills.