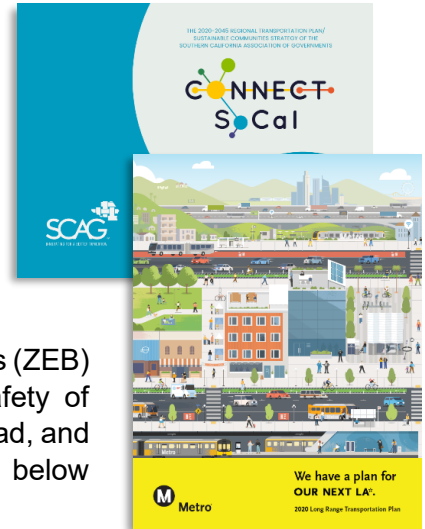


2024 Regional Transportation Improvement Program (RTIP) Fact Sheet for Los Angeles County

Executive Summary

The primary purpose of the Los Angeles County RTIP is to help implement Metro's *2020 Long Range Transportation Plan (L RTP)* and the Southern California Association of Governments' (SCAG) *2020 Regional Transportation Plan/Sustainable Communities Strategy (RTP/SCS)*. The L RTP provides a detailed roadmap for how Metro will plan, build, operate, maintain, and partner for improved mobility in Los Angeles County in the next 30 years. The funding plan and policies included in the L RTP help advance the long-range transportation plan for the six-county SCAG region envisioned in the RTP/SCS.

For the 2024 RTIP, Los Angeles County's top priority is a new zero-emission bus (ZEB) acquisition project which will increase the sustainability, resilience, and safety of Metro's bus fleet. The 2024 RTIP also carries over and amends transit, local road, and highway projects that were programmed in previous RTIPs. The table below summarizes the 2024 RTIP for Los Angeles County.



2024 RTIP for Los Angeles County (\$000s)

Proposed Programming	Prior	FY 25	FY 26	FY 27	FY 28	FY 29	Total
No Amendments							
SR 71 (North Segment)	20,000						20,000
SR 138 Segment 13	75,100						75,100
Planning, Programming & Monitoring	2,836	3,425	3,342	3,342			12,945
East San Fernando Valley Transit Corridor Project	202,139						202,139
Buses Project #2		40,749					40,749
Subtotal No Amendments	300,075	44,174	3,342	3,342			350,933
Amendments to Schedule/Funding							
Multimodal Mobility Improvements (SR 138 Segment 4)	38,350		7,000				45,350
LA City Soto St. Complete Streets, Multnomah-Mission			26,330				26,330
LA County USC Medical Center Mobility Improvements			9,432	17,872			27,304
Subtotal Amendments	38,350		42,762	17,872			98,984
Proposed New Projects							
Bus Acquisition #3					200,633		200,633
Planning, Programming & Monitoring					8,630	4,270	12,900
Subtotal New Projects					209,263	4,270	213,533
NET NEW PROGRAMMING			2,267	1,017	209,263	4,270	216,817

Benefits

The RTIP for Los Angeles County contributes to SCAG region-level benefits to travel time savings and reliability; cost savings in vehicle operations, accidents, and emissions; journey quality, safety; health; and emissions reductions. The SCAG region will see benefits outweigh costs at a ratio of 4.9. This analysis does not include the new proposed ZEB project which will acquire 100 ZEBs.

Metro's vehicle fleet accounts for 80 percent of its total energy consumption per year. Reducing criteria air pollutant emissions is critical to protecting public health and reducing air pollution. Metro has already begun transition to a ZEB fleet. As part of this initiative, the proposed project is not only increasing the operating life of

existing buses, but more importantly, will reduce NOx and PM emissions from Metro's bus fleet. Metro estimates saving \$6 million in tail pipe emissions because of the project.

Goals and Objectives

Alignment with regional goals and objectives. The 2024 RTIP is modally balanced to advance the RTP/SCS Core Vision of maintaining and better managing the existing transportation network while expanding mobility choices by locating housing, jobs, and transit closer together and increasing investment in transit and complete streets. The four Priority Areas identified in the LRTP: *Better Transit*, *Less Congestion*, *Complete Streets*, and *Access to Opportunity* align with RTP/SCS strategies to advance the Core Vision. Embedded in all Priority Areas are equity and sustainability, which are outlined in Metro's [Equity Plan](#) and [Moving Beyond Sustainability Plan](#). The table below indicates the Priority Areas supported by each project.

	2024 RTIP Status	Better Transit	Less Congestion	Complete Streets	Access to Opportunity
SR 71 (North Segment)	Carryover				
SR 138 Segment 13	Carryover				
East San Fernando Valley Transit Corridor Project	Carryover				
Buses Project #2	Carryover				
Multimodal Mobility Improvements (SR 138 Segment 4)	Amend				
LA City Soto St. Complete Streets, Multnomah-Mission	Amend				
LA County USC Medical Center Mobility Improvements	Amend				
Bus Acquisition #3	New				
Planning, Programming, & Monitoring	New				

Alignment with state goals and objectives. Although adopted shortly before the Climate Action Plan for Transportation Infrastructure (CAPTI), the Metro LRTP is closely aligned with CAPTI in the holistic approach to investing in sustainable, equitable, and healthy modes of transportation to meet communities' diverse mobility needs. Metro's priority project for the 2024 RTIP, ZEB acquisition, as well as existing transit and complete streets projects are compliant with many of CAPTI's guiding principles: invest in networks of safe and accessible bicycle and pedestrian infrastructure, invest in ZEV infrastructure, reduce public health and economic harms and maximize community benefits, make safety improvements to reduce fatalities and severe injuries, and promote projects that do not significantly increase passenger vehicle travel. The RTIP includes highway expansion projects which have been in development for decades. The LRTP includes highway investments like these as one of many strategies to achieve less congestion. These projects also align with CAPTI which acknowledges that many highway expansion projects were conceived in the past, not all highway expansion projects serve the same purpose or have the same results, and context such as multimodal-inclusive design and rural vs. urbanized settings matter.

