

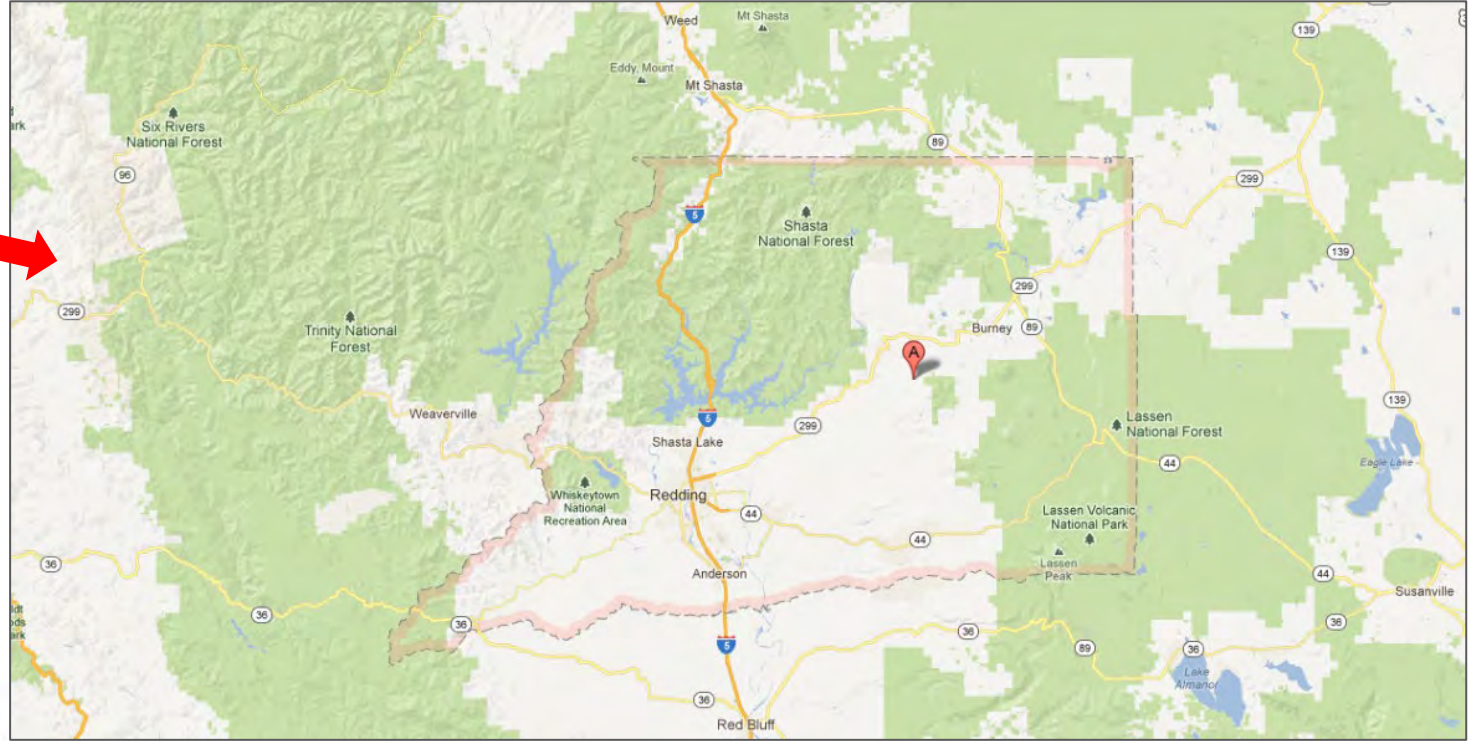
2026 Shasta Regional Transportation Improvement Program (RTIP) Presentation

California Transportation Commission – 2026 State Transportation Improvement Program Hearing – North

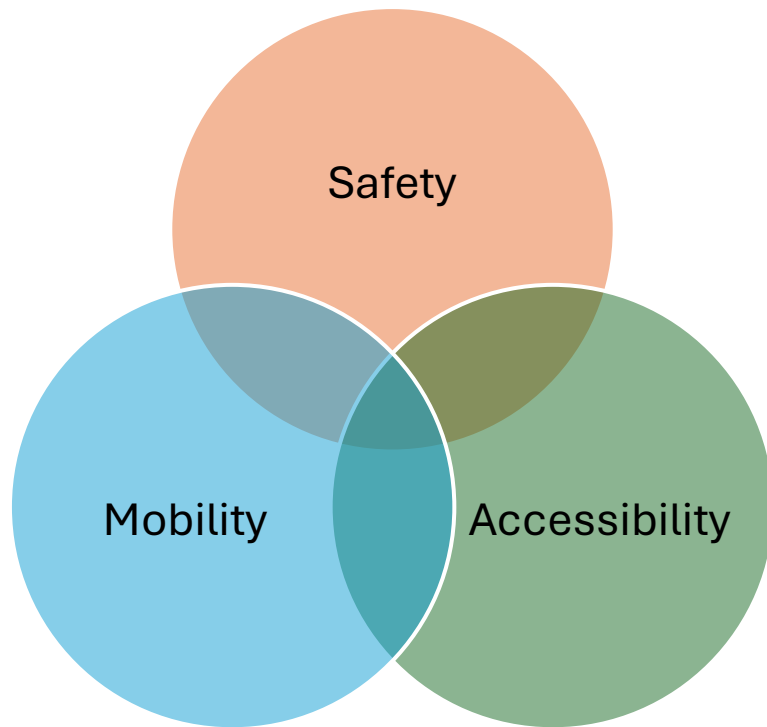
January 28, 2026



California
Transportation
Commission







- Select RTP Goals:

- **Goal #1:** Safe, efficient, and effective movement of people.
- **Goal #2:** Optimized interregional transportation system.
- **Goal #8:** Improved reliability, safety, efficiency, and resiliency of regionally significant roadways.
- **Goal #9:** Create people-centered communities that support public safety, health, and well-being.

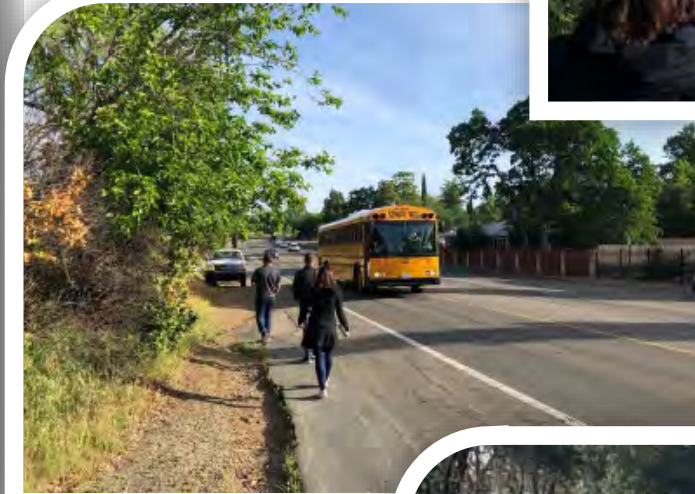
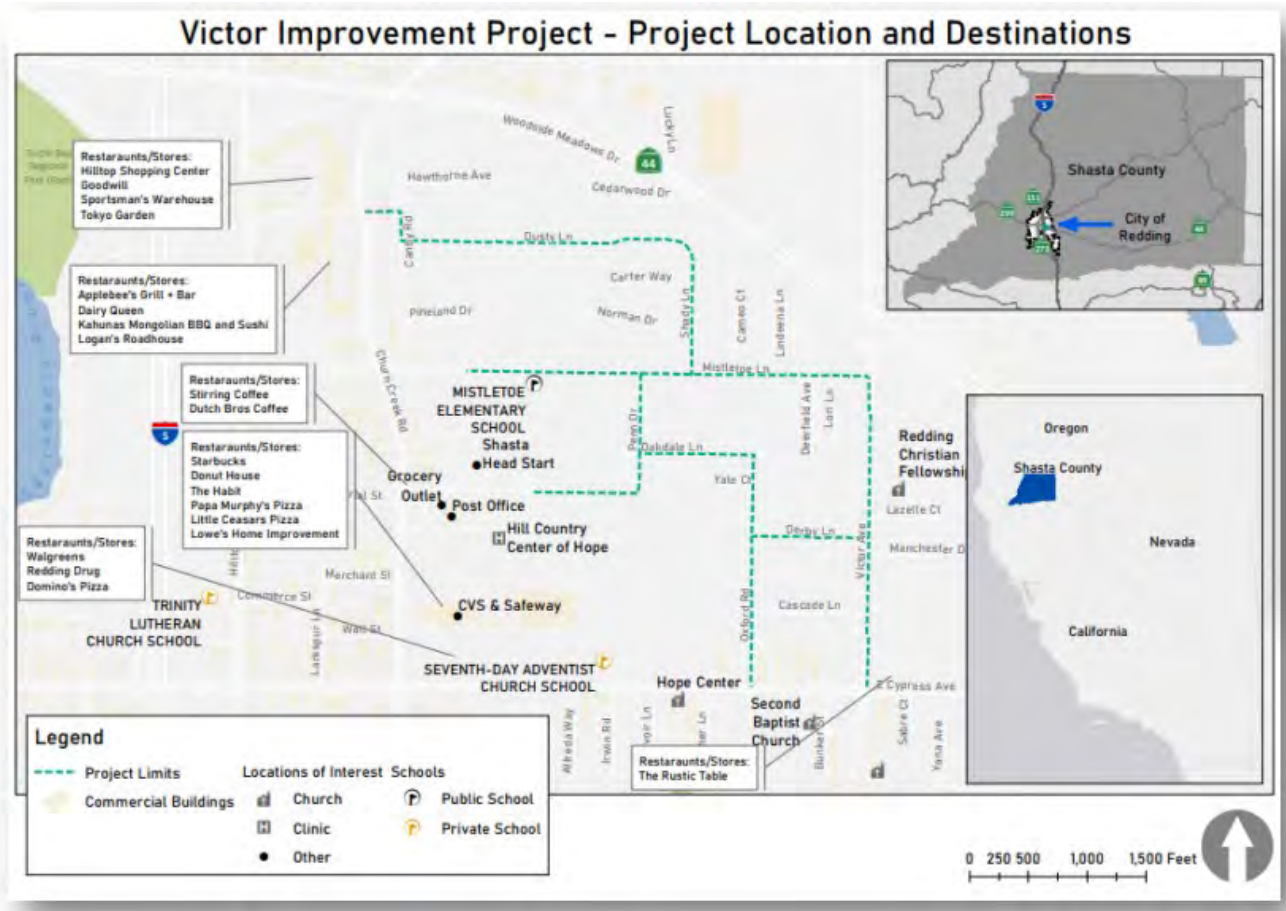
2026 Shasta STIP/RTIP Financial Summary

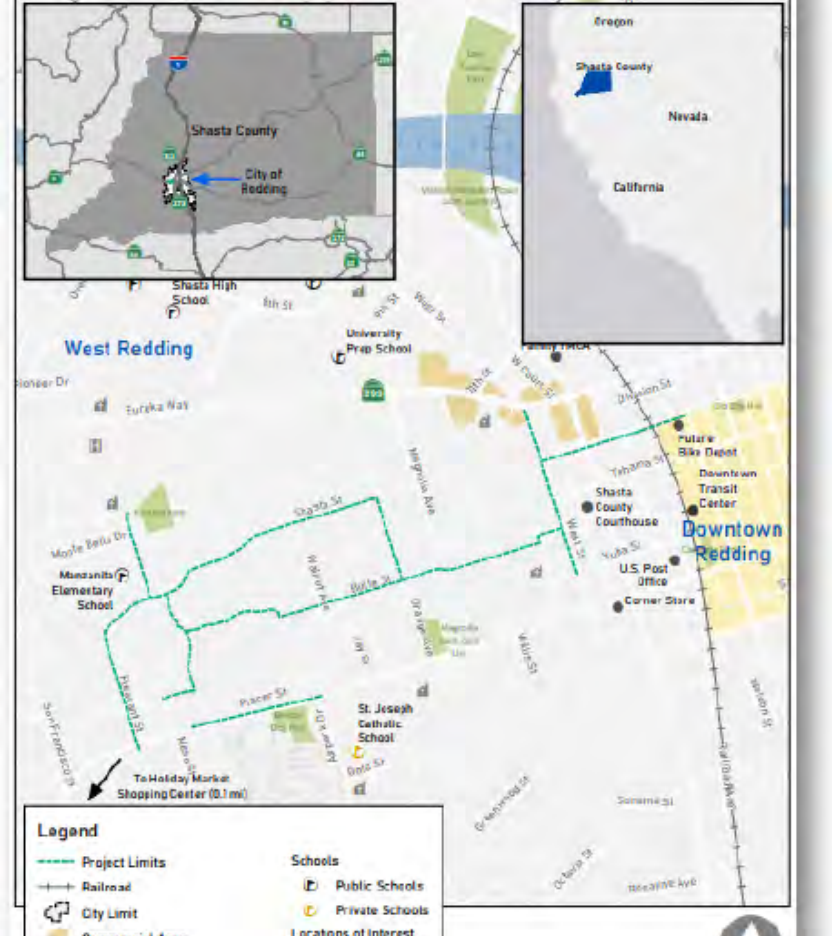
Prior STIP/RTIP \$ - 7.48 million

2026 STIP/RTIP \$ - 4.69 million

Federal, state, and local funds leveraged - \$150 million

Active Transportation: Victor Improvement Project





Active Transportation: Butte Street Boogie



Improvement Type	Victor	BSB
New bicycle/pedestrian facilities	2.5	3.77 miles
New sidewalks	1.66	1.09 miles
Intersection/signal improvements	1 location	1 location
Repair existing sidewalk	600 LF	1,500 LF
ADA – new curb ramps	66	74
Signage/lights	-	14 locations
New accessible pedestrian signals	7 units	6 units
ADA – Sidewalk repair/upgrade	-	6 locations
New Crosswalks	7	27

- ✓ 6.27 miles of active transportation improvements
- ✓ 2.75 new sidewalks
- ✓ 13 accessible pedestrian signals
- ✓ 34 new crosswalks
- ✓ 140 new ADA-compliant curb ramps
- ✓ 0.4 miles in repaired sidewalks

Freight Managed Lanes: Fix 5 Cascade Gateway



Fix 5 Cascade Gateway Improvements

Category	Outputs	Unit	Amount
Pavement	Roadway	Miles	5.3
Operational Improvement	Auxiliary Lanes	Miles	2.9
TMS	CCTV	EA	1
Operational Improvement	Slow Vehicle	Miles	14.2
TMS	Communications (Fiber Optic)	Miles	0.78
Bridge/Tunnel	Modified/Reconstruct	SQFT	119,522
Pavement	Mainline Shoulders	Miles	6.4

- ✓ 14.2 miles of freight managed lanes including:
 - 8.9 miles of converted general purpose lanes
 - 5.3 miles of new managed lanes
 - 2 freight ZEV chargers

Look Ahead – Regionally Significant Needs

Pit River Bridge



Look Ahead – Regionally Significant Needs

Regional Freight/Passenger Railroad Crossing Study



Thank you!

