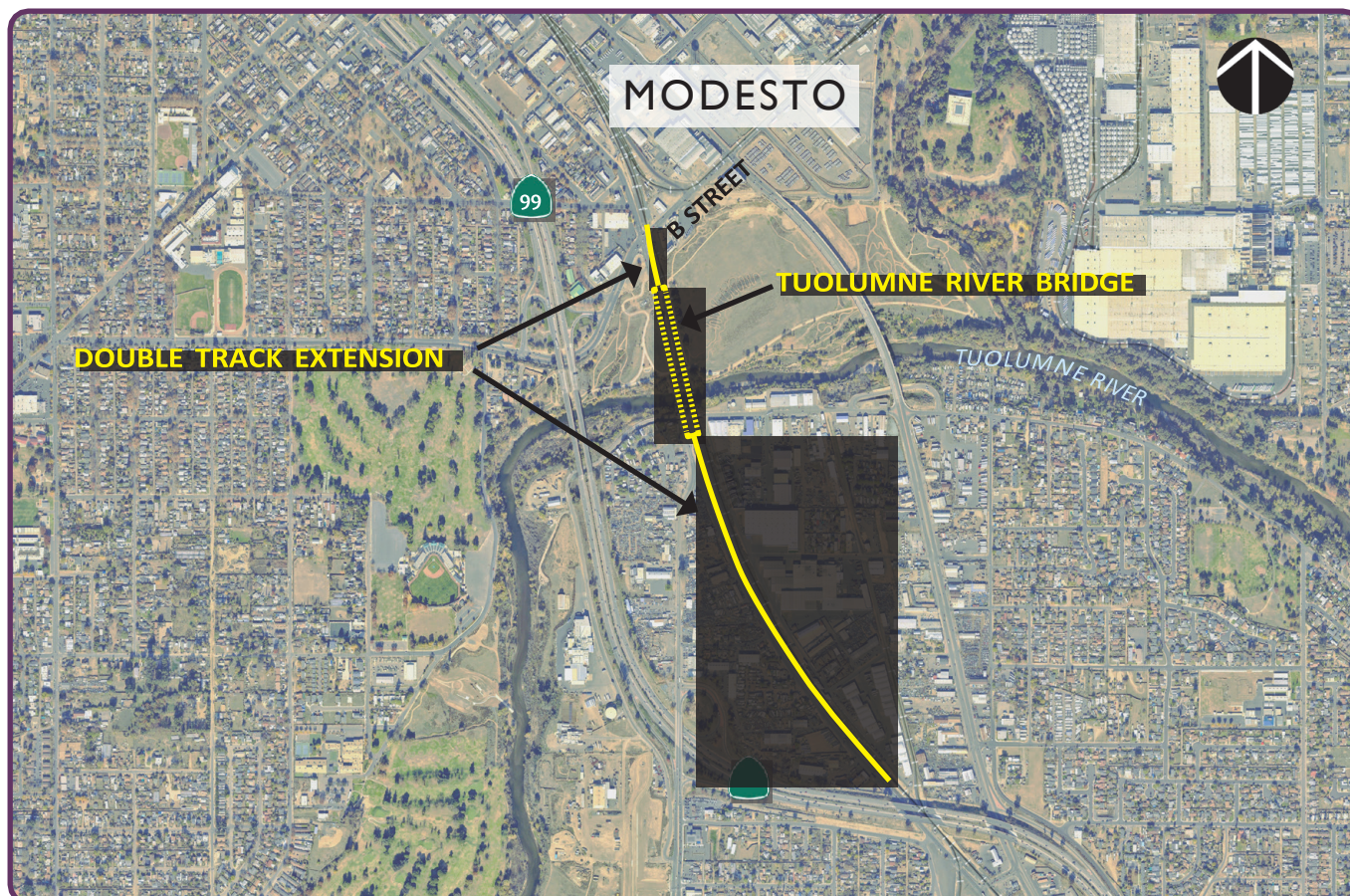


## TUOLUMNE RIVER BRIDGE AND TRACK EXTENSION



GRANT PROGRAM: 2024 Trade Corridor Enhancement Program (TCEP)

NOMINATING AGENCIES: California Department of Transportation (Caltrans) and San Joaquin Regional Rail Commission (SJRRC)



### SCOPE

The Tuolumne River Bridge and Track Extension (Project) will construct a new 1,270-foot bridge over the Tuolumne River adjacent to the existing Union Pacific Railroad (UPRR) Fresno Subdivision. The Project also adds 0.2 miles of associated second track extension that will tie directly into Ceres Train Station and Track Improvement project at the south and the Modesto Train Station and Track Improvement project to the North and modify the existing B Street at-grade highway-rail crossing. The Project is part of the multiple rail improvements to expand passenger rail service between the San Joaquin Valley, Sacramento region, and the Bay Area.

### COST

PS&E	\$7,168,000
Construction	\$52,002,000
<b>Total</b>	<b>\$59,170,000</b>

### SCHEDULE

	START	END
PA&ED	9/2017	8/2018
PS&E	2/2020	8/2026
ROW	11/2024	8/2026
CON	12/2026	5/2030

**TCEP REQUEST: \$54,674,000**

## ▶ TUOLUMNE RIVER BRIDGE AND TRACK EXTENSION *(continued)*

### ■ PROJECT BENEFITS

The Project will enhance goods movement between freight hubs in the Central Valley, Bay Area, and Southern California. By enhancing freight rail efficiency and increasing capacity, the Project will encourage mode shift from truck to rail. This will lower transport costs for businesses utilizing the corridor and increase productivity. The Project will also encourage passenger mode shift from State Route 99 to rail, significantly reducing vehicular emissions and improving air quality along the corridor and improve public health for disadvantaged and low-income communities. The Project will provide equitable access to commuter rail services in underserved neighborhoods in San Joaquin, Stanislaus, and Merced Counties.

### ■ OUTPUTS



1,270 Foot Bridge



0.2 Miles of Railroad Track



1 Highway-Rail Crossing Modification

### ■ OUTCOMES



Improve Goods Movement



Increase Freight Rail Throughput



Reduce Daily Vehicle Miles Traveled



Reduce Greenhouse Gas Emissions



Improve Air Quality



Existing UPRR Tuolumne River Bridge as seen from Seventh Street